

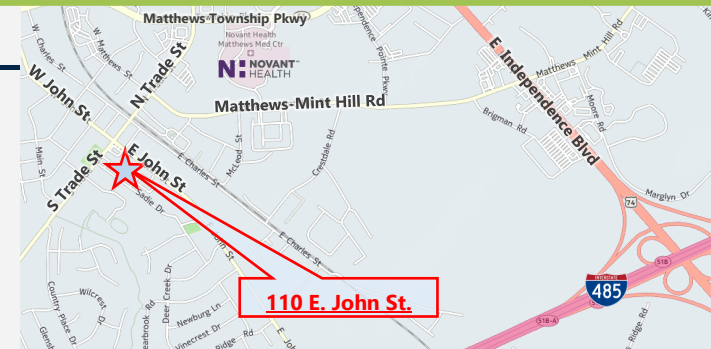
110 E. JOHN STREET

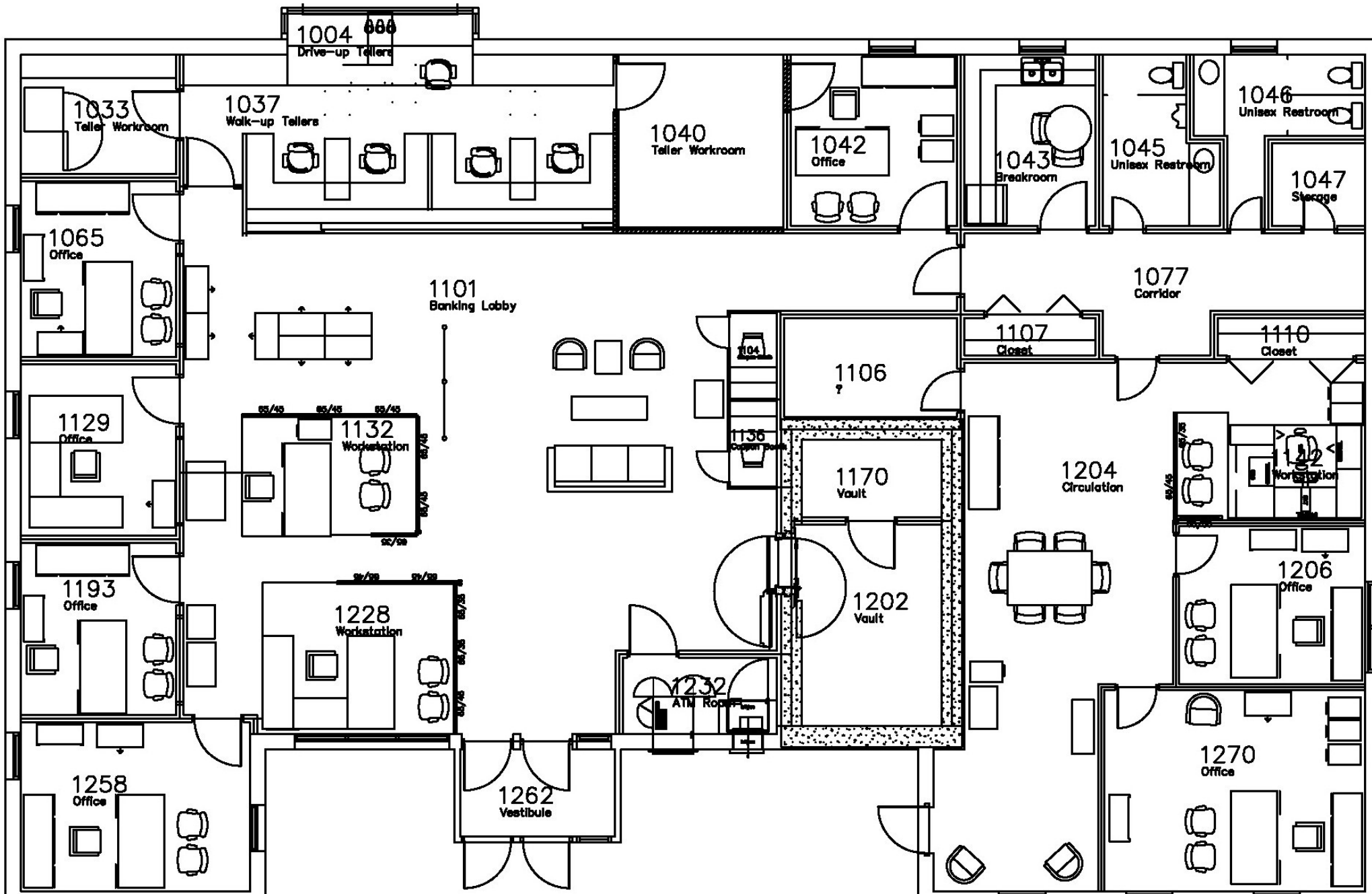
MATTHEWS, NORTH CAROLINA

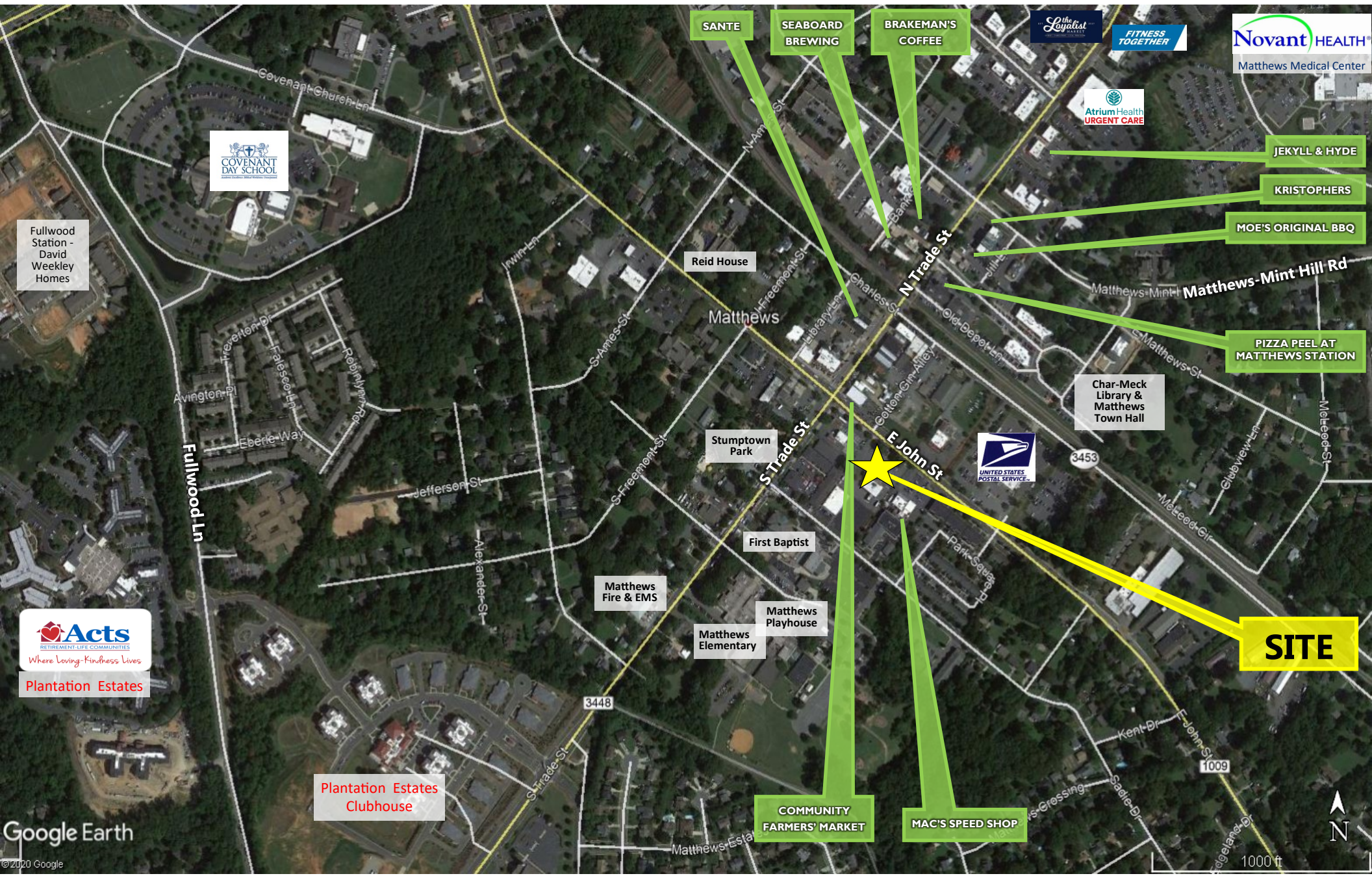


FREE-STANDING BANK BRANCH

- ◆ ± 4,700 SF ON 1.4 ACRES
- ◆ VAULT AND SAFE DEPOSIT BOXES IN PLACE AND AVAILABLE
- ◆ BACKLIT MONUMENT SIGNAGE AVAILABLE
- ◆ 3 DRIVE THROUGH LANES AND DRIVE UP ATM
- ◆ 13+ PARKING SPACES PER 1,000 SF
- ◆ DOWNTOWN MATTHEWS LOCATION, WALKABLE TO RESTAURANTS AND LOCAL SHOPPING
- ◆ CLOSE PROXIMITY TO HWY 51, US-74, I-485 AND NOVANT MEDICAL CENTER
- ◆ 3RD HIGHEST RANKED CHARLOTTE SUBURB ACCORDING TO THE CHARLOTTE AGENDA







Fullwood Station - David Weekley Homes

Acts Retirement Life Communities
Where Loving Kindness Lives
Plantation Estates

Plantation Estates Clubhouse

SANTE

SEABOARD BREWING

BRAKEMAN'S COFFEE

Reid House

Stumptown Park

First Baptist

Matthews Fire & EMS

Matthews Elementary

Matthews Playhouse

COMMUNITY FARMERS' MARKET

MAC'S SPEED SHOP

JEKYLL & HYDE

KRISTOPHERS

MOE'S ORIGINAL BBQ

PIZZA PEEL AT MATTHEWS STATION

Char-Meck Library & Matthews Town Hall



SITE



CULTURAL ARTS DISTRICT

HISTORIC DOWNTOWN

NORTH END



FOOD & BEVERAGE

Artisan Gelato	4	Mac's Speed Shop	11
Beantown Tavern	83	Ming Fu Chinese and Sushi	2
Black Chicken Wine Cellar	85	Moe's Original BBQ	58
Brakeman's Coffee & Supply	67	Pita Kabab Grill	76
Carolina Beer Temple	86	The Pizza Peel & Tap Room	50
Edible Art Cake Shop	82	Rocky Mountain Chocolate Factory	98
El Valle Mexican Restaurant	3	Royal Cafe & Creperie	88
The Exchange Pizza Depot	57	Sante	42
Grace O'Malley's Irish Public House	40	Seaboard Brewing Taproom Wine Bar	46
Great Harvest Bread Co.	55	Stumptown Station	39
The Herban Legend Food Stand	77	The Portrait Gallery Restaurant	62
Kristophers Sports Bar	59	Temple Mojo Growler Shop	45
Jekyll & Hyde Taphouse & Grill	92	Thai Taste	89
Jet's Pizza	100	Unami Sushi and Grill	95
The Loyalist Market	102	Which Wich	95

RETAIL SHOPS, SALONS & LEISURE

105 Cigar Co.	47	Kangaroo Express	9	Salon 131	87
AAA Collectibles	33	Karousel Kids	61	Sir Blake	30
A Perfect Fit Healthcare Uniforms	12	LAM Home Design	41	Standing Ovation Barber Shop	10
Axley Collision	96	Libby & Leaf	32	The Tippy Paintbrush	36
Backporch Treasures Thrift Boutique	38	Marketplace Vintage Keepers	91	Trade Street Jewelers	31
Black Cloud Tattoo and Piercing	35	Matthews Ballroom	43	Walgreens	97
Buffalo Jackson Trading Co.	34	Mojo Cycles	44	ZABS Place	69
Cutie Patootie Kids Spa	37	Nail 3 Spa & Skin Care	80		
Designs by Shirlee	1	Pappy's Cuts Barber Shop	101		
First Choice Medical Equip. & Supplies	48	Precious Restorations	5		
Foot Solutions	99	Providence Florist	65		
IN2 Nails	93	Renfrow Hardware	64		
JR Renditions Salon	90	Riz Salons	94		

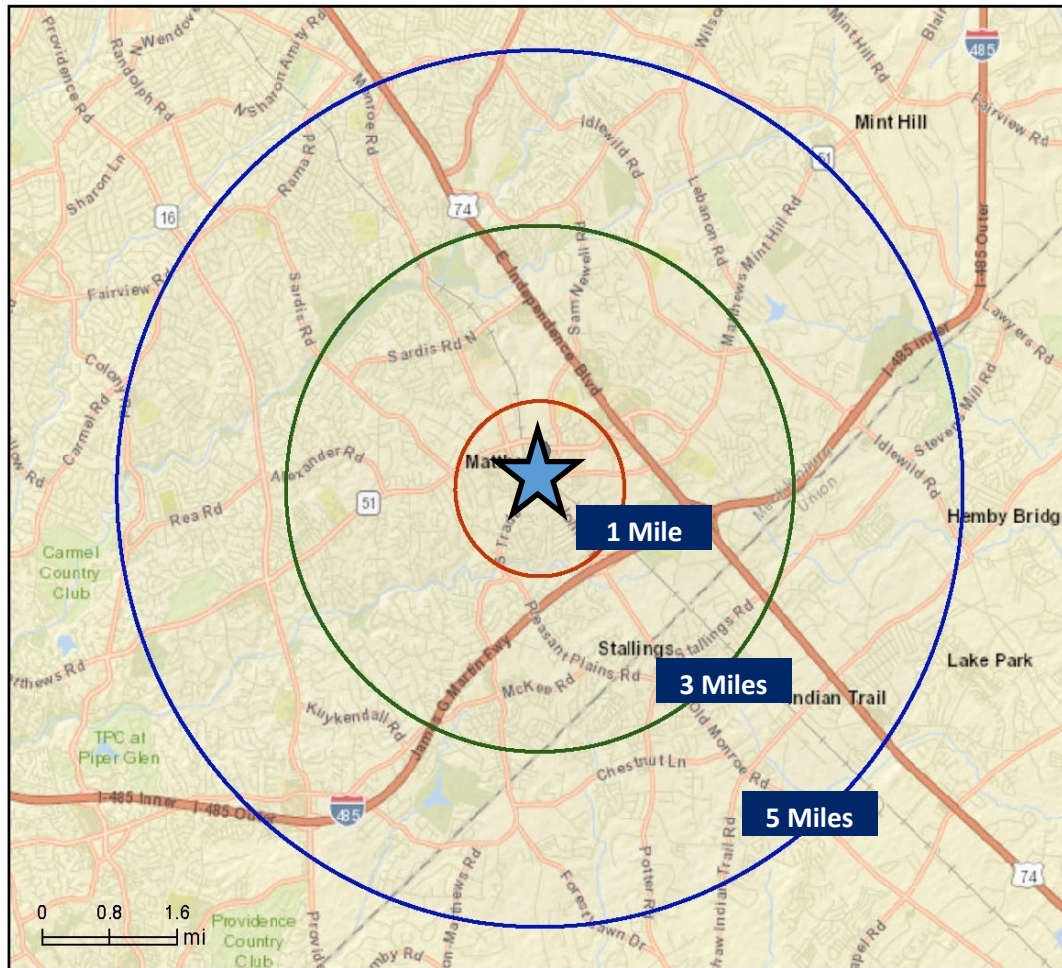
HERITAGE BUILDINGS

Benjamin Dewitt Funderburk House (c. 1895)	56	Matthews Post Office (c. 1939)	45
EJ Funderburk General Merchandise Store (c. 1878-1901)	42	Matthews Presbyterian Church (c. 1930)	25
Farmer's Market Building (c. 1925)	65	Matthews School (c. 1907)	24
Fire Station (c. 1930)	61	Morris/Phillips Barn (c. 1880)	54
Funderburk Bros. Blacksmith Shop & Grist Mill (c. 1890)	52	Nancy Reid House (c. 1890)	71
Funderburk Dry Goods Store (c. 1878-1901)	41	Orr Building (c. 1900)	43
Garland House (c. 1908)	67	Phillips House (c. 1924)	53
Heath and Reid Store (c. 1889)	63	Portrait Gallery (c. 1890)	62
Malone Building (c. 1923)	36	Railroad Depot (c. 1874)	70
Massey Clark House/Matthews Heritage Museum (c. 1880)	49	Renfrow Hardware (Pops Grill) (c. 1892)	66
Matthews AG Building (c. 1919)	23	Sustar House (c. 1920)	90
Matthews Marketplace (c. 1923)	33		

LEGEND

-  Public Restrooms
-  Public Parking
-  Fueling Station
-  Charging Station
-  ATM Locations
-  Public Art Locations
-  Farmers' Market
-  Chamber of Commerce Visitors Center
-  You Are Here
-  Heritage Buildings





DEMOGRAPHICS	1 mile	3 miles	5 miles
Residential Population	7,650	62,878	165,258
Median HH Income	\$60,196	\$81,487	\$81,285
Employment Population	12,390	33,299	59,998
No. of Businesses	815	3,014	6,055

VEHICLES PER DAY