



SAURAGE ROTENBERG
COMMERCIAL REAL ESTATE

MATTHEW SHIRLEY, CCIM

TEL: 225 448-2916

MOBILE: 225 907-5214

EMAIL: MATTHEW@SR-CRE.COM

BRIAN NICOLICH

TEL: 225 930-8252

MOBILE: 225 229-4371

EMAIL: BRIAN@SR-CRE.COM



FOR SALE

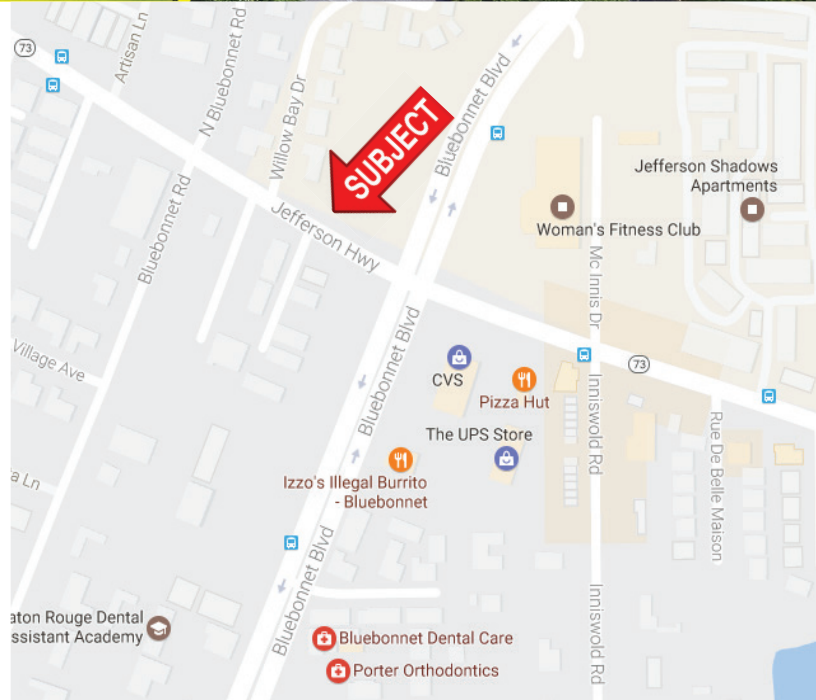
**9515 JEFFERSON HIGHWAY
BATON ROUGE, LA 70809**

\$895,000

53,531 SQ.FT.

HIGHLIGHTS

- Vacant Land for Sale
- Prime Lot
- Near Corner of Jefferson and Bluebonnet
- Adjacent to New Resource Bank
- Currently Zoned A-1
- Can be Re-zoned for Office
- 130 FT of Frontage to Jefferson Highway



SAURAGE ROTENBERG COMMERCIAL REAL ESTATE, LLC
5135 BLUEBONNET BLVD
BATON ROUGE, LA 70809

TEL 225 766-0000
FAX 225 766-2229

WEB SAURAGEROTENBERG.COM

The information contained herein has either been given to us by property owners or is from sources deemed reliable and is believed to be correct, it is not in any way warranted or guaranteed by Saurage Rotenberg Commercial Real Estate. This information is submitted subject to errors, omissions, changes in price, rental or other conditions, withdrawal without notice, and to any special listing conditions imposed by the principals. Licensed in Louisiana.



SAURAGE ROTENBERG
COMMERCIAL REAL ESTATE

MATTHEW SHIRLEY, CCIM

TEL: 225 448-2916

MOBILE: 225 907-5214

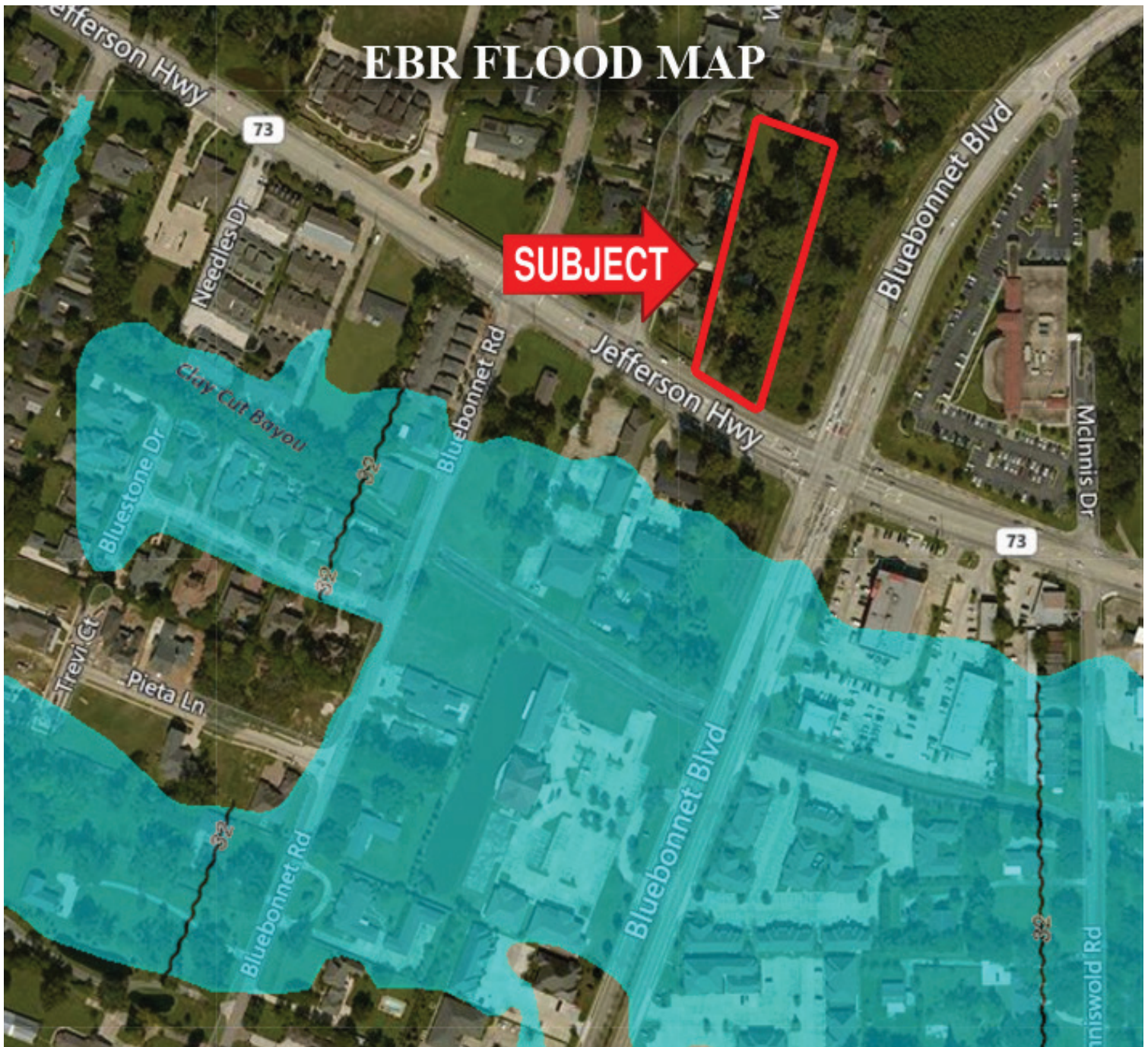
EMAIL: MATTHEW@SR-CRE.COM

BRIAN NICOLICH

TEL: 225 930-8252

MOBILE: 225 229-4371

EMAIL: BRIAN@SR-CRE.COM



SAURAGE ROTENBERG COMMERCIAL REAL ESTATE, LLC
5135 BLUEBONNET BLVD
BATON ROUGE, LA 70809

TEL 225 766-0000
FAX 225 766-2229

WEB SAURAGEROTENBERG.COM

The information contained herein has either been given to us by property owners or is from sources deemed reliable and is believed to be correct, it is not in any way warranted or guaranteed by Saurage Rotenberg Commercial Real Estate. This information is submitted subject to errors, omissions, changes in price, rental or other conditions, withdrawal without notice, and to any special listing conditions imposed by the principals. Licensed in Louisiana.



SAURAGE ROTENBERG
COMMERCIAL REAL ESTATE

MATTHEW SHIRLEY, CCIM

TEL: 225 448-2916

MOBILE: 225 907-5214

EMAIL: MATTHEW@SR-CRE.COM

BRIAN NICOLICH

TEL: 225 930-8252

MOBILE: 225 229-4371

EMAIL: BRIAN@SR-CRE.COM



SAURAGE ROTENBERG COMMERCIAL REAL ESTATE, LLC
5135 BLUEBONNET BLVD
BATON ROUGE, LA 70809

TEL 225 766-0000
FAX 225 766-2229

WEB SAURAGEROTENBERG.COM

The information contained herein has either been given to us by property owners or is from sources deemed reliable and is believed to be correct, it is not in any way warranted or guaranteed by Saurage Rotenberg Commercial Real Estate. This information is submitted subject to errors, omissions, changes in price, rental or other conditions, withdrawal without notice, and to any special listing conditions imposed by the principals. Licensed in Louisiana.