

FOR SALE

# 9375 CHURCH STREET

DES PLAINES, ILLINOIS



[www.cbre.us](http://www.cbre.us)

**CBRE**

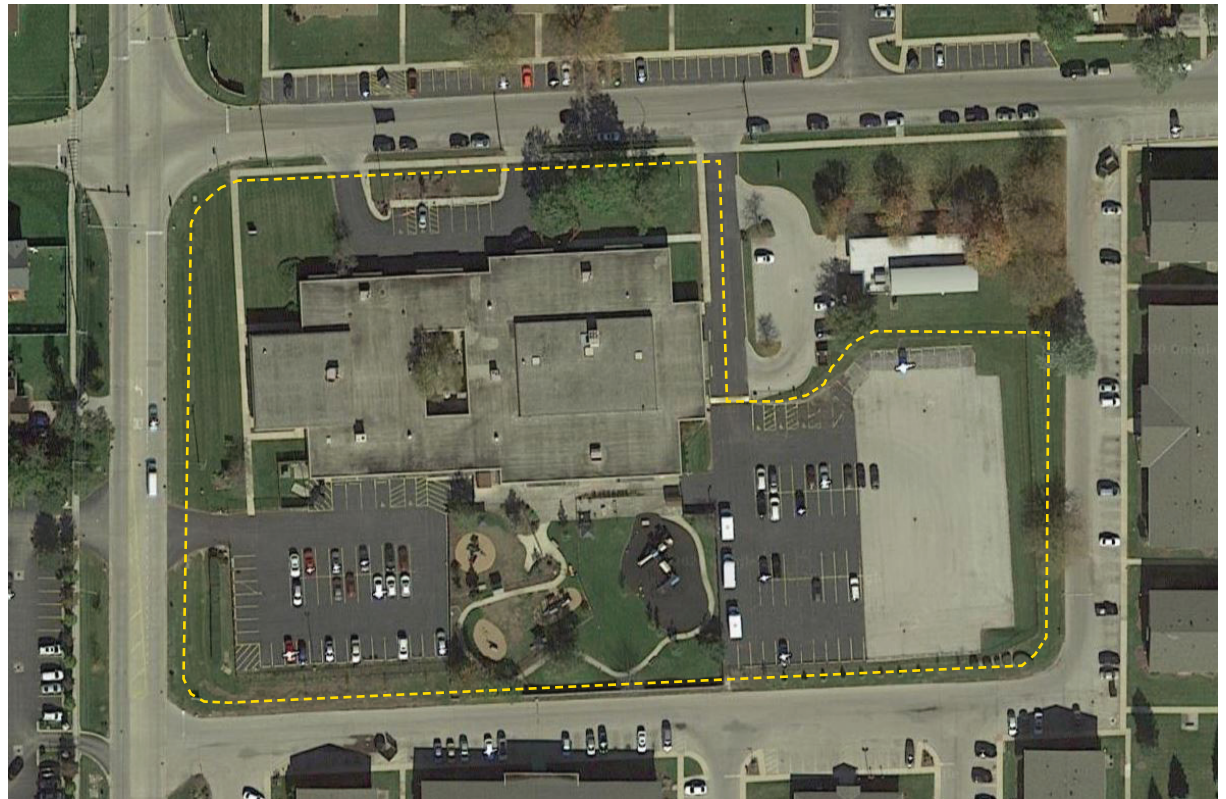
# 9375 CHURCH STREET

DES PLAINES, ILLINOIS



## PROPERTY HIGHLIGHTS

- Single-Story Existing Day Care
- Potential Redevelopment Opportunity
- Price Subject To Offer
- Approximately 43,000 SF
- Approximately 4.5 Acres
- Parcel Nos. 09-15-303-014-0000  
09-15-303-015-0000

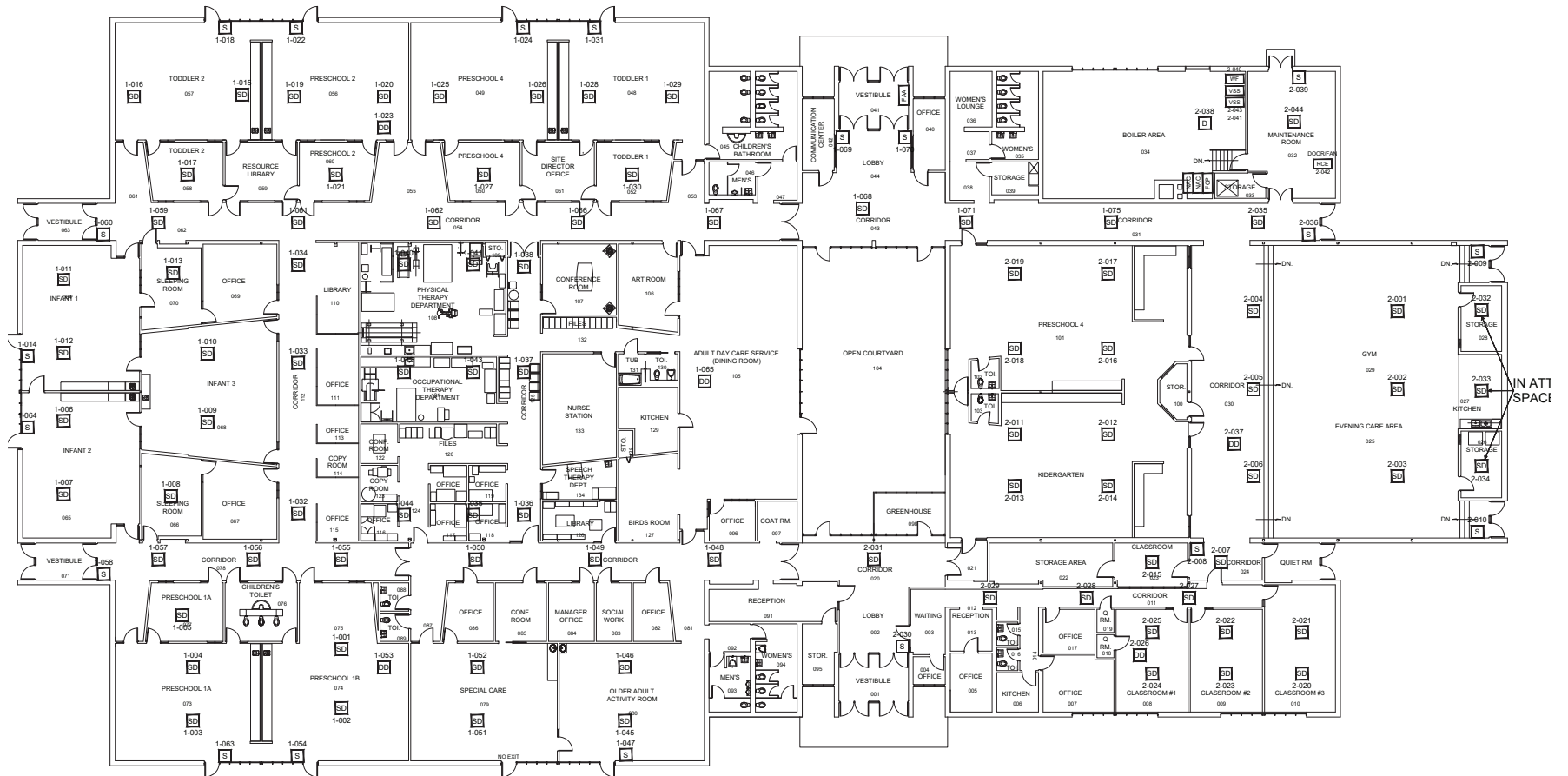


# 9375 CHURCH STREET

DES PLAINES, ILLINOIS



## FLOOR PLAN



# 9375 CHURCH STREET

DES PLAINES, ILLINOIS



## BUILDING PHOTOS

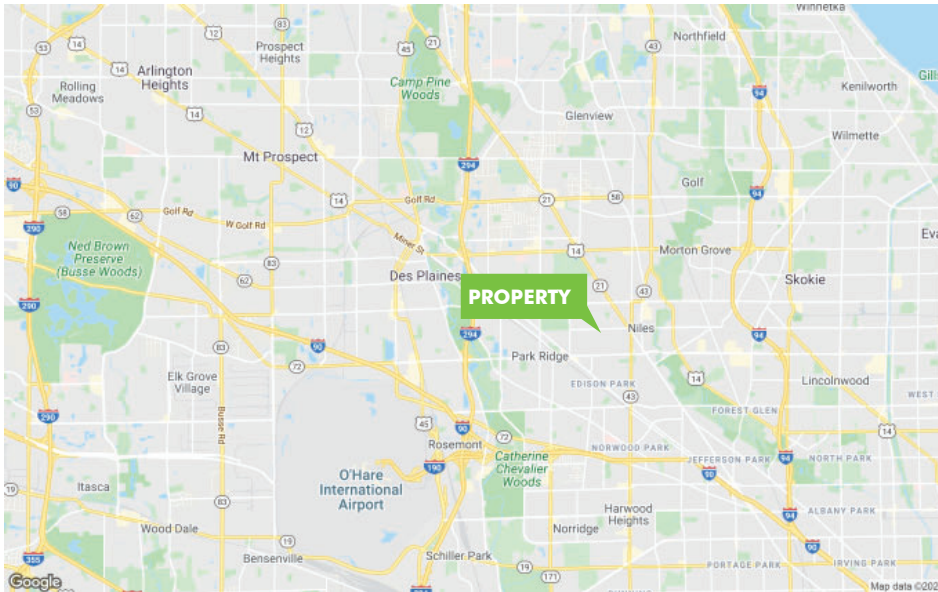


# 9375 CHURCH STREET

DES PLAINES, ILLINOIS



## LOCATION MAP



## DEMOGRAPHIC SNAPSHOT

DEMOGRAPHIC SNAPSHOT	1 MILE	3 MILES	5 MILES
Population	26,151	141,476	323,792
Businesses	715	4,479	13,370
Households	10,251	54,108	124,588
Average Household Income	\$71,855	\$101,516	\$110,987



## CONTACT US

### TOM HOLLINDEN

Senior Director, Transaction Mgmt.

+1 630 573 7805

tom.hollinden@cbre.com

### GARY FAZZIO

Vice Chairman

+1 630 573 7090

gary.fazzio@cbre.com

© 2020 CBRE, Inc. All rights reserved. This information has been obtained from sources believed reliable, but has not been verified for accuracy or completeness. You should conduct a careful, independent investigation of the property and verify all information. Any reliance on this information is solely at your own risk. CBRE and the CBRE logo are service marks of CBRE, Inc. All other marks displayed on this document are the property of their respective owners. Photos herein are the property of their respective owners. Use of these images without the express written consent of the owner is prohibited.

[www.cbre.us](http://www.cbre.us)

**CBRE**