

For Lease

# Retail/Office Space

# NAI Black



## 6009 W Seltice Way

Post Falls, Idaho 83854

### Property Description

Space Available:

- Suite C: 1,011 SF +/-

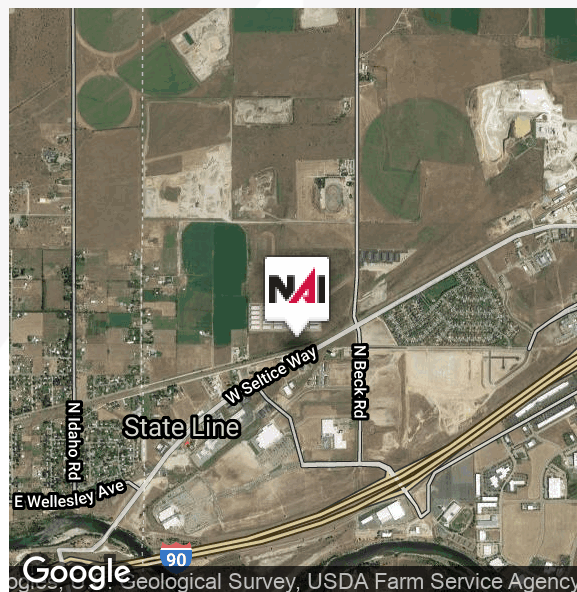
**Lease Rate: \$850/Month**

On Site Parking

Parcel Number: T199901175AC

Great retail/office center in a rapidly growing area in North Idaho

Close to I-90 and the Washington State Line



### Demographics

	1 Mile	5 Miles	10 Miles
Total Households	163	8,790	35,938
Total Population	443	23,778	95,289
Average HH Income	\$74,974	\$69,464	\$66,562

For more information

**Chris Bell, SIOR**

O: 509 622 3538

[cbell@naiblack.com](mailto:cbell@naiblack.com)

No warranty or representation, expression or implied, is made as to the accuracy of the information contained herein, and the same is submitted subject to errors, omissions, change or price, rental or other conditions, prior to sale, lease, financing, or withdrawal without notice, and of special listing conditions imposed by our principals no warranties or representations are made as to the condition of the property or any hazards contained therein or any to be implied.

801 W. Riverside Avenue, Suite 300  
Spokane, WA 99201  
509 623 1000 tel  
[naiblack.com](http://naiblack.com)

## Retail/Office Space

The logo for NAL Black, featuring the letters 'NAL' in a bold, black, sans-serif font, followed by the word 'Black' in a bold, black, sans-serif font. A red diagonal line runs through the 'A' in 'NAL' and extends upwards and to the right, passing through the 'B' in 'Black'.

Floor plan of Suite C, a 1,011 SF office space, highlighted in red. The plan shows Suite C is part of a larger building with several other leased units. Dimensions for Suite C are 40' by 26.5'. Other units are labeled 'LEASED' with various dimensions.



NAI Black respects the intellectual property rights of others. If you believe that your intellectual property rights have been violated by NAI Black or by a third party who has uploaded Content on our Site, please provide the following information to the NAI Black designated copyright agent as addressed below: a. A description of the copyrighted work or other intellectual property that you claim has been infringed; b. A specific description of where the material that you claim is infringing is located on the Site so the agent is able to locate it; c. An address, telephone number, and e-mail address where NAI Black can contact you and, if different, an e-mail address where the alleged infringing party can be contacted; d. A signed statement that you have a good-faith belief that the material use is not authorized by the copyright owner or other intellectual property rights owner, by its agent, or by law. E. A signed statement that you understand that you may be liable for damages if you make a false statement of ownership, or if you remove material in bad faith. There are substantial penalties for false claims. NAI Black may request additional information before removing any infringing material. NAI Black may provide the alleged infringing party with your e-mail address so that that person can respond to your allegations. NAI Black has registered a designated agent with the Copyright Office pursuant to 17 U.S.C. 512(c). If you believe your copyright material is being used on this Site without permission, please notify the designated agent as follows:

By e-mail: [mary@commercialmls.com](mailto:mary@commercialmls.com) | Subject Line: Copyright Concern  
By mail: Commercial Brokers Association Attn: DMCA Designated Agent, 112131 113th Ave NE Suite 101 | Kirkland, WA 98034

If e-mailing your copyright infringement notice, then NAI Black must receive the signed statement(s) mentioned above by mail, or attached to the e-mail, before we are required to take action.