



**FOR LEASE
±2,655 RSF**

**2310 N. 56th Street, Phoenix, AZ
ST. STEPHENS EPISCOPAL CHURCH**



SUBJECT



IDEAL FOR NON-PROFIT OR SCHOOL

LEE & ASSOCIATES
COMMERCIAL REAL ESTATE SERVICES

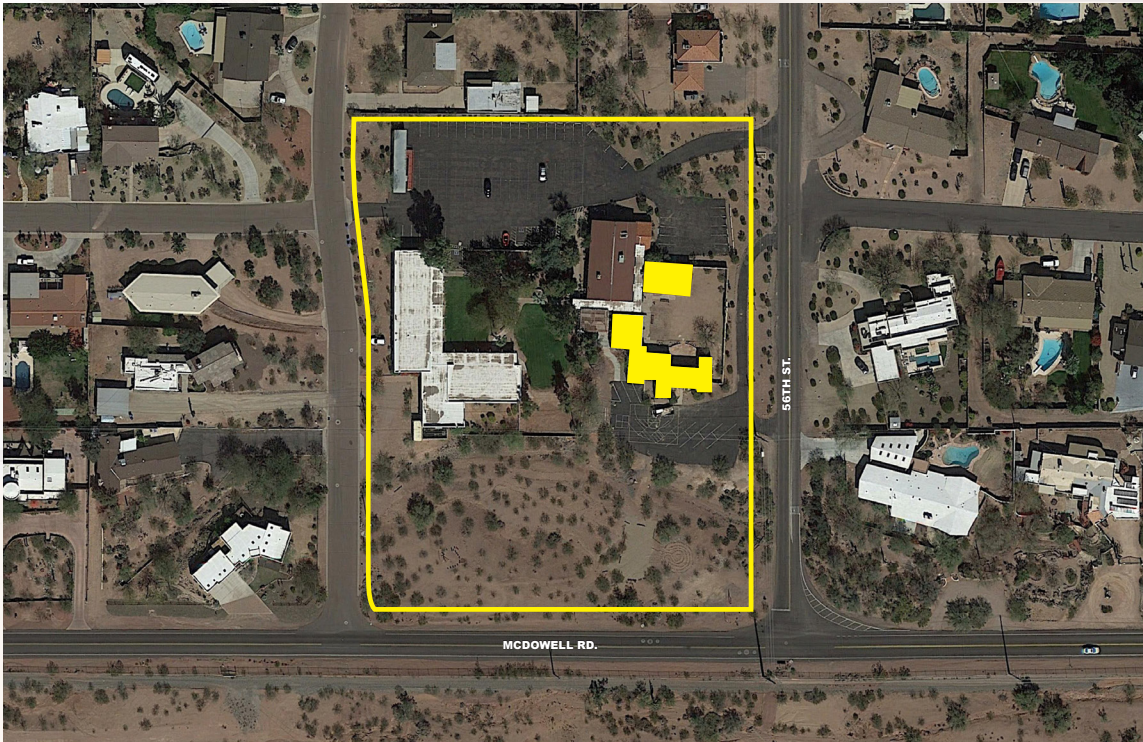
R. CRAIG COPPOLA
CCIM, CRE, SIOR
PRINCIPAL
602.954-3762
ccoppola@leearizona.com

ANDREW CHENEY
CCIM, CRE, SIOR
PRINCIPAL
602.954-3769
acheney@leearizona.com

GREGG KAFKA
CCIM
PRINCIPAL
602.954-3777
gkafka@leearizona.com



COPPOLA • CHENEY
REAL ESTATE BROKERAGE AT THE HIGHEST LEVEL®



Property Highlights

- ±2,655 RSF in two adjacent buildings (±1,873 RSF & ±782 RSF)
- Ideal for a nonprofit or school use
- Carefully landscaped garden with seating
- Minutes from Loop 202
- Close Proximity to Arcadia, Arizona Country Club and Papago Park

