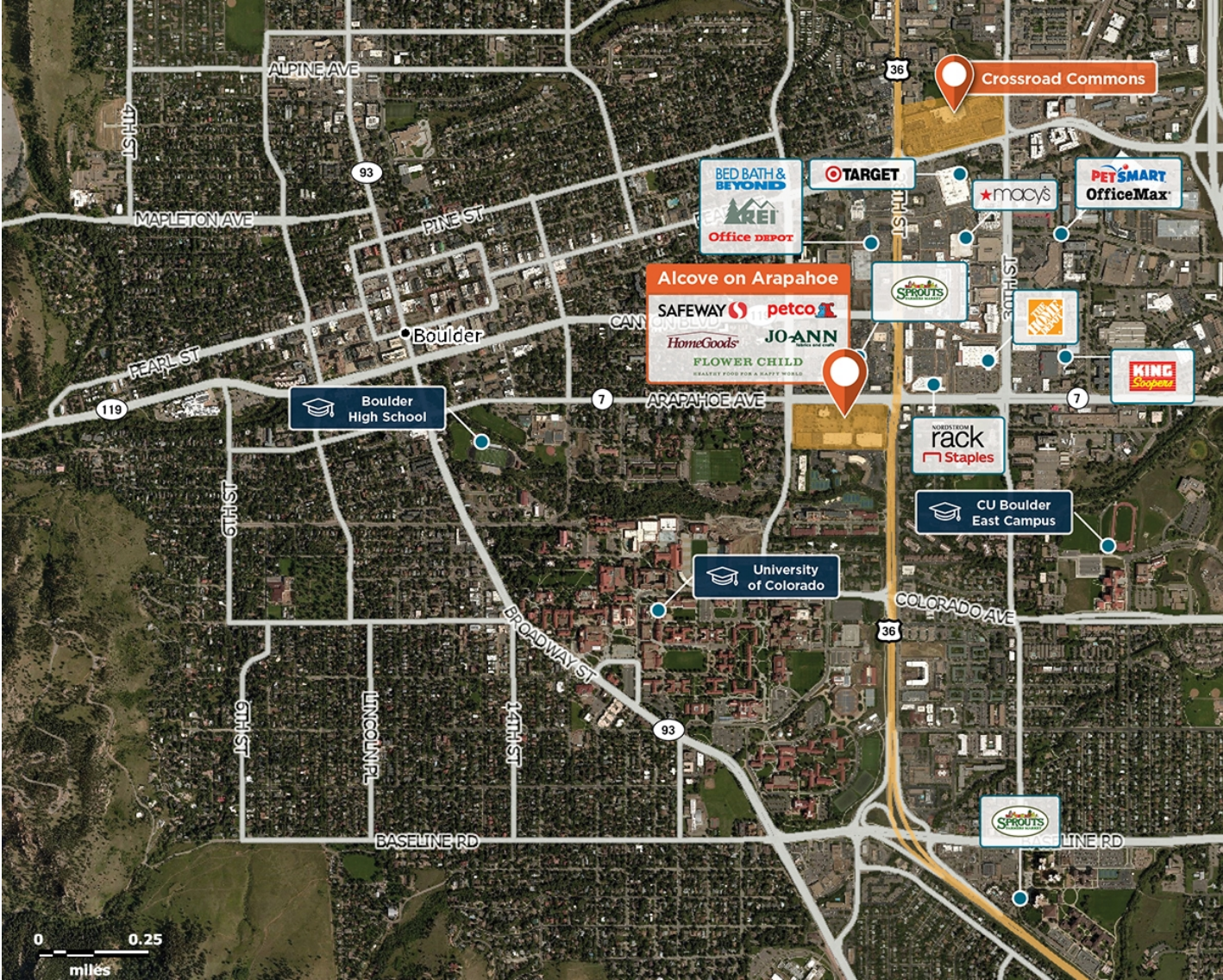


# Alcove on Arapahoe

📍 2798 Arapahoe Avenue, Boulder, CO 80302



Near the University of Colorado with exceptional traffic count, positioned close to affluent neighborhoods.

**Center Size:** 159,050  
**Spaces Available:** 5

**Within 3 Miles**

Population	<b>94,632</b>
Avg. Household Income	<b>116,934</b>
Avg. Home Value	<b>1,050,746</b>
Vehicles Per Day	<b>33,787</b>

This site plan is not a representation, warranty or guarantee as to size, location, identity of any tenant, the suite number, address or any other physical indicator or parameter of the property and for use as approximated information only. The improvements are subject to changes, additions, and deletions as the architect, landlord, or any governmental agency may direct or determine in their absolute discretion.

# Alcove on Arapahoe

2798 Arapahoe Avenue, Boulder, CO 80302



Center Size: 159,050



SPACE	TENANT	SF
160	AVAILABLE	4,954
190	AVAILABLE (Salon)	1,100
220	AVAILABLE	7,672
240	AVAILABLE	2,605
365	AVAILABLE	1,518
100	SAFEWAY	43,500
110	FLOWER CHILD	3,380
140	HOMEGOODS	21,527
150	ULTA SALON	11,161
165	PLATO'S CLOSET	2,661
170	PETCO	15,056
230	JO-ANN FABRICS	17,258
250	SALLY BEAUTY SUPPLY	1,600
260	GNC	1,355
270	KALITA GRILL	1,563
290	THE LASH LOUNGE	1,040
310	LOTUS NAILS	2,221
320	BOULDER TIFFIN-WALLAH'S	1,750
330	COLD STONE CREAMERY	1,192
340	B FIT	2,975
345	PIZZA HUT	1,404
350	BOULDER FRESH GARDEN	2,746
360	MASSAGE ENVY	4,000
370	VERIZON WIRELESS	2,954
380	NOTHING BUNDT CAKES	1,858

1 of 1

This site plan is not a representation, warranty or guarantee as to size, location, identity of any tenant, the suite number, address or any other physical indicator or parameter of the property and for use as approximated information only. The improvements are subject to changes, additions, and deletions as the architect, landlord, or any governmental agency may direct or determine in their absolute discretion.