



1955 Lower Roswell Rd

Marietta, Georgia 30068

Property Description

4,743 SF Newly Renovated Office Space

Property Highlights

- Office Building with Signage in High Traffic Area
- 4,743 Available Square Feet
- (2,386 SF / 2,357 SF Options)
- 0.31 Acres
- Built 1984 / Ren. 2017
- OI Zoning

Location

Convenient Access to I-75
South Marietta Parkway SE (Cross Street)
Traffic Count:

16,200 VPD - Lower Roswell Road
40,300 VPD - Marietta Parkway



For more information:

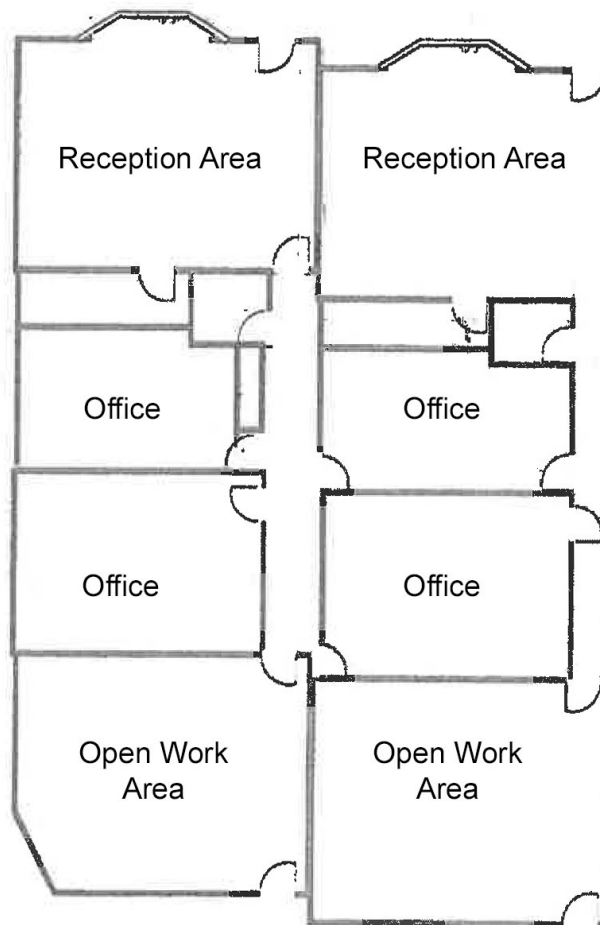
Minton Edwards

404 812 4028 • medwards@naibg.com

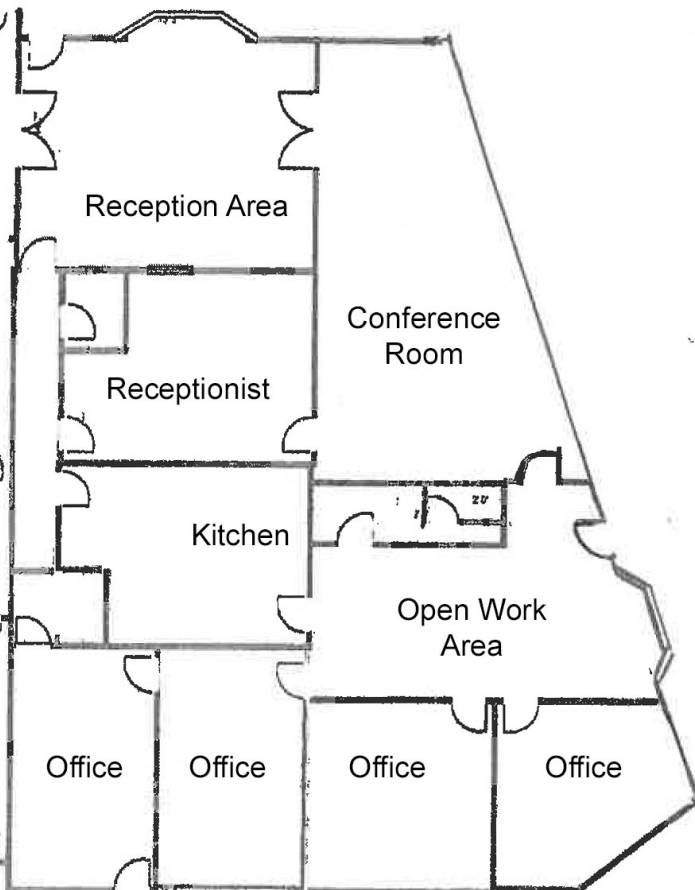
For Lease

1955 Lower Roswell Road

Option 2A: +/- 2,386 SF



Option 2B: +/- 2,357 SF



SIZE (SF)	LEASE RATE	LEASE TYPE	COMMENTS
4,743 SF	\$15.50/SF	MG	11 offices, 4 restrooms, kitchen, conference room, reception area/office, 3 open work areas
2,386 SF	\$15.50/SF	MG	4 offices, 2 restrooms, reception area, 3 open work areas
2,357 SF	\$15.50/SF	MG	4 offices, 2 restrooms, kitchen, conference room, reception area/office, open work area