

# PRICE REDUCED!



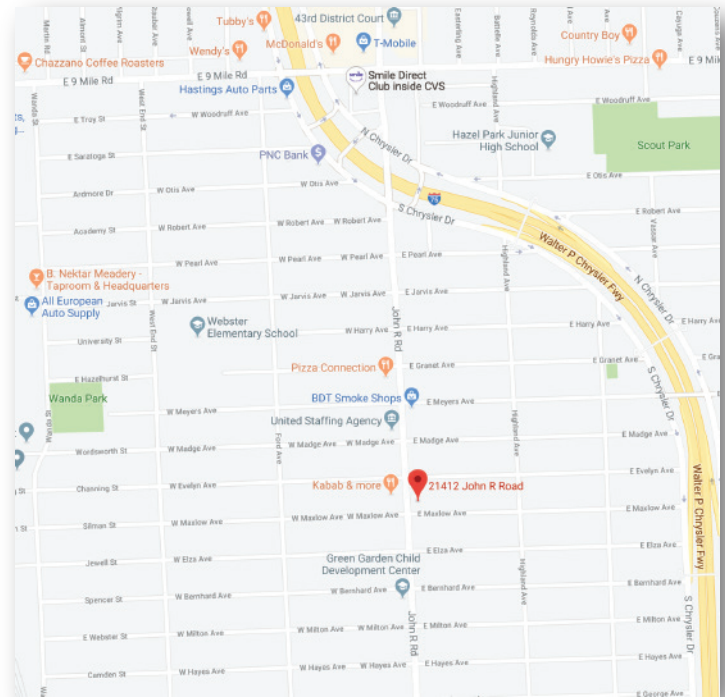
## PILOT PROPERTY GROUP

### 21412 JOHN R ROAD, HAZEL PARK 48030

#### PROPERTY OVERVIEW:

- Ideal for a service company or contractor
- 100' frontage on John R Road.
- Approximate 4,150 SF fenced outside storage area.
- 2-bay shop area with 12.5' ceiling.
- Near I-75 & I-696 interchanges.

Property Type:	Commercial
Total Square Footage:	1,300
Minimum Sq. Ft. Available:	1,300
Maximum Sq. Ft. Available:	1,300
Sale Price:	\$139,000.00
Parcel Size:	.23 Acres
Year Built:	1970
Zoning:	Commercial
Office Sq. Ft.:	Approx. 210
Shop Sq. Ft.:	Approx. 870
Ceiling Height:	9' - 12.6'
Parking Spaces:	Ample
Property Taxes:	\$4,633.00
Cross Streets:	John R Rd. & E Maxlow Ave. Between 8 Mile & 9 Mile Roads on east side of John R.

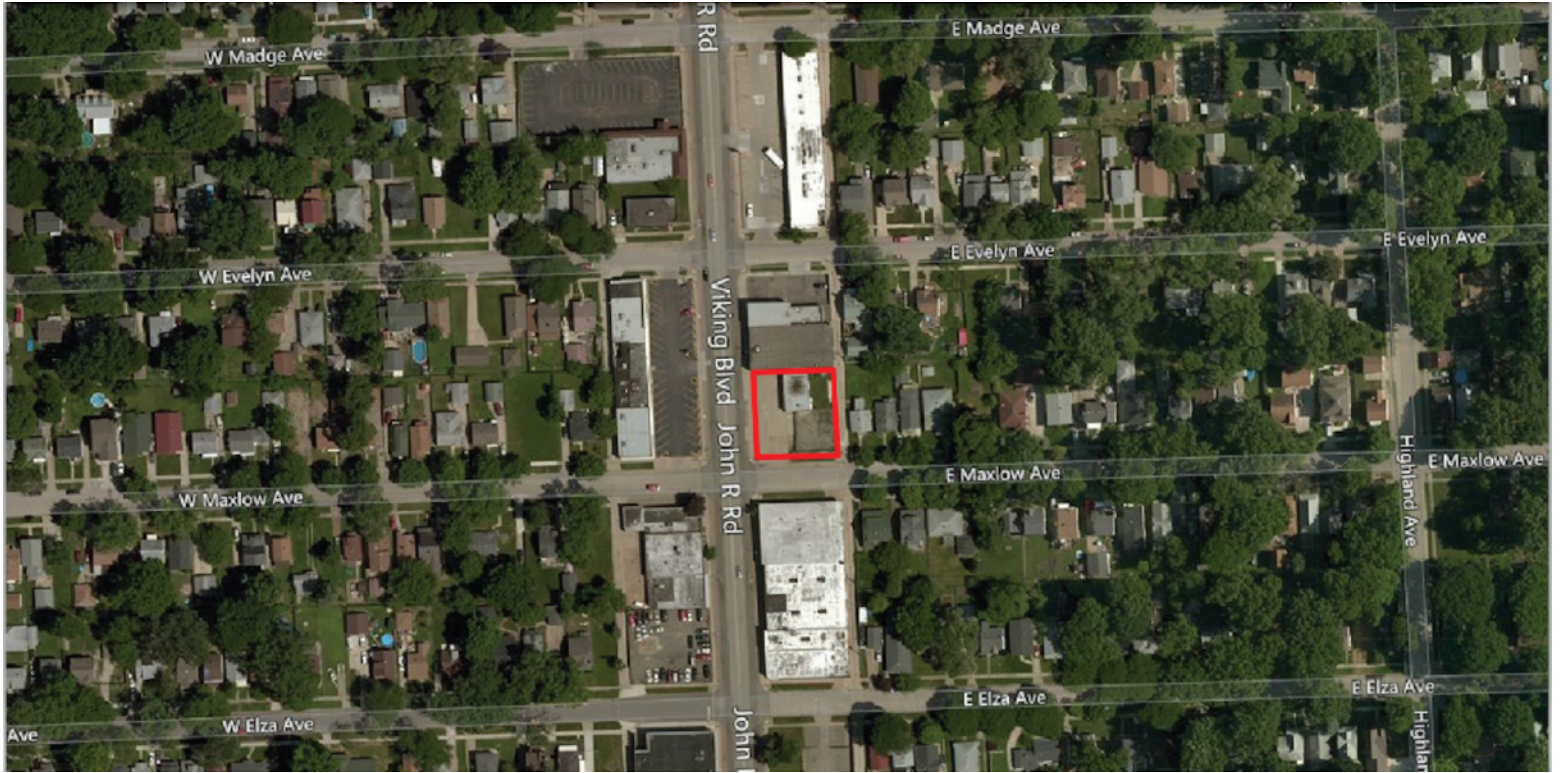


#### AGENT CONTACT INFO

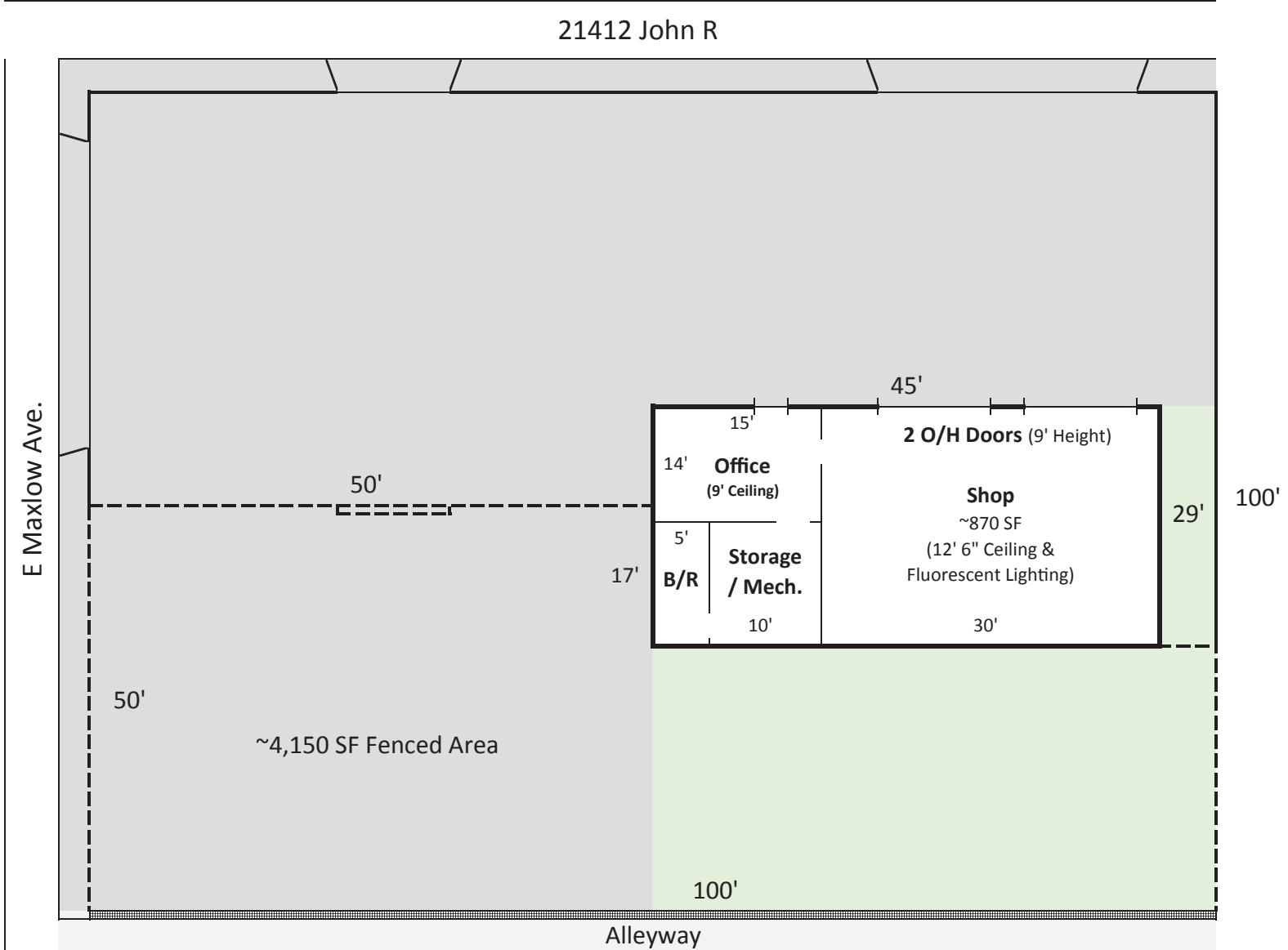
TILL PACELLA O: 586.254.0900 x123 • C: 586.291.3582 • till@pilotpg.com

*Matching the right people to the right place.*

44400 Van Dyke, Suite 101, Sterling Heights, MI 48314 • 586.254.0900 • www.pilotpg.com



*Matching the right people to the right place.*



\* Estimated dimensions

*Matching the right people to the right place.*