



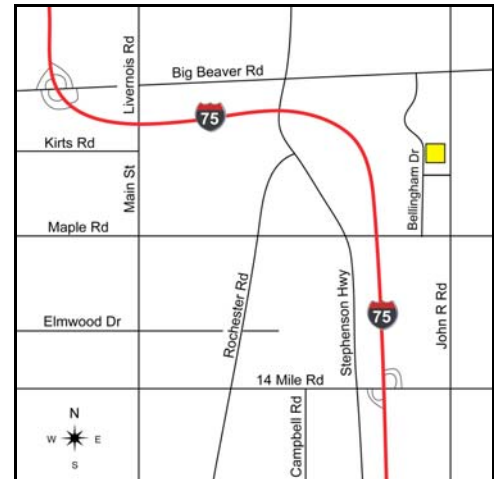
INDUSTRIAL

For Lease



2354 Bellingham Drive, Troy, MI

Total Bldg Sq. Ft.:	19,775
Available Sq. Ft.:	19,775
Total Shop Sq. Ft.:	16,921
Total Office Sq. Ft.:	2,854
Lease Rate:	\$2.95 NNN
Zoning:	Ind. Improved
Acreage:	2.42
Clear Height:	16'
Truckwells / Grade Doors:	0 / 1
Power:	600 Amps, 240 Volts
Heat Type:	Gas Unit
Sprinklers:	Yes
Total Parking:	N/A
Available:	Immediately



Comments: Good clean space, can remodel to suit. Twin building next door is available as well. Available as-is.

For additional information, contact:

Paul Hoge, (248) 948-0103
paulhoge@signatureassociates.com

John Boyd, (248) 948-0102
jboyd@signatureassociates.com



One Towne Square, Suite 1200 - Southfield, Michigan 48076
www.signatureassociates.com



INDUSTRIAL

For Lease

2354 Bellingham Drive, Troy, MI

Site Plan

