

FOR LEASE

Belle Meade Office Space

New Construction Underway

Entire Second Floor Available

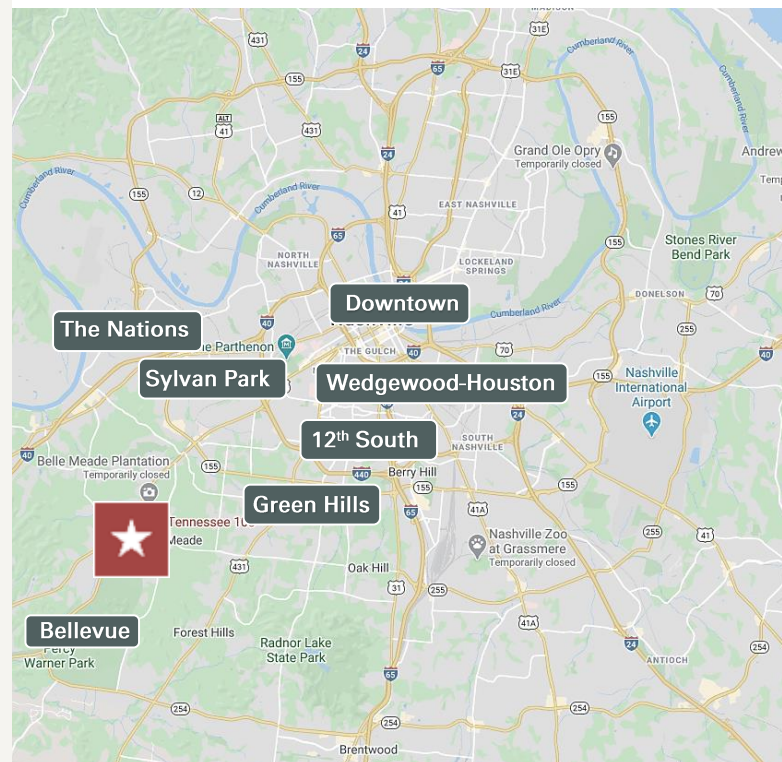
Rare Opportunity to Lease Commercial Space in Belle Meade

6210 Hwy 100 N., Nashville, TN 37205



HIGHLIGHTS

- New Construction in the Belle Meade
- Construction Underway: delivery is anticipated for early summer of 2021
- ±8,228 SF Total available
- Entire second floor available for lease
 - Space 1: ±3,944 rentable square feet
 - Space 2: ±1,992 rentable square feet
 - Space 3: ±2,352 rentable square feet
- Rental Rate: \$30.00 per rentable square feet—Full Service Lease Rate
- TI: Negotiable
- First floor will be the new home of Belle Meade Animal Hospital
- Located in the Belle Meade area; a stone's throw from the Hwy 100/70 split



R. Stephen Prather
Senior Vice President
O: 615.345.7254
sprather@charleshawkinsco.com

Matt Serck
Vice President
O: 615.345.7201
mserck@charleshawkinsco.com

Exclusively listed by:
Charles Hawkins Co. / CORFAC International
760 Melrose Avenue
Nashville, TN 37211
T: 615.256.3189 / F: 615.254.4026

For Lease
±8,288 SF Available
Commercial Space

6210 Hwy 100 N.
Nashville, TN 37205
Davidson County

CHARLES
HAWKINS CO.

AERIALS/RENDERING



R. Stephen Prather
Senior Vice President
O: 615.345.7254
sprather@charleshawkinsco.com

Matt Serck
Vice President
O: 615.345.7201
mserck@charleshawkinsco.com

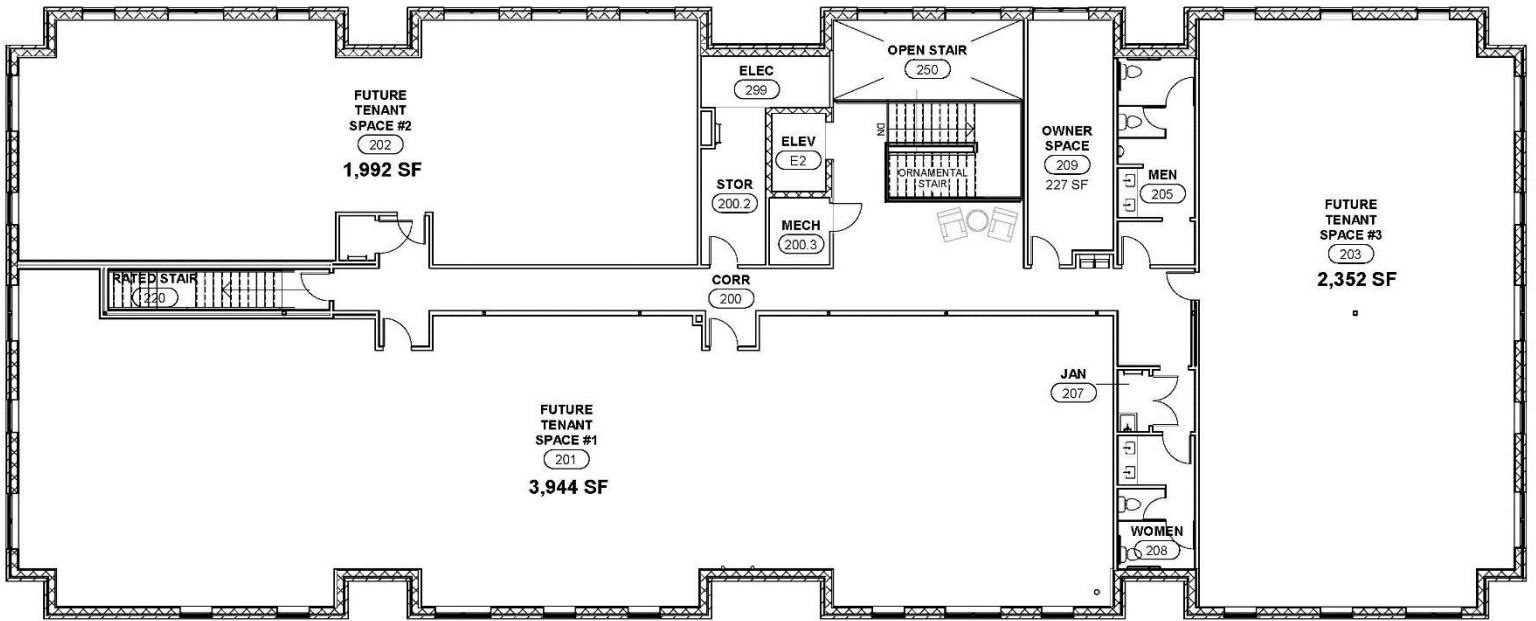
Exclusively listed by:
Charles Hawkins Co. / CORFAC International
760 Melrose Avenue
Nashville, TN 37211
T: 615.256.3189 / F: 615.254.4026

For Lease
±8,288 SF Available
Commercial Space

6210 Hwy 100 N.
Nashville, TN 37205
Davidson County

CHARLES
HAWKINS CO.

AVAILABLE SUITES 2nd Floor



2nd FLOOR PLAN

NOTE: TENANT SPACE SQUARE FOOTAGES LISTED INCLUDE TENANT LOAD FACTOR

R. Stephen Prather
Senior Vice President
O: 615.345.7254
sprather@charleshawkinsco.com

Matt Serck
Vice President
O: 615.345.7201
mserck@charleshawkinsco.com

Exclusively listed by:
Charles Hawkins Co. / CORFAC International
760 Melrose Avenue
Nashville, TN 37211
T: 615.256.3189 / F: 615.254.4026