

A photograph of a modern commercial building with a glass facade. The building is surrounded by lush greenery, including several tall trees and a prominent palm tree in the foreground. The sky is blue with scattered white clouds. In the top right corner, there is a logo for 'FOUNDRY COMMERCIAL' on a dark grey background, with an orange bar above it.

FOUNDRY
COMMERCIAL

SAND LAKE WEST
ORLANDO, FL

1,918 – 11,793 \pm RSF AVAILABLE

SAND LAKE WEST | PHASE III
7500 – 7829 MUNICIPAL DRIVE, ORLANDO FL

FOUNDRY
COMMERCIAL



SAND LAKE WEST | PHASE III

PROPERTY FEATURES

- Well located garden office / flex with upgraded landscaping
- 100% office available
- Grade-level doors available
- Suite and partial building signage available
 - Individual entrance/address
- (Easy access to I-4, airport, Sand Lake Road, Kirkman Road, and International Drive)
- On-campus management
- 100+ restaurants within 1 mile

For more information, please contact:

J. PAUL REYNOLDS, CCIM
Principal
407.540.7728
paul.reynolds@foundrycommercial.com
Licensed Real Estate Brokers

JOHN PIETKIEWICZ
Vice President
407.540.2793
john.pietkiewicz@foundrycommercial.com
Licensed Real Estate Brokers

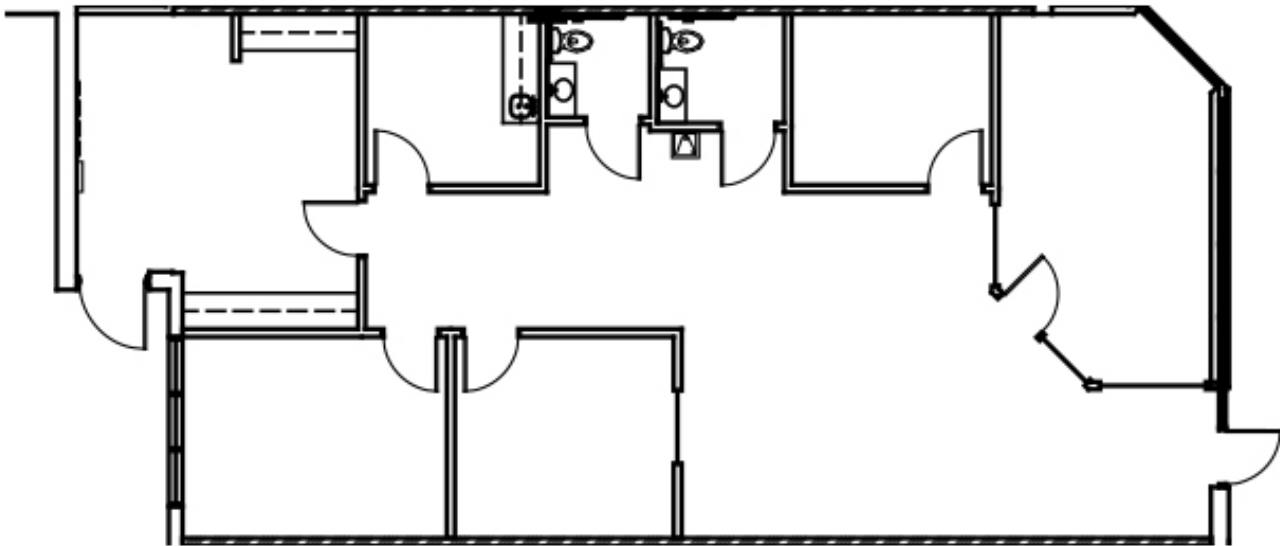
Although the information contained herein was provided by sources believed to be reliable, Foundry Commercial makes no representation, expressed or implied, as to its accuracy and said information is subject to errors, omissions or changes.

420 South Orange Avenue, Suite 400
Orlando, FL 32801
t: 407.540.7700 | f: 407.540.7750

foundrycommercial.com

SAND LAKE WEST | PHASE III S
7698 MUNICIPAL DRIVE, ORLANDO FL 32819

SUITE 7698 – 1,918± RSF AVAILABLE 3/1/2020



For more information, please contact:

J. PAUL REYNOLDS, CCIM
Principal
407.540.7728
paul.reynolds@foundrycommercial.com
Licensed Real Estate Brokers

JOHN PIETKIEWICZ
Vice President
407.540.2793
john.pietkiewicz@foundrycommercial.com
Licensed Real Estate Brokers

Although the information contained herein was provided by sources believed to be reliable, Foundry Commercial makes no representation, expressed or implied, as to its accuracy and said information is subject to errors, omissions or changes.

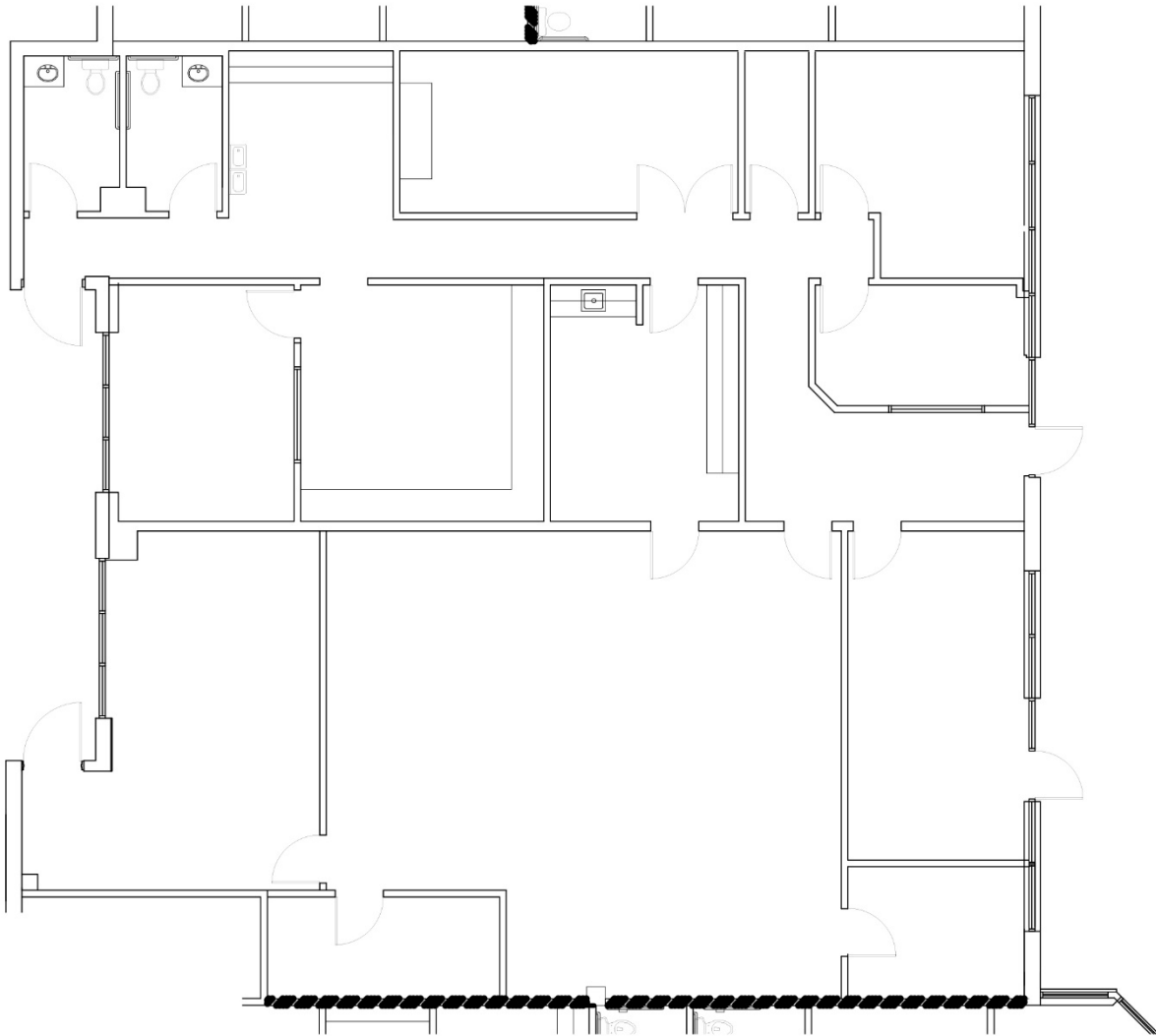
FOUNDRY
COMMERCIAL

420 South Orange Avenue, Suite 400
Orlando, FL 32801
t: 407.540.7700 | f: 407.540.7750

foundrycommercial.com

SAND LAKE WEST | PHASE III S
7688 MUNICIPAL DRIVE, ORLANDO FL 32819

SUITE 7688 – 3,680± RSF AVAILABLE 6/1/2020



For more information, please contact:

J. PAUL REYNOLDS, CCIM
Principal
407.540.7728
paul.reynolds@foundrycommercial.com
Licensed Real Estate Brokers

JOHN PIETKIEWICZ
Vice President
407.540.2793
john.pietkiewicz@foundrycommercial.com
Licensed Real Estate Brokers

FOUNDRY
COMMERCIAL

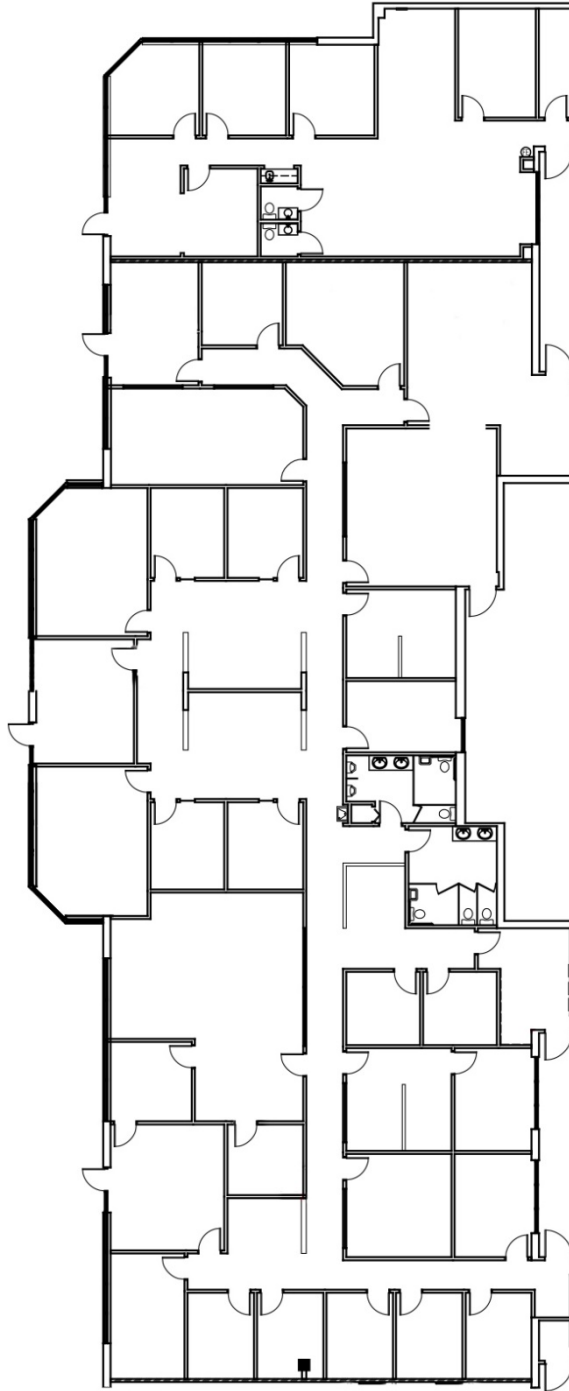
420 South Orange Avenue, Suite 400
Orlando, FL 32801
t: 407.540.7700 | f: 407.540.7750

foundrycommercial.com

Although the information contained herein was provided by sources believed to be reliable, Foundry Commercial makes no representation, expressed or implied, as to its accuracy and said information is subject to errors, omissions or changes.

SAND LAKE WEST | PHASE III S
7649-7657 GOLF CHANNEL DRIVE, ORLANDO FL 32819

SUITE 7649-7657: 11,793± RSF AVAILABLE



For more information, please contact:

J. PAUL REYNOLDS, CCIM
Principal
407.540.7728
paul.reynolds@foundrycommercial.com
Licensed Real Estate Brokers

JOHN PIETKIEWICZ
Vice President
407.540.2793
john.pietkiewicz@foundrycommercial.com
Licensed Real Estate Brokers

FOUNDRY
COMMERCIAL

420 South Orange Avenue, Suite 400
Orlando, FL 32801
t: 407.540.7700 | f: 407.540.7750

foundrycommercial.com

Although the information contained herein was provided by sources believed to be reliable, Foundry Commercial makes no representation, expressed or implied, as to its accuracy and said information is subject to errors, omissions or changes.

SAND LAKE WEST | PHASE IV
5422 CARRIER DRIVE, ORLANDO FL

FOUNDRY
COMMERCIAL



SAND LAKE WEST | PHASE IV

- Well located garden office / flex with upgraded landscaping
- Dock-high doors available
- 100% HVAC
- Easy access to I-4, airport, Sand Lake Road, Kirkman Road, and International Drive
- On-campus management
- 100+ restaurants within 1 mile

For more information, please contact:

J. PAUL REYNOLDS, CCIM
Principal
407.540.7728
paul.reynolds@foundrycommercial.com
Licensed Real Estate Brokers

JOHN PIETKIEWICZ
Vice President
407.540.2793
john.pietkiewicz@foundrycommercial.com
Licensed Real Estate Brokers

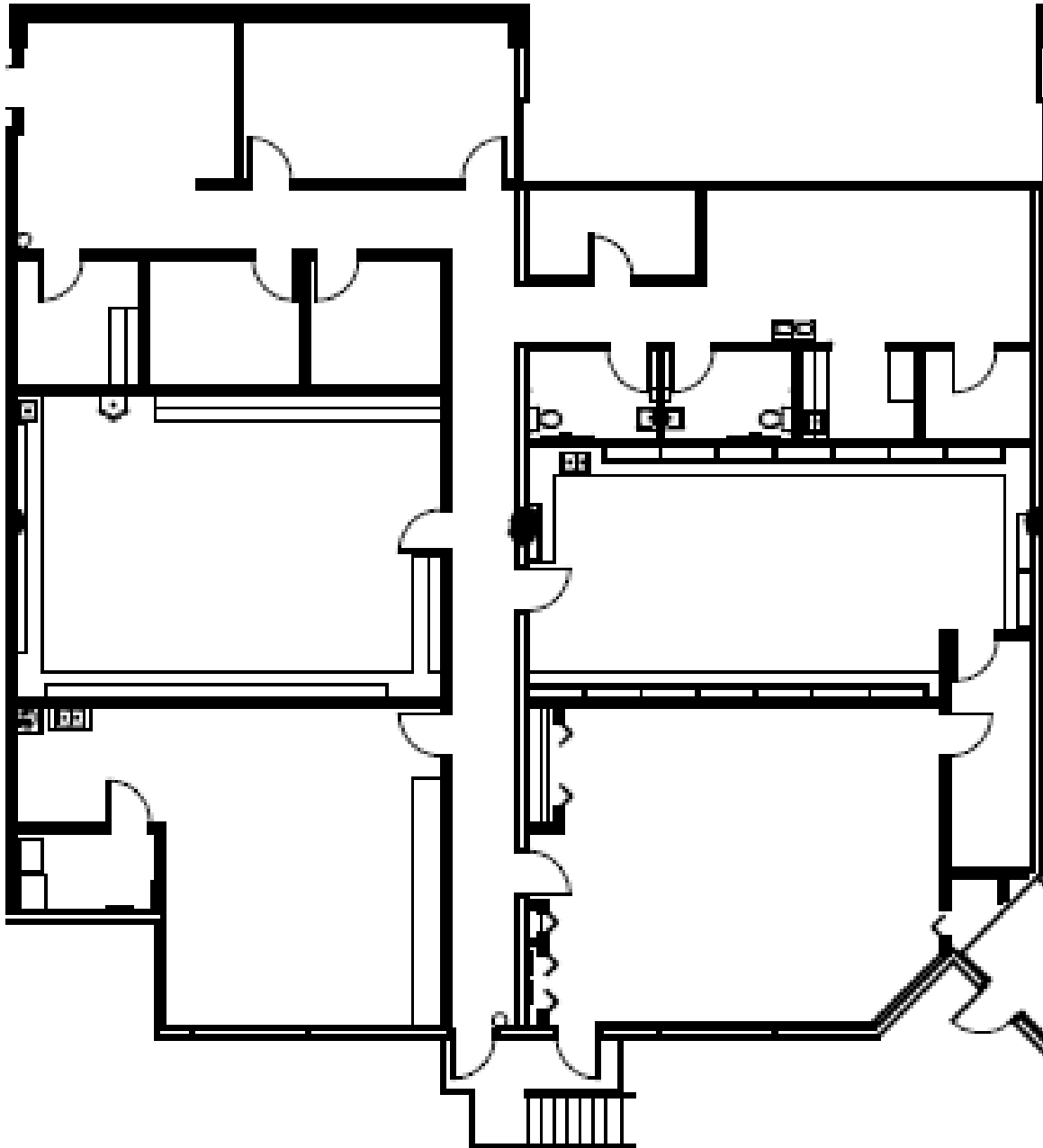
420 South Orange Avenue, Suite 400
Orlando, FL 32801
t: 407.540.7700 | f: 407.540.7750

Although the information contained herein was provided by sources believed to be reliable, Foundry Commercial makes no representation, expressed or implied, as to its accuracy and said information is subject to errors, omissions or changes.

foundrycommercial.com

SAND LAKE WEST | PHASE IV
5422 CARRIER DRIVE, ORLANDO FL

SUITES 303-304: 4,908± RSF AVAILABLE



For more information, please contact:

J. PAUL REYNOLDS, CCIM
Principal
407.540.7728
paul.reynolds@foundrycommercial.com
Licensed Real Estate Brokers

JOHN PIETKIEWICZ
Vice President
407.540.2793
john.pietkiewicz@foundrycommercial.com
Licensed Real Estate Brokers

FOUNDRY
COMMERCIAL

420 South Orange Avenue, Suite 400
Orlando, FL 32801
t: 407.540.7700 | f: 407.540.7750

foundrycommercial.com

Although the information contained herein was provided by sources believed to be reliable, Foundry Commercial makes no representation, expressed or implied, as to its accuracy and said information is subject to errors, omissions or changes.