

AVAILABLE FOR LEASE: 2,352 SF

# OSTROW BUSINESS PARK

**7888-7898**

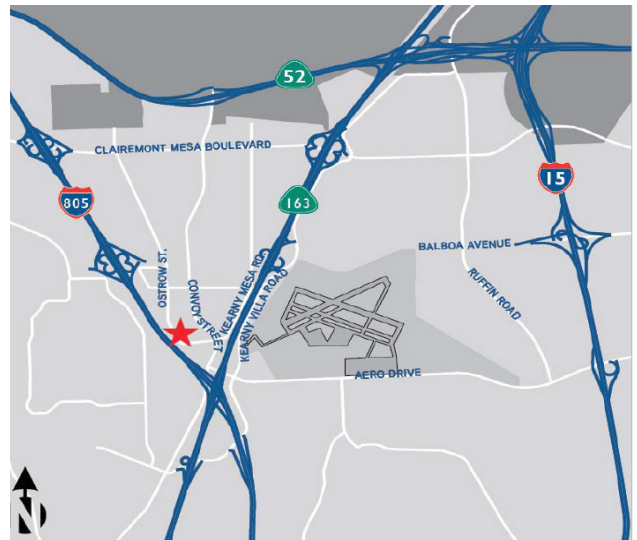
**OSTROW STREET, SUITES A & B**

SAN DIEGO, CA 92111



## PROPERTY FEATURES

- + 2 Industrial Warehouse Buildings totaling 23,328 SF
- + City of San Diego IL-2-1 zoning
- + Central Kearny Mesa location
- + Excellent access to I-805, SR-163, SR-52 and minutes to I-15
- + Lease Rate: \$1.40/SF MG  
Modified Gross rates do not include a CAM Fee= Approx. \$0.14/PSF/Month)



## CONTACT US

**PETE CARROCCIO**

+1 858 546 4679

pete.carroccio@cbre.com

Lic. 02022898

[www.cbre.com](http://www.cbre.com)

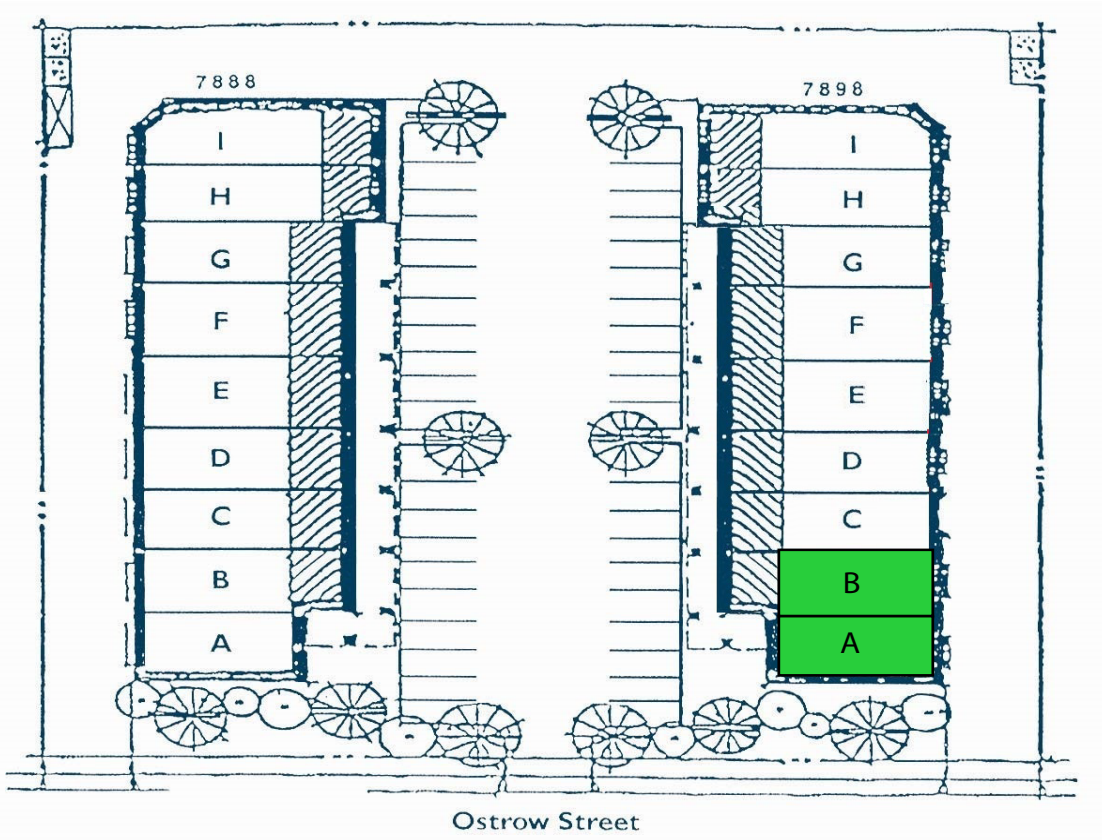
**CBRE**

# FOR LEASE OSTROW BUSINESS PARK

7888-7898  
OSTROW STREET,  
SUITES A & B  
San Diego, CA 92111



## SITE PLAN / AVAILABILITY



Address	Size	Lease Rate	Available
7898 Ostrow Street, Suites A & B	2,352 SF	\$1.40/SF MG*	Immediately

\* Modified Gross rates do not include a  
CAM fee= Approx. \$0.14/PSF/Month

© 2017 CBRE, Inc. This information has been obtained from sources believed reliable. We have not verified it and make no guarantee, warranty or representation about it. Any projections, opinions, assumptions or estimates used are for example only and do not represent the current or future performance of the property. You and your advisors should conduct a careful, independent investigation of the property to determine to your satisfaction the suitability of the property for your needs.

Photos herein are the property of their respective owners and use of these images without the express written consent of the owner is prohibited.

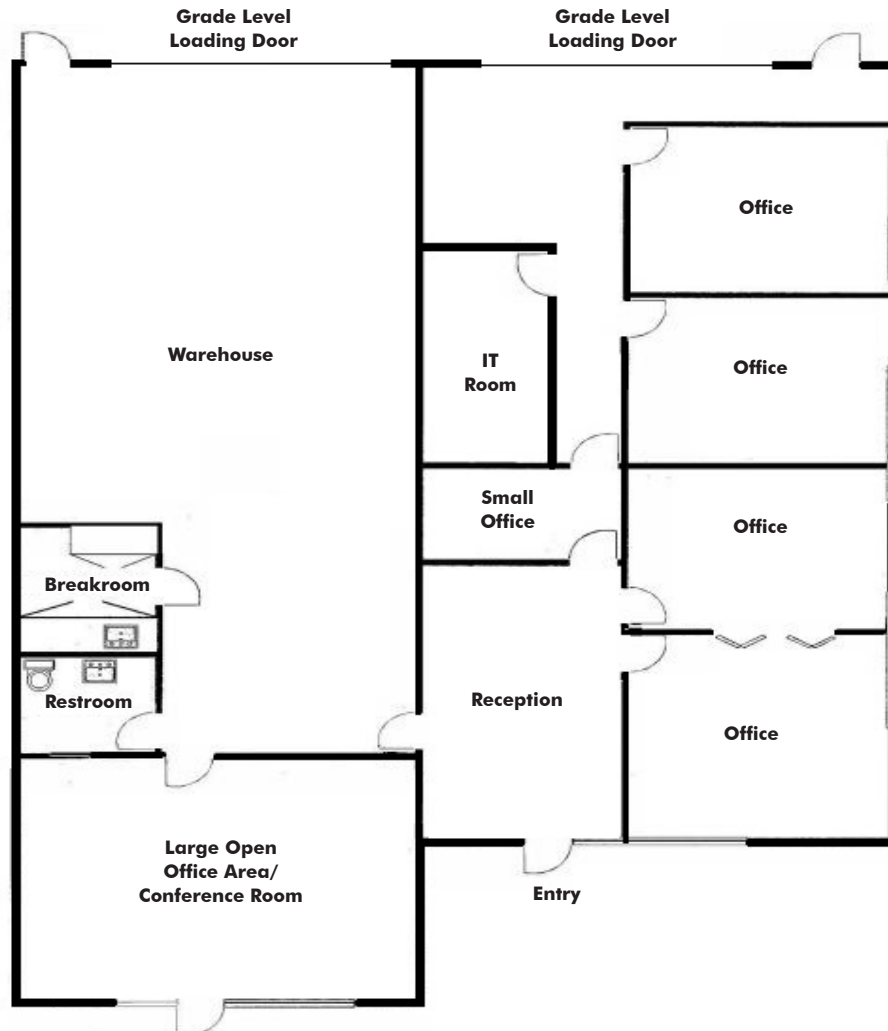
FOR LEASE  
**OSTROW BUSINESS PARK**

7888-7898  
**OSTROW STREET,  
SUITES A & B**  
San Diego, CA 92111



**FLOOR PLAN**

7898 OSTROW STREET, SUITES A & B | 2,352 SF



**CONTACT US**

**PETE CARROCCIO**

+1 858 546 4679  
pete.carroccio@cbre.com  
Lic. 02022898