

FOR SALE

8655 South 208th Street

Kent, WA



SALE PRICE: \$5,880,000

36,778 SF total
-33,372 SF footprint
-3,406 mezzanine (office)

Office 6,812 SF total
-3,406 SF upstairs
-3,406 SF downstairs

1.50 acres (approximately 65,256 SF)

16' clear height

2 DH / 1 GL loading door

Concrete tilt-up construction

Built in 1972 / M-2 (City of Kent) zoning

44 total parking spaces

1,200 amps / 277/480 volt power

Great manufacturing building, 3 minutes to 212th & SR-167

CONTACT

Mike Newton
206.248.7311
mnewton@kiddermathews.com

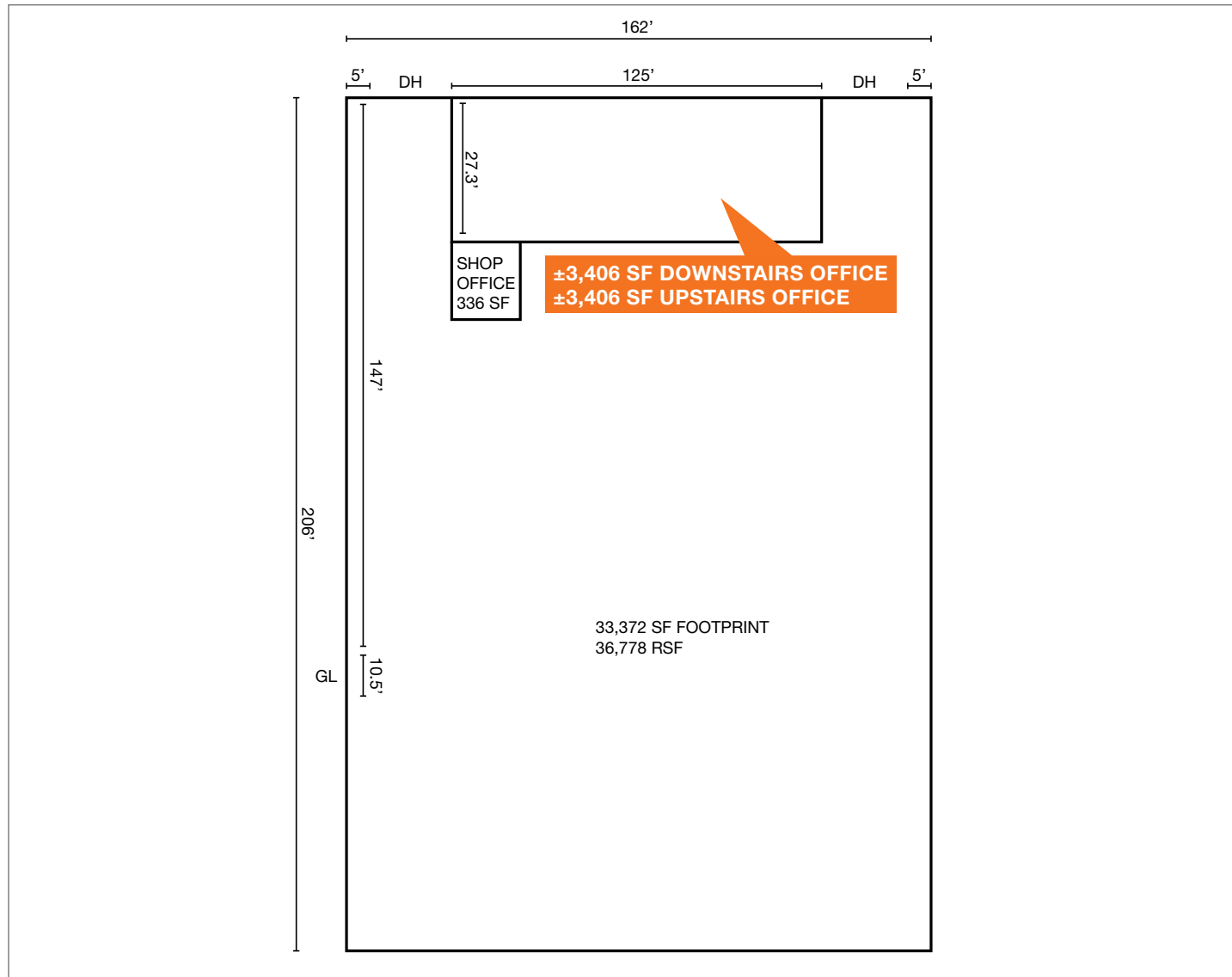
Mike Catt
206.248.7309
mcatt@kiddermathews.com



FOR SALE

8655 South 208th Street

FLOOR PLAN



CONTACT

Mike Newton
206.248.7311
mnewton@kiddermathews.com

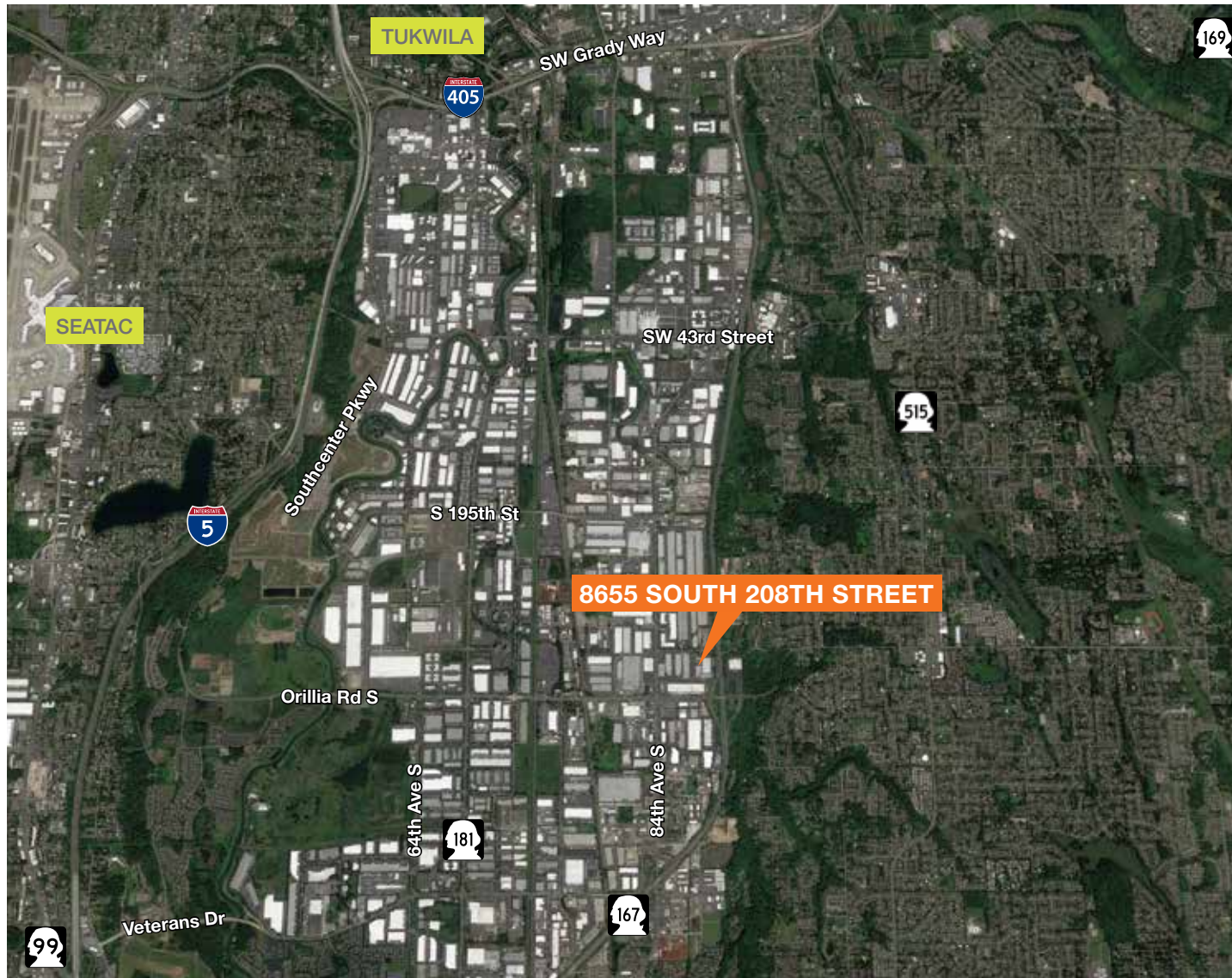
Mike Catt
206.248.7309
mcatt@kiddermathews.com



FOR SALE

8655 South 208th Street

REGIONAL AERIAL



CONTACT

Mike Newton
206.248.7311
mnewton@kiddermathews.com

Mike Catt
206.248.7309
mcatt@kiddermathews.com

