



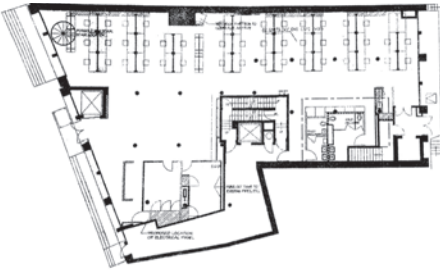
155

FRANKLIN STREET

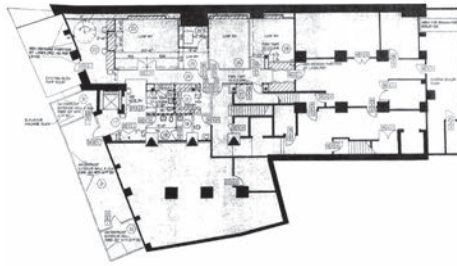
Between Hudson & Varick

 **SINVIN**  
COMMERCIAL REAL ESTATE & ADVISORY

## GROUND



## LOWER



## NOTES:

- Dramatic Tribeca block-through retail space with two entrances and over 110' of combined frontage
- Selling lower level
- Currently built out as office with largely open floor plan, four bathrooms, two kitchen pantries, and five conference rooms
- Private elevator between levels possible
- ADA accessible
- 375' from the 1-train subway station

## DETAILS:

Ground.....**6,000 SF**

Lower.....**2,500 SF**

Frontage.....**110'**  
(77' Franklin, 33' Leonard)

Term.....**Negotiable**

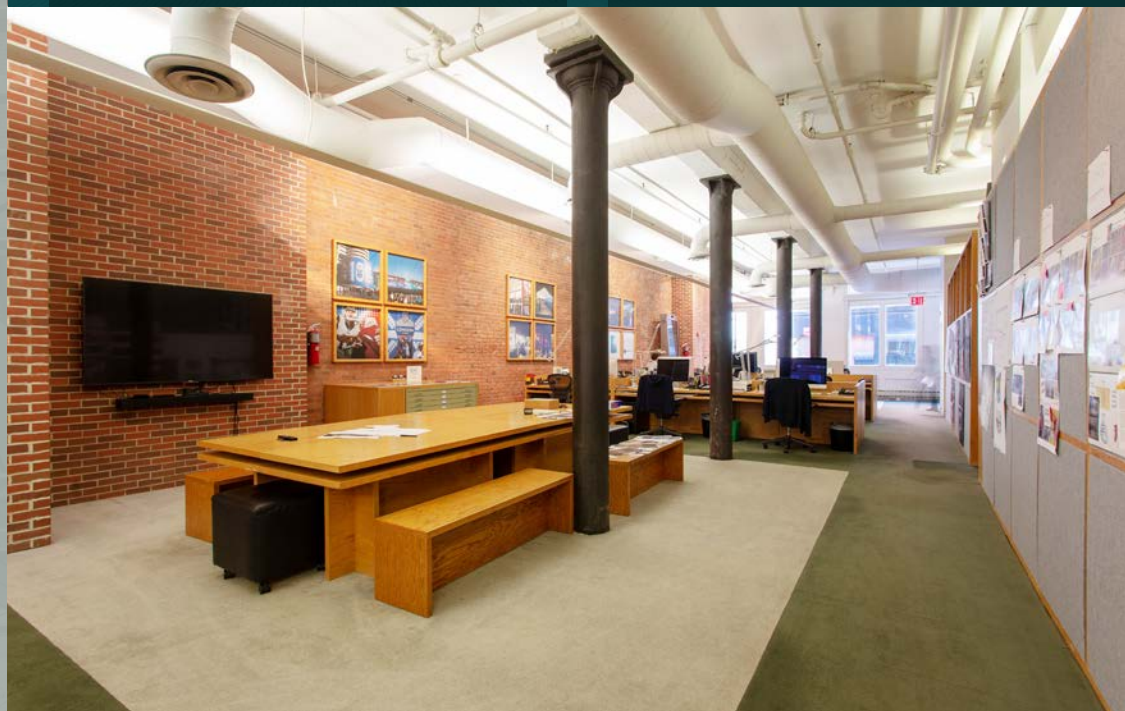
Possession...**6/1/2020**

Asking Rent.....**Inquire**

## NEIGHBORS INCLUDE:

- Thom Browne
- Patron Of The New
- Urban Archaeology
- Gurhan
- Douglas Elliman
- Shinola
- Rag & Bone
- Maman Cafe
- Gotan
- Terra Restaurant
- Issey Miyake
- Tutto il Giorno
- Steven Alan
- The Roxy Hotel
- Citigroup

**SINVIN**  
COMMERCIAL REAL ESTATE & ADVISORY



# 155

FRANKLIN STREET



PLEASE CONTACT:

**Christopher Owles**  
212.604.9002  
chris@sinvin.com

**Peter Weisman**  
646.673.8782  
peter@sinvin.com



Lower Level