



## 4225 MAYFIELD ROAD

SOUTH EUCLID, OHIO

### THE PROPERTY

- Professional medical and office spaces for lease
- First floor space available
- Second floor can be single tenant or can be divided
- Ideally located at the corner of Mayfield Road and South Belvoir Road , a major intersection
- Ample parking at rear of building
- Furnished space available if desired
- Competitive rental rates



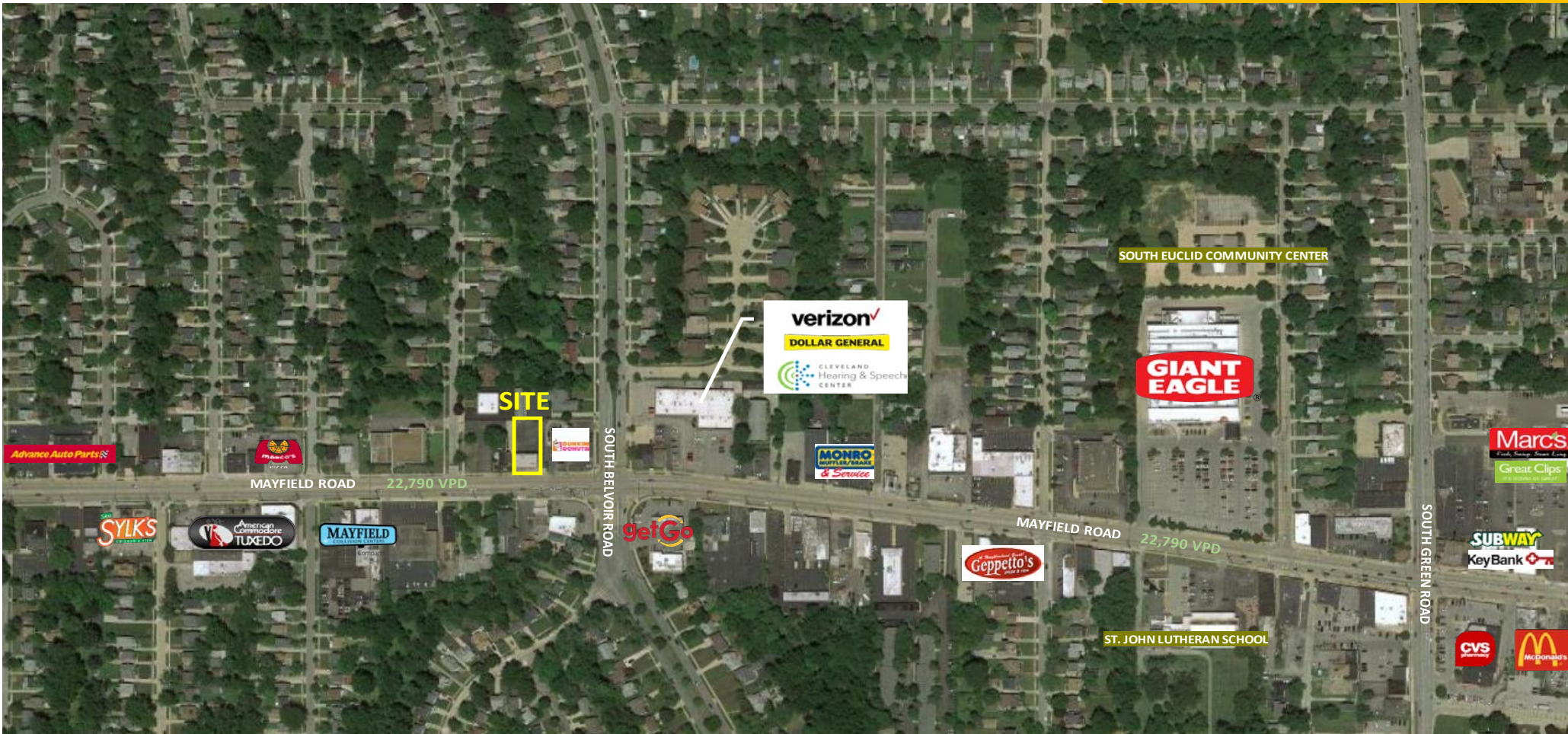
#### Contact Agent:

Chuck Essreg (216) 514-1400 ext 105 [cessreg@kowitzrealestate.com](mailto:cessreg@kowitzrealestate.com)

Kowit & Company Real Estate Group | 216.514.1400 | [www.kowitzrealestate.com](http://www.kowitzrealestate.com)

# AERIAL

4225 MAYFIELD ROAD, SOUTH EUCLID, OHIO



**Contact Agent:**

Chuck Essreg (216) 514-1400 ext 105 [cessreg@kowitzrealstate.com](mailto:cessreg@kowitzrealstate.com)  
Kowit & Company Real Estate Group | 216.514.1400 | [www.kowitzrealstate.com](http://www.kowitzrealstate.com)

# DEMOGRAPHICS

4225 MAYFIELD ROAD, SOUTH EUCLID, OHIO

4225 Mayfield Rd		3 mi radius	5 mi radius	7 mi radius
South Euclid, OH 44121				
POPULATION	2019 Estimated Population	121,330	305,602	453,094
	2024 Projected Population	118,126	306,106	457,339
	2010 Census Population	127,506	316,357	469,991
	2000 Census Population	141,713	365,162	554,215
	Projected Annual Growth 2019 to 2024	-0.5%	-	0.2%
	Historical Annual Growth 2000 to 2019	-0.8%	-0.9%	-1.0%
	2019 Median Age	40.7	40.1	39.8
HOUSEHOLDS	2019 Estimated Households	55,045	142,153	207,304
	2024 Projected Households	53,931	142,911	210,088
	2010 Census Households	54,579	138,597	202,598
	2000 Census Households	58,509	153,018	226,577
	Projected Annual Growth 2019 to 2024	-0.4%	0.1%	0.3%
	Historical Annual Growth 2000 to 2019	-0.3%	-0.4%	-0.4%
RACE AND ETHNICITY	2019 Estimated White	51.5%	41.1%	35.2%
	2019 Estimated Black or African American	41.9%	51.8%	58.6%
	2019 Estimated Asian or Pacific Islander	3.4%	4.2%	3.3%
	2019 Estimated American Indian or Native Alaskan	0.1%	0.1%	0.2%
	2019 Estimated Other Races	3.1%	2.7%	2.7%
	2019 Estimated Hispanic	2.3%	2.1%	2.0%
INCOME	2019 Estimated Average Household Income	\$83,399	\$74,629	\$68,272
	2019 Estimated Median Household Income	\$65,870	\$57,575	\$52,604
	2019 Estimated Per Capita Income	\$38,038	\$34,914	\$31,449
EDUCATION (AGE 25+)	2019 Estimated Elementary (Grade Level 0 to 8)	1.8%	2.3%	2.7%
	2019 Estimated Some High School (Grade Level 9 to 11)	4.9%	6.7%	8.2%
	2019 Estimated High School Graduate	19.9%	23.4%	26.1%
	2019 Estimated Some College	21.5%	21.6%	22.7%
	2019 Estimated Associates Degree Only	7.2%	7.1%	7.2%
	2019 Estimated Bachelors Degree Only	22.9%	19.3%	17.2%
2019 Estimated Graduate Degree	21.9%	19.5%	15.9%	
BUSINESS	2019 Estimated Total Businesses	3,879	13,901	19,482
	2019 Estimated Total Employees	42,060	263,910	379,595
	2019 Estimated Employee Population per Business	10.8	19.0	19.5
	2019 Estimated Residential Population per Business	31.3	22.0	23.3

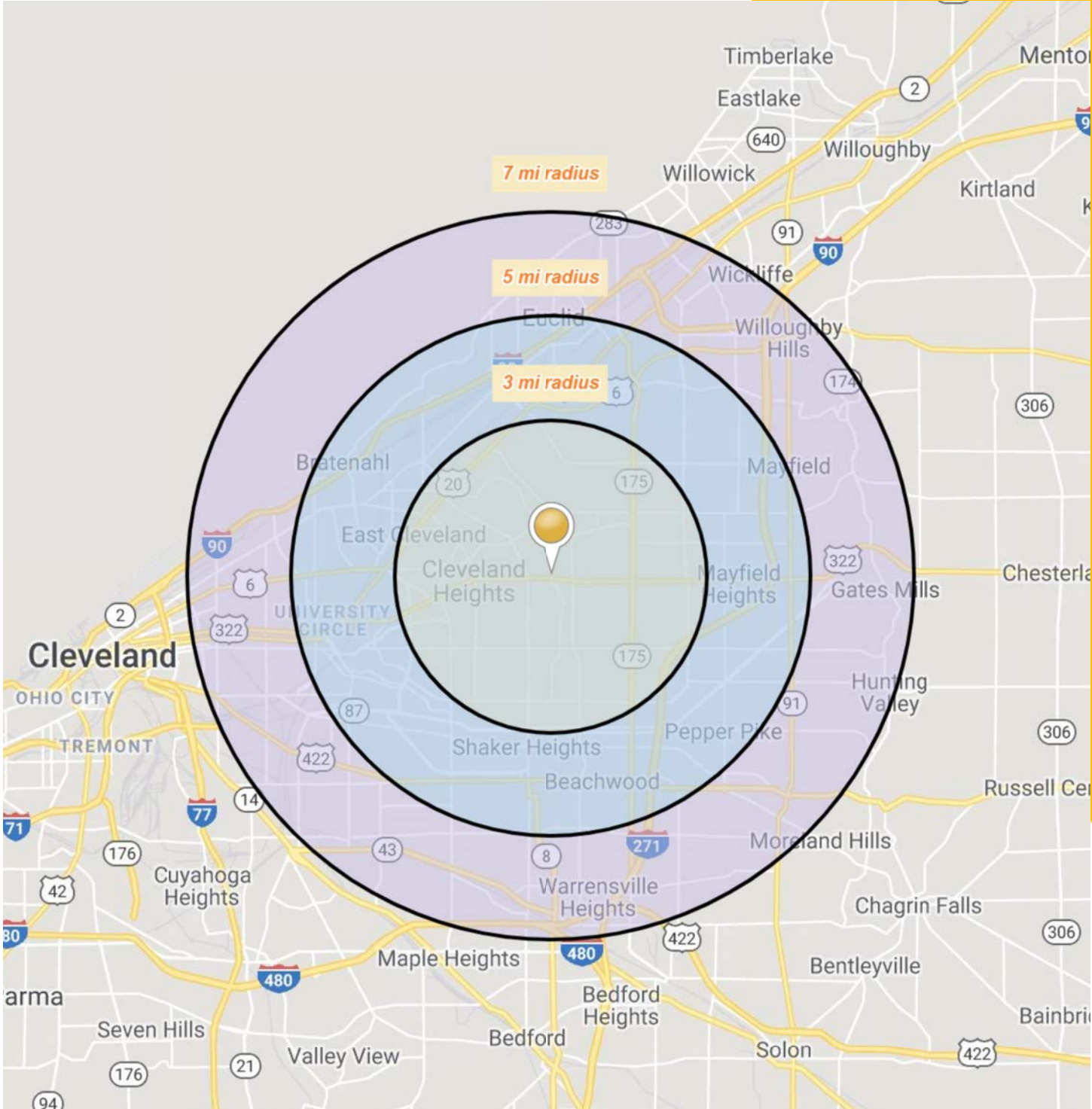
### Contact Agent:

 Chuck Essreg (216) 514-1400 ext 105 [cessreg@kowitzrealestate.com](mailto:cessreg@kowitzrealestate.com)

 Kowit & Company Real Estate Group | 216.514.1400 | [www.kowitzrealestate.com](http://www.kowitzrealestate.com)

# AREA MAP

4225 MAYFIELD ROAD, SOUTH EUCLID, OHIO



**Contact Agent:**

Chuck Essreg (216) 514-1400 ext 105 [cessreg@kowitzrealestate.com](mailto:cessreg@kowitzrealestate.com)

Kowit & Company Real Estate Group | 216.514.1400 | [www.kowitzrealestate.com](http://www.kowitzrealestate.com)