

LAND FOR SALE



11457 W. I-70 Frontage Road N.
Wheat Ridge, CO 80033

marcumcommercial.com

Insta: @marcumcommercial

Loopnet / CoStar / Catylist / Crexi

SCOTT MARCUM

scott@marcumcommercial.com

O:303.403.1333

C:303.437.5590

MAXWELL MARCUM

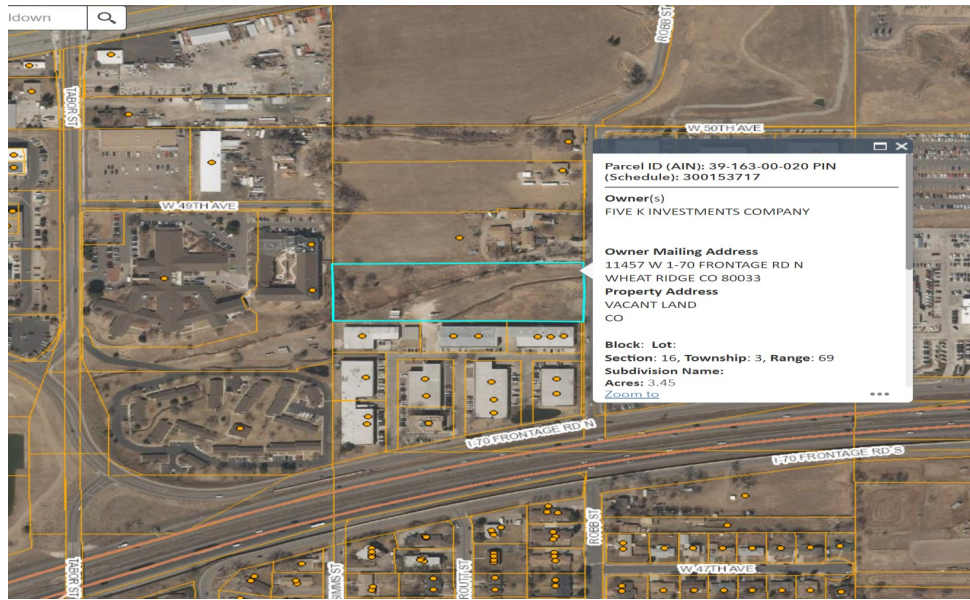
maxwell@marcumcommercial.com

O:303.403.1333

C:303.915.7483

SALES AND LEASING:

RETAIL, OFFICE, LAND
& INDUSTRIAL



I-70 Frontage Rd. North & Robb St. Wheat Ridge, CO 80033

- **Listing Price:** \$995,000
- **Price per Sq. Ft.:** \$6.62
- **Lot Size (Acres):** 3.45 Acres
- **Lot Size (SF):** 150,282
- **Current Zoning:** A-2 City of Wheat Ridge
- **LOCATION:** North of I-70 between Ward Road & Kipling St. The newly developed and operating G-Line is less than a quarter mile away.
- **VISIBLE FROM I-70 East & West Bound traffic.**
- **Surrounded by Industrial Development**
- **OPPORTUNITY ZONE PARCEL**



No warranty or representation is made as to the accuracy of the foregoing information.
Terms of sale or lease and availability are subject to change or withdrawal without notice.