



FOR LEASE

# Oakhurst Office Park

1851 CENTRAL PL S | KENT, WA



## ±2,503 Square Feet Available

**NEW SIDING** installed along with several cosmetic upgrades

**COMMON AREA** break room and showers in building

**ACCESS** to walking trail on Green River, excellent parking 6/1,000

**PROFESSIONAL** management on-site

**GREAT** visibility, ideal location with easy access to Highway 167

**POTENTIAL** for exterior building signage, Comcast service available

**LEASE RATE** \$18.00 PSF, full service

**JOEL SHABEL**

253.722.1406

[joel.shabel@kidder.com](mailto:joel.shabel@kidder.com)

**BRIAN CLAPP**

206.248.7316

[brian.clapp@kidder.com](mailto:brian.clapp@kidder.com)

[KIDDER.COM](http://KIDDER.COM)

This information supplied herein is from sources we deem reliable. It is provided without any representation, warranty, or guarantee, expressed or implied as to its accuracy. Prospective Buyer or Tenant should conduct an independent investigation and verification of all matters deemed to be material, including, but not limited to, statements of income and expenses. Consult your attorney, accountant, or other professional advisor.

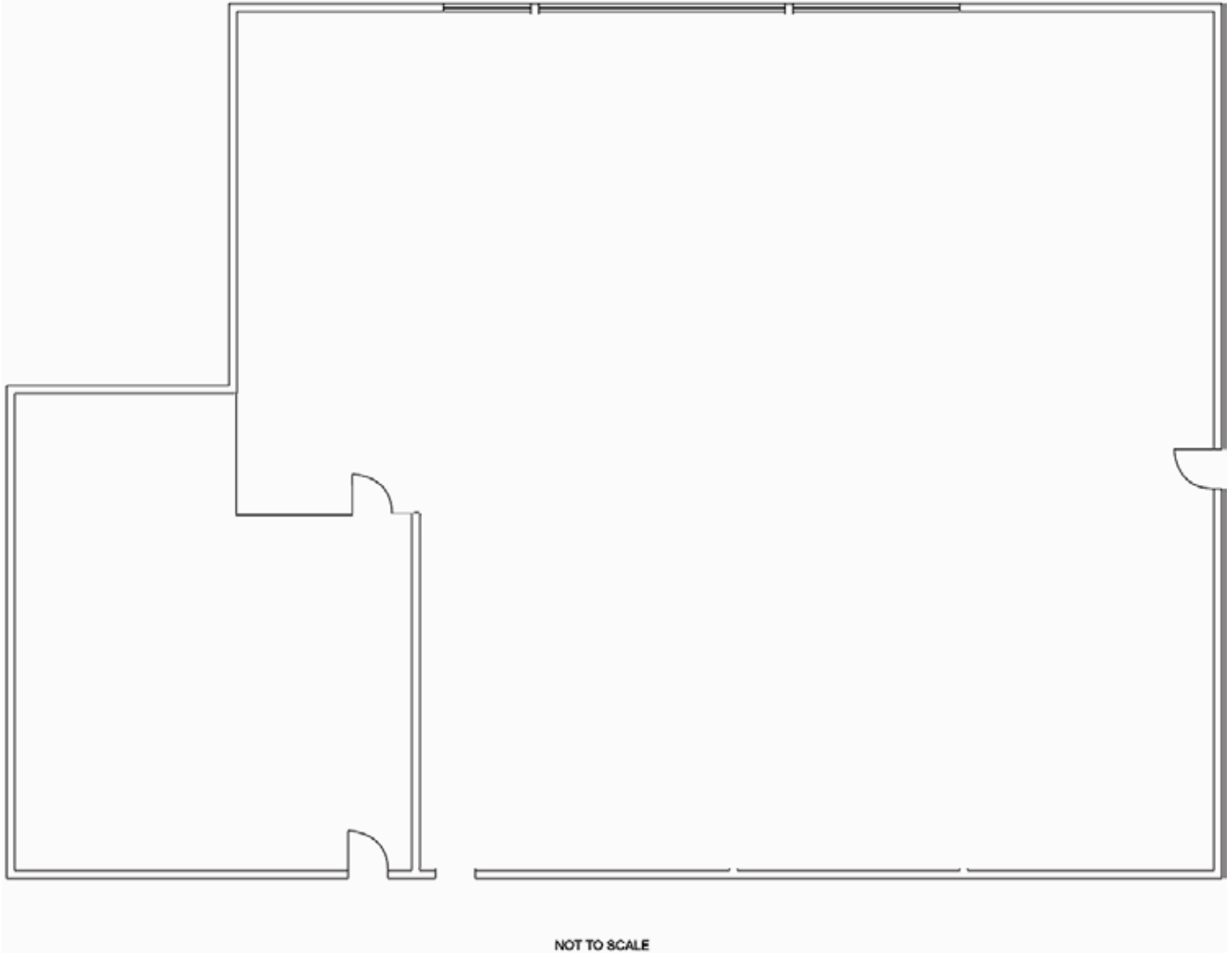
**Kidder  
Mathews**

**FOR LEASE**

# Oakhurst Office Park

1851 CENTRAL PL S | KENT, WA

## Second Floor | Suite 211 | ±2,503 SF



**JOEL SHABEL**  
253.722.1406  
[joel.shabel@kidder.com](mailto:joel.shabel@kidder.com)

**BRIAN CLAPP**  
206.248.7316  
[brian.clapp@kidder.com](mailto:brian.clapp@kidder.com)

**KIDDER.COM**

This information supplied herein is from sources we deem reliable. It is provided without any representation, warranty, or guarantee, expressed or implied as to its accuracy. Prospective Buyer or Tenant should conduct an independent investigation and verification of all matters deemed to be material, including, but not limited to, statements of income and expenses. Consult your attorney, accountant, or other professional advisor.



FOR LEASE

# Oakhurst Office Park

1851 CENTRAL PL S | KENT, WA



[KIDDER.COM](http://KIDDER.COM)

This information supplied herein is from sources we deem reliable. It is provided without any representation, warranty, or guarantee, expressed or implied as to its accuracy. Prospective Buyer or Tenant should conduct an independent investigation and verification of all matters deemed to be material, including, but not limited to, statements of income and expenses. Consult your attorney, accountant, or other professional advisor.



FOR LEASE

# Oakhurst Office Park

1851 CENTRAL PL S | KENT, WA



[KIDDER.COM](http://KIDDER.COM)

This information supplied herein is from sources we deem reliable. It is provided without any representation, warranty, or guarantee, expressed or implied as to its accuracy. Prospective Buyer or Tenant should conduct an independent investigation and verification of all matters deemed to be material, including, but not limited to, statements of income and expenses. Consult your attorney, accountant, or other professional advisor.

 **Kidder  
Mathews**

FOR LEASE

# Oakhurst Office Park

1851 CENTRAL PL S | KENT, WA



[KIDDER.COM](http://KIDDER.COM)

This information supplied herein is from sources we deem reliable. It is provided without any representation, warranty, or guarantee, expressed or implied as to its accuracy. Prospective Buyer or Tenant should conduct an independent investigation and verification of all matters deemed to be material, including, but not limited to, statements of income and expenses. Consult your attorney, accountant, or other professional advisor.

 **Kidder  
Mathews**