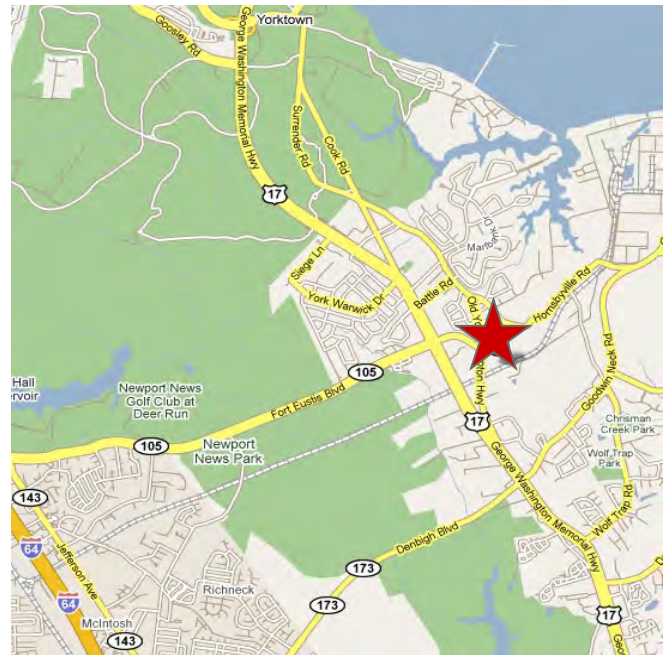




Property Features

- Approximately 2,308 SF available
- Approximately 852 SF office and 1,456 SF warehouse
- Lease Rate: \$11.00/SF
- Landlord pays CAM charges, real estate taxes and building insurance
- Tenant pays utilities, phone/internet and janitorial
- Clear span warehouse
- 24' clear height
- 3 phase power
- Grade level 12' x 12' overhead doors
- Located within 182 acre commerce park
- Just off four lane US 17 & Ft. Eustis Blvd.
- Minutes to I-64



For more information, contact:

ANDY DALLAS, CCIM, SIOR
First Vice President
757 873 3661
andy.dallas@thalhimer.com

One BayPort Way, Suite 100
Newport News, VA 23606
www.thalhimer.com



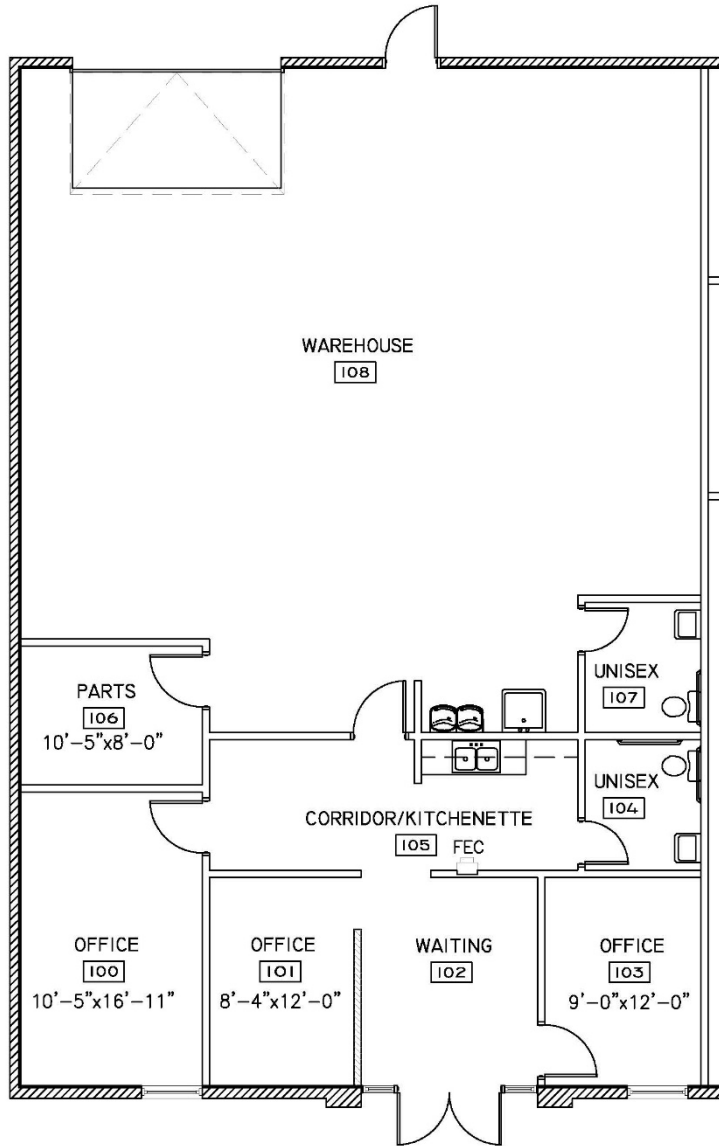
For more information, contact:

ANDY DALLAS, CCIM, SIOR
First Vice President
757 873 3661
andy.dallas@thalhimer.com

One BayPort Way, Suite 100
Newport News, VA 23606
www.thalhimer.com

Independently Owned and Operated / A Member of the Cushman & Wakefield Alliance

Cushman & Wakefield / Thalhimer © 2015. No warranty or representation, express or implied, is made to the accuracy or completeness of the information contained herein, and same is submitted subject to errors, omissions, change of price, rental or other conditions, withdrawal without notice, and to any special listing conditions imposed by the property owner(s). As applicable, we make no representation as to the condition of the property (or properties) in question.



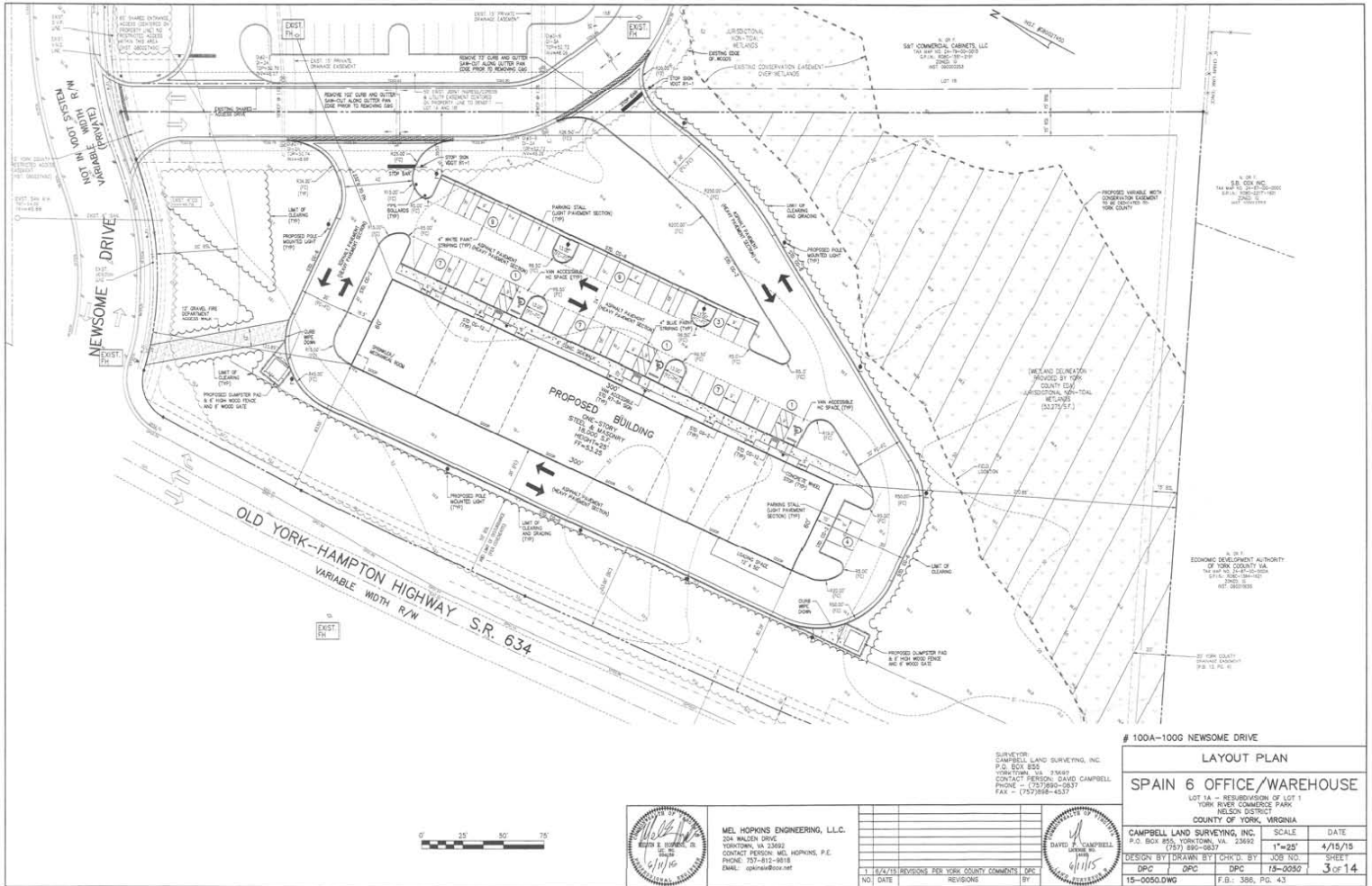
SK-01
 MILLERS
 100 NEWSOME DRIVE, SUITE A
 YORKTOWN, VIRGINIA 23692
 OCTOBER 1, 2019
 NOT TO SCALE

OFFICE AREA: 852 SF
 WAREHOUSE: 1,456 SF
 TOTAL: 2,308 SF

For more information, contact:

ANDY DALLAS, CCIM, SIOR
 First Vice President
 757 873 3661
 andy.dallas@thalhimer.com

One BayPort Way, Suite 100
 Newport News, VA 23606
 www.thalhimer.com



100A-100G NEWSOME DRIVE

LAYOUT PLAN			
SPAIN 6 OFFICE/WAREHOUSE			
LOT 1A - RESUBDIVISION OF LOT 1 YORK RIVER COMMERCE PARK NELSON DISTRICT COUNTY OF YORK, VIRGINIA			
CAMPBELL LAND SURVEYING, INC.	SCALE	DATE	
P.O. BOX 855, YORKTOWN, VA 23692 (757) 860-0837	1"=25'	4/15/15	
DESIGN BY: DPC	DRAWN BY: CHR. D. BY	JOB NO.	SHEET
DPC	DPC	TS-0557	3 of 14
TS-0550.DWG	F.B. - 306, P.G. 43		

MEL HOPKINS ENGINEERING, L.L.C.
 204 WALDEN DRIVE
 YORKTOWN, VA 23692
 CONTACT PERSON: MEL HOPKINS, P.E.
 PHONE: 757-811-9818
 EMAIL: mhop@melh.com

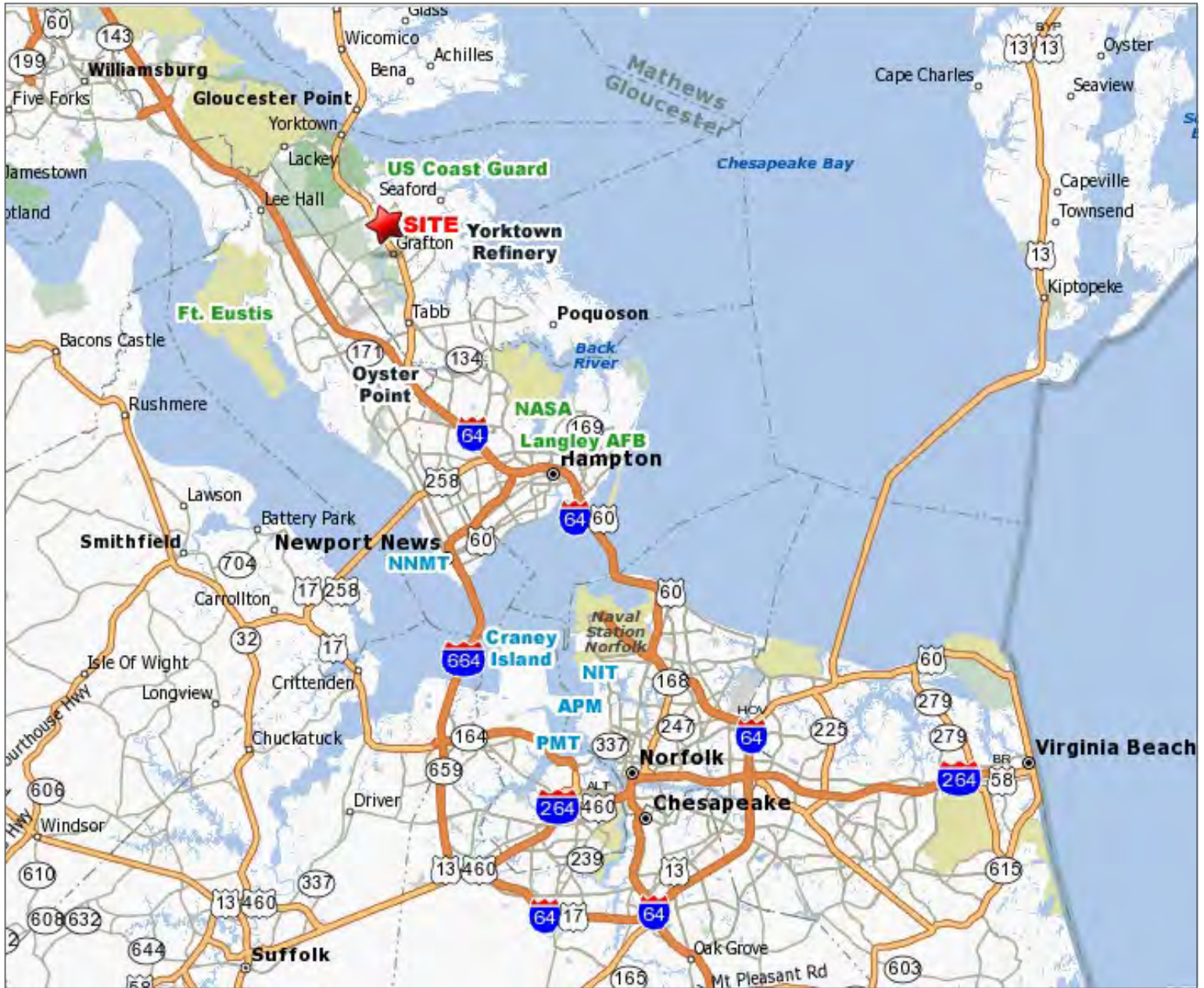
SURVEYOR
 CAMPBELL LAND SURVEYING, INC.
 P.O. BOX 855
 YORKTOWN, VA 23692
 CONTACT PERSON: DAVID CAMPBELL
 PHONE: (757) 860-0837
 FAX: (757) 868-6537



For more information, contact:

ANDY DALLAS, CCIM, SIOR
 First Vice President
 757 873 3661
 andy.dallas@thalhimer.com

One BayPort Way, Suite 100
 Newport News, VA 23606
 www.thalhimer.com



For more information, contact:

ANDY DALLAS, CCIM, SIOR
First Vice President
757 873 3661
andy.dallas@thalhimer.com

One BayPort Way, Suite 100
Newport News, VA 23606
www.thalhimer.com