

# General Office for Lease \$22.75 F/S

Hayden Park - 10617 N. Hayden Road | Scottsdale, AZ 85260



## Property Details

- S-R Zoning, City of Scottsdale
- Located on the NEC of Shea Blvd & Hayden Rd
- Built in 1986
- Medical / Dental Possibilities
- Suite B-100, ±2,224 SF - End Suite
- New "Spec" Suite Includes: Reception Area, Large Conference, 6-7 Private Offices, 1 Interior Restroom (Building Restrooms also available), IT/Storage Room, Kitchen w/Sink, Outdoor Patio Area with Large Grass Area
- Floor Plan Attached

**Craig Trbovich**  
D: 480.522.2799  
M: 602.549.4676  
ctrbovich@cpiaz.com

**Ron Schooler**  
D: 480.522.2770  
M: 602.469.3750  
rschooler@cpiaz.com



**COMMERCIAL PROPERTIES INC.**

Locally Owned. Globally Connected. CRFAC International

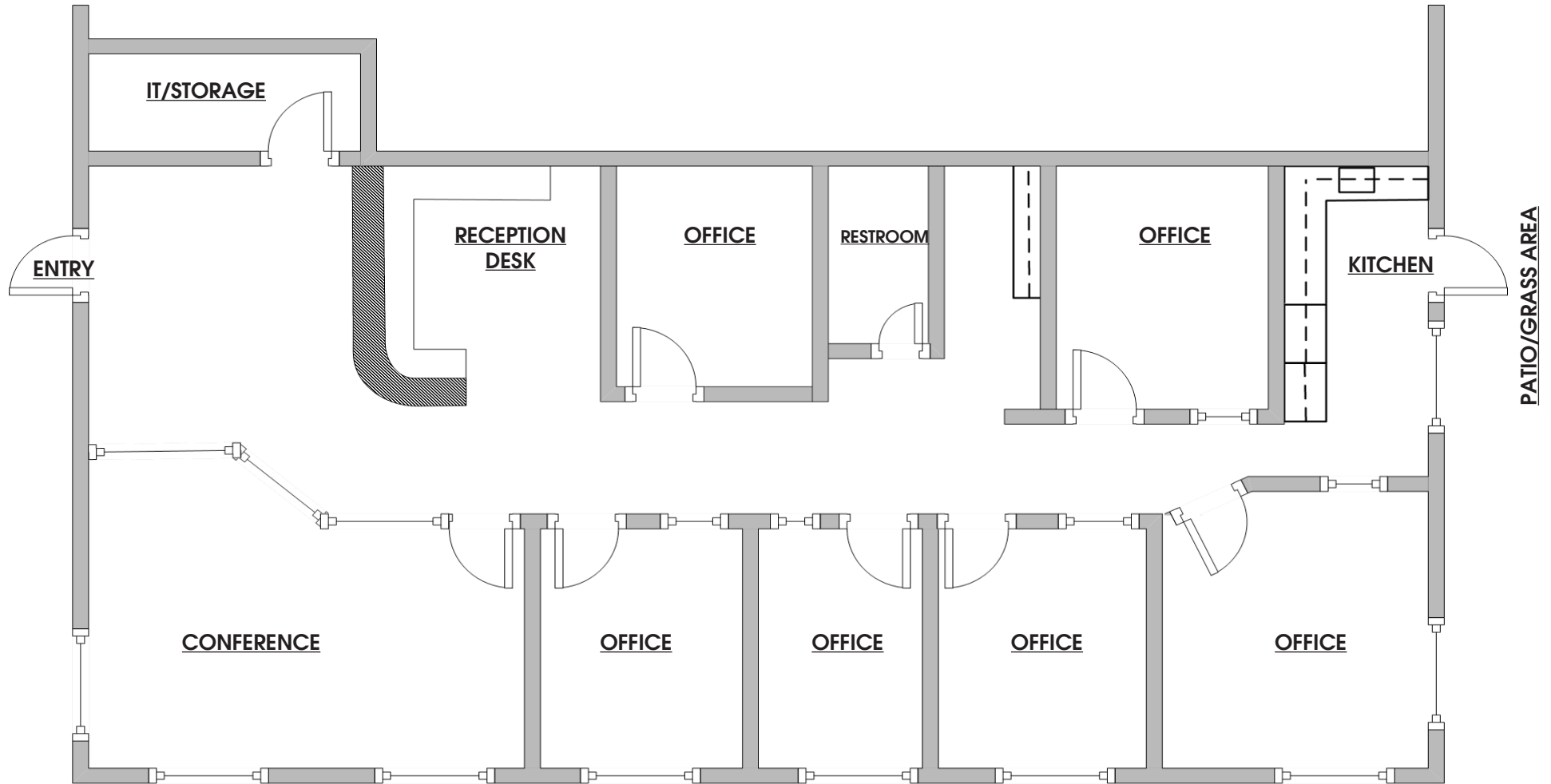
TEMPE: 2323 W. University Drive, Tempe, AZ 85281 | 480.966.2301  
SCOTTSDALE: 8777 N. Gainey Center Dr., Suite 245, Scottsdale, AZ 85258 | www.cpiaz.com

# General Office for Lease \$22.75 F/S

Hayden Park - 10617 N. Hayden Road | Scottsdale, AZ 85260

Suite B-100, ±2,224 SF

Consisting of Reception, 6-7 Private Offices, Conference Room, Copy Area, Restroom, Storage, IT Area, Outdoor Patio Area.



Note: Approximate Office/Premises measurements not to scale.

**Craig Trbovich**  
D: 480.522.2799  
M: 602.549.4676  
ctrbovich@cpiaz.com

**Ron Schooler**  
D: 480.522.2770  
M: 602.469.3750  
rschooler@cpiaz.com



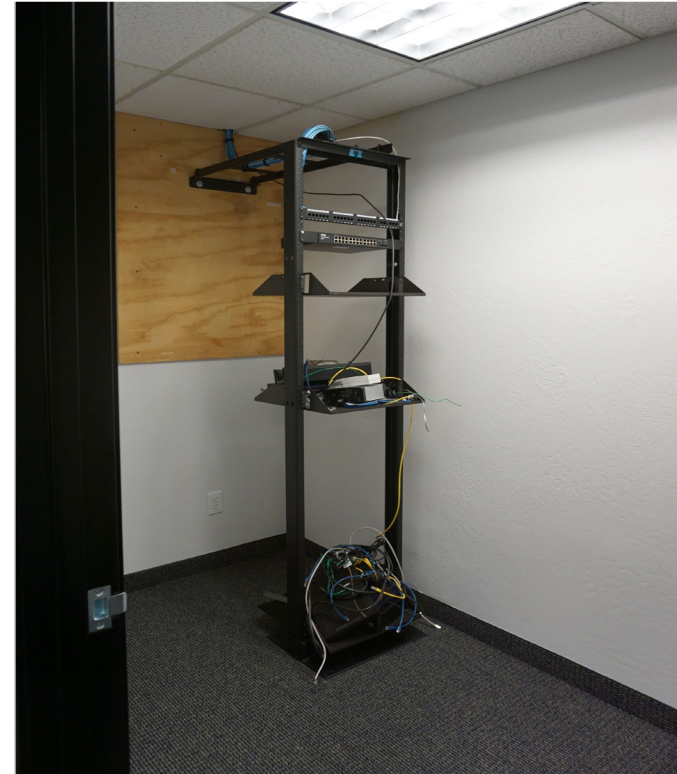
**COMMERCIAL PROPERTIES INC.**

Locally Owned. Globally Connected. CRFAC International

TEMPE: 2323 W. University Drive, Tempe, AZ 85281 | 480.966.2301  
SCOTTSDALE: 8777 N. Gainey Center Dr., Suite 245, Scottsdale, AZ 85258 | www.cpiplaz.com

# General Office for Lease \$22.75 F/S

Hayden Park - 10617 N. Hayden Road | Scottsdale, AZ 85260



**Craig Trbovich**  
D: 480.522.2799  
M: 602.549.4676  
ctrbovich@cpi.az.com

**Ron Schooler**  
D: 480.522.2770  
M: 602.469.3750  
rschooler@cpi.az.com

 **COMMERCIAL PROPERTIES INC.**  
Locally Owned, Globally Connected. 

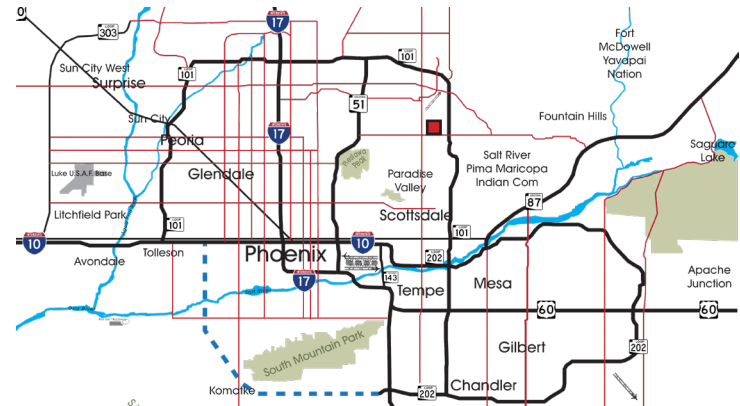
TEMPE: 2323 W. University Drive, Tempe, AZ 85281 | 480.966.2301  
SCOTTSDALE: 8777 N. Gainey Center Dr., Suite 245, Scottsdale, AZ 85258 | www.cpi.az.com

The information contained herein has been obtained from various sources. We have no reason to doubt its accuracy; however, J & J Commercial Properties, Inc. has not verified such information and makes no guarantee, warranty or representation about such information. The prospective buyer or lessee should independently verify all dimensions, specifications, floor plans, and all information prior to the lease or purchase of the property. All offerings are subject to price change, prior sale, lease, or withdrawal from the market without prior notice.

Effective: 07 27 20

# General Office for Lease \$22.75 F/S

Hayden Park - 10617 N. Hayden Road | Scottsdale, AZ 85260



**Craig Trbovich**  
D: 480.522.2799  
M: 602.549.4676  
ctrbovich@cpiaz.com

**Ron Schooler**  
D: 480.522.2770  
M: 602.469.3750  
rschooler@cpiaz.com

 **COMMERCIAL PROPERTIES INC.**  
Locally Owned, Globally Connected. 

TEMPE: 2323 W. University Drive, Tempe, AZ 85281 | 480.966.2301  
SCOTTSDALE: 8777 N. Gainey Center Dr., Suite 245, Scottsdale, AZ 85258 | www.cpiaz.com