

750 HAINES DRIVE

LIBERTY, MO 64068

Charles Small



816.407.5224



816.590.5910



charles@reececommercial.com

**Clay County
Health Dept**

Under Construction
Delivery date is May 2022





750 HAINES DRIVE

15,000
SQUARE FEET



FOR LEASE

**\$16.00 PSF - Includes base
year taxes & Ins.
CAM est \$0.25 PSF**

**INDUSTRIAL/FLEX
WAREHOUSE**

OVERVIEW

Endless possibilities in this brand new warehouse space. Located in the Industrial Park of Oakwood Business Park. Can be used as a gym, event space, assembly warehouse, finish out space to meet your needs. Visibility from I-35 and exterior signage available. Call today for pricing!

HIGHLIGHTS

- 15,000 SF available for lease
- 150' X 100' with 18' ceiling
- One 10' x 12' garage door per 3,000 sqft bay
- 4 per 1000 parking
- No E-Tax in City of Liberty
- Located between Hwy 152 and Hwy 291 interchange of I-35
- C-3 Zoning
- Delivery date is May of 2022

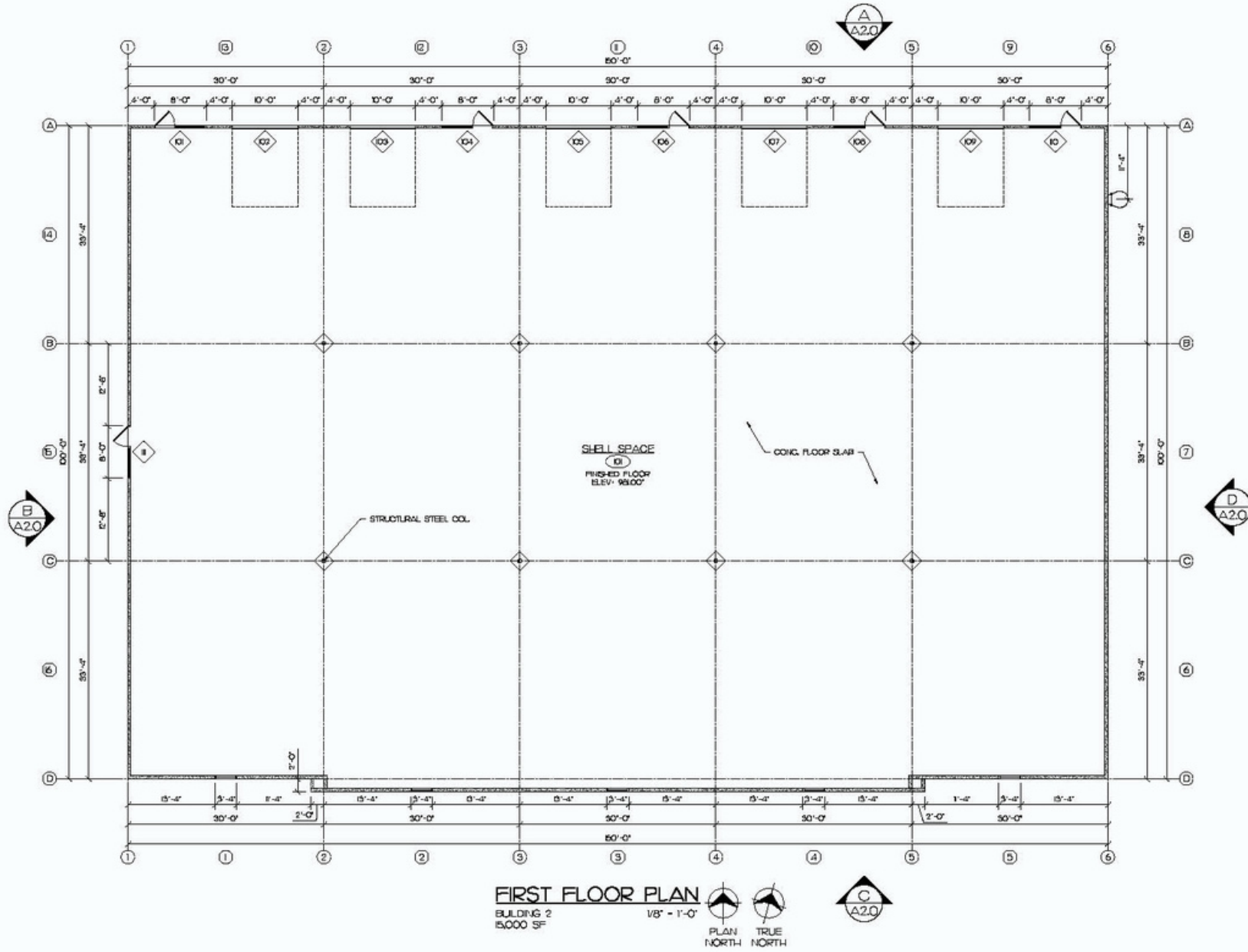


750 HAINES DRIVE





750 HAINES DRIVE

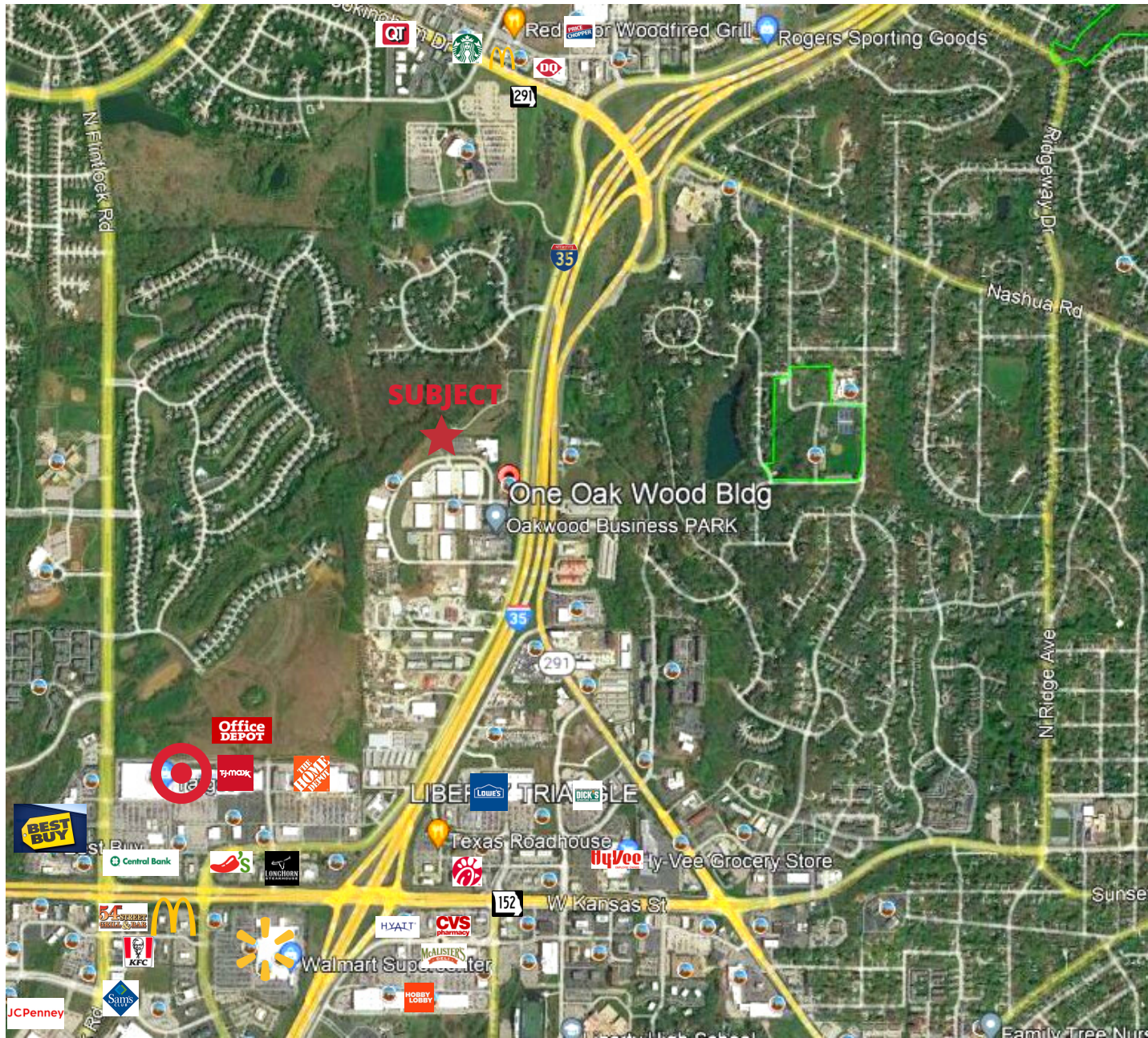


WALL LEGEND

NEW EXTERIOR WALL
ULT-UP CONG. WALL P22#13.5



750 HAINES DRIVE



The Information Above Has Been Obtained From Sources Believed Reliable. While We Do Not Doubt Its Accuracy We Have Not Verified It And Make No Guarantee, Warranty Or Representation About It. It Is Your Responsibility To Independently Confirm Its Accuracy And Completeness. Any Projections, Opinions, Assumptions, Or Estimates Used Are For Example Only And Do Not Represent The Current Or Future Performance Of The Property. You And Your Advisors Should Conduct A Careful, Independent Investigation Of The Property To Determine To Your Satisfaction The Suitability Of The Property For Your Needs. 2022