

Medical
Office
Condo
**FOR
SALE/
LEASE**



1925 E MICHIGAN STREET

ORLANDO, FL | SUITES 201 & 203 | 2,447± SF AVAILABLE



CITE PARTNERS

PROPERTY SPECIFICATIONS

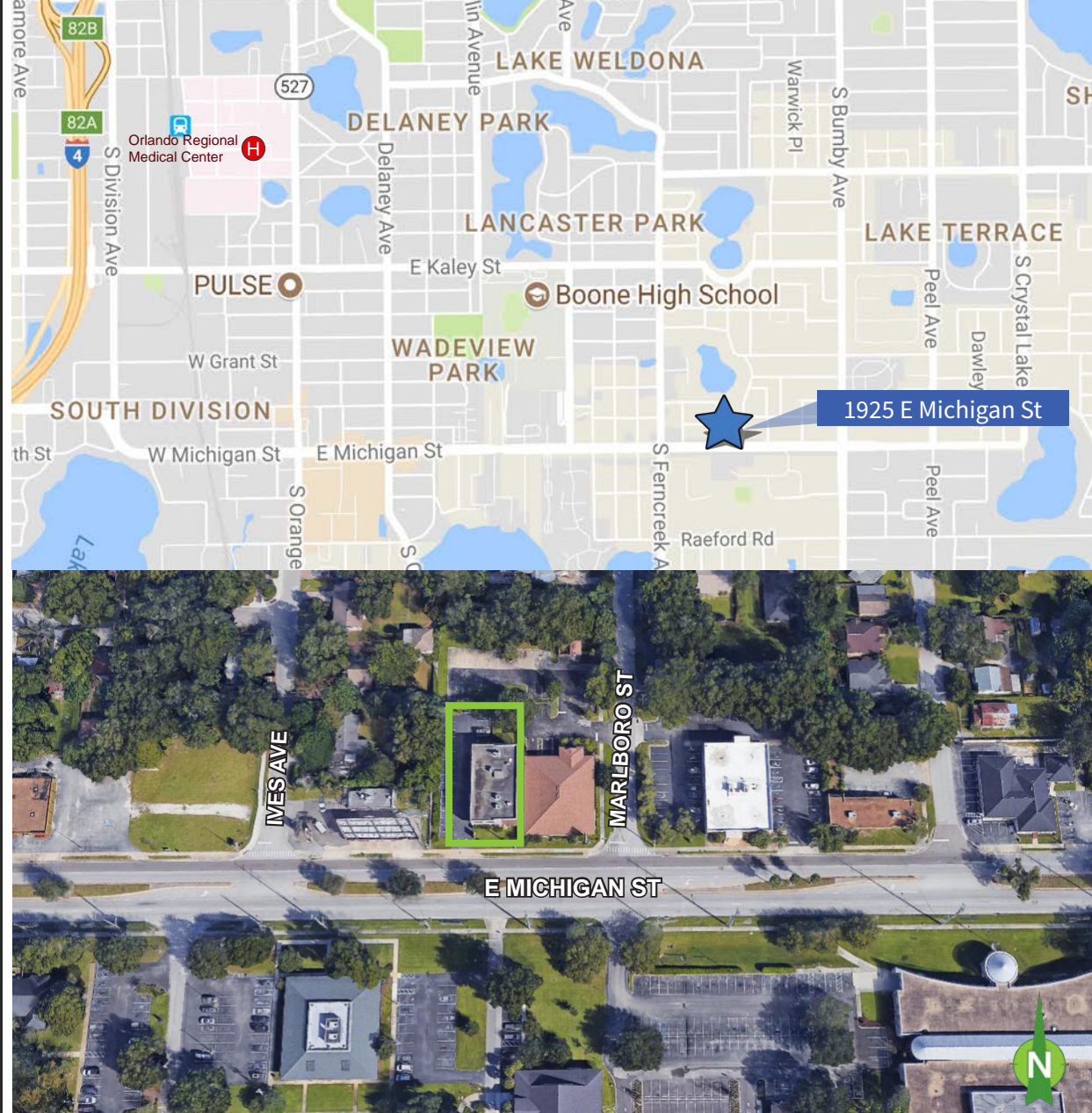
THE PROPERTY

- Units: Suites 201 & 203
- Total Combined: 2,447± RSF
- Second floor space
- Two-story professional/medical office building
- Medical infrastructure in place
- Total Land Size: 16,177± SF (0.37± acres)
- 4 covered, reserved parking spaces
- 6.3/1,000 parking ratio, on site
- Minutes to Orlando Health's main campus and the core of Downtown Orlando
- Access to Interstate 4 and State Road 408
- Zoning: MU-1/T, City of Orlando
- Originally built in 1987
- Signage available on monument sign facing Michigan Avenue
- Annual condo fees: \$3.23/SF

SALE PRICE - REDUCED

- ~~\$500,000.00 (\$204/SF)~~
450,000.00 (\$184/SF)

LEASE RATE: \$19.00/SF NNN



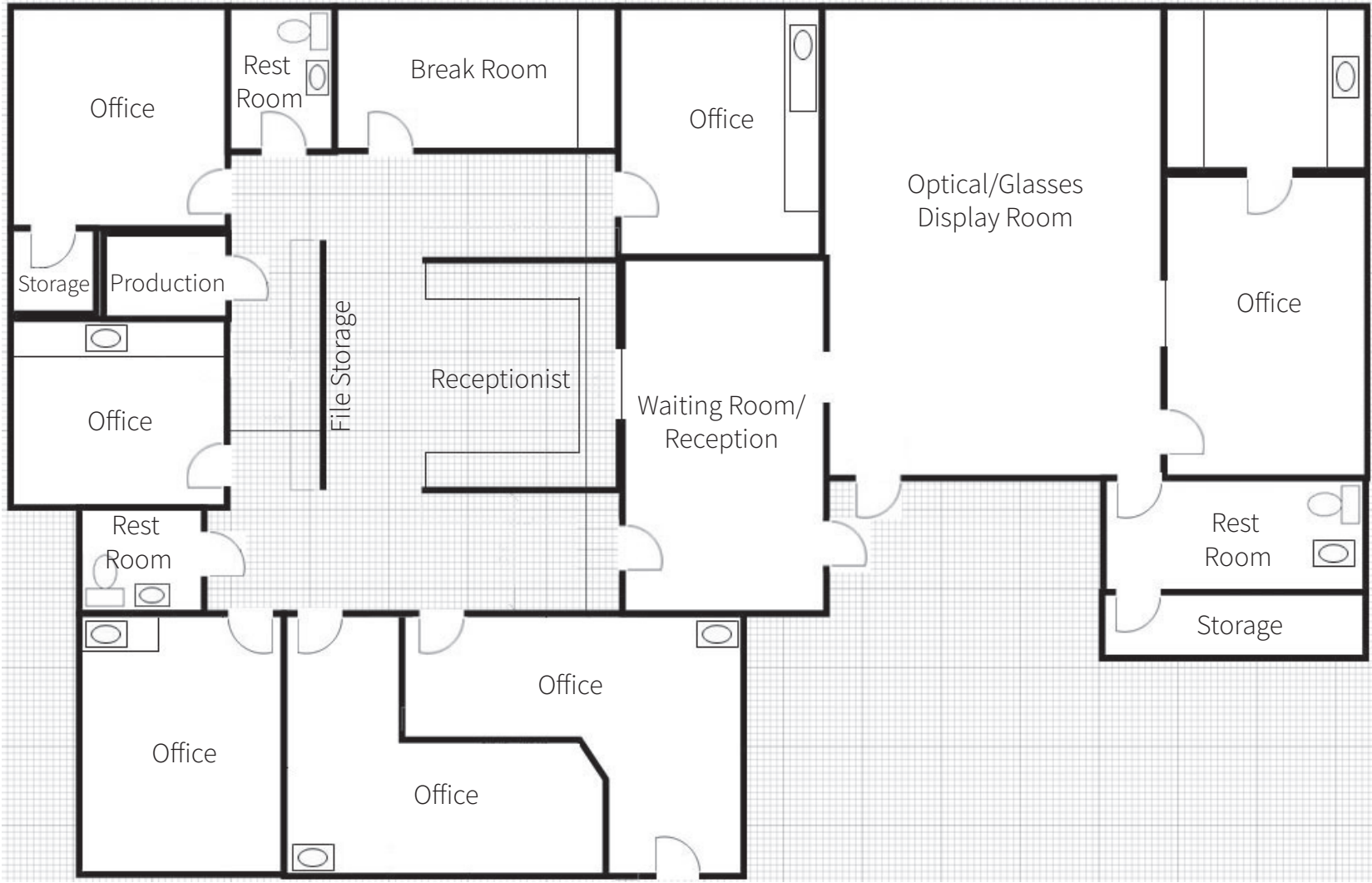
JAMIE BARATI, SIOR, CCIM
Managing Director, Principal
jamie.barati@citepartners.com
407.930.1803

JOHN WORRELL, CCIM
Director, Principal
john.worrell@citepartners.com
407.930.1809

Cite Partners
100 East Pine Street., Suite 200
Orlando, FL 32801
www.citepartners.com

Disclaimer:

This document has been prepared by Cite Partners for advertising and general information only. Cite Partners makes no guarantees, representations or warranties of any kind, expressed or implied, regarding the information including, but not limited to, warranties of content, accuracy and reliability. Any interested party should undertake their own inquiries as to the accuracy of the information. Cite Partners excludes unequivocally all inferred or implied terms, conditions and warranties arising out of this document and excludes all liability for loss and damages arising therefrom. This publication is the copyrighted property of Cite Partners and/or its licensor(s). All rights reserved.



BUILDING PHOTOS

