



Commercial Leasing

2600 Ursulines Ave.
2,000 SF on Ground Floor

EXECUTIVE SUMMARY

Originally constructed in the 1890s, this former corner store site one block off N. Broad underwent a historic renovation and now offers 2,000 SF of NEW ground floor commercial space. Large windows, three entrances, and lots of natural light on a great corner of this thriving neighborhood. Would be ideal for an open office environment, fitness concept, or café.

This historic redevelopment is close to the Lafitte Greenway, Whole Foods, Esplanade Ave, and the former Treme jail, which was recently renovated into the bed and breakfast Inn at the Old Jail.



PROPERTY OVERVIEW

- 2,000 SF of Ground Floor Commercial Space
- Recently renovated former corner store site
- 12' Ceilings
- Corner location between Ursulines Ave and N Dorgenois St
- Located near the Lafitte Greenway, Whole Foods, N Broad St, Parkway Bakery & Tavern and Esplanade Ave.

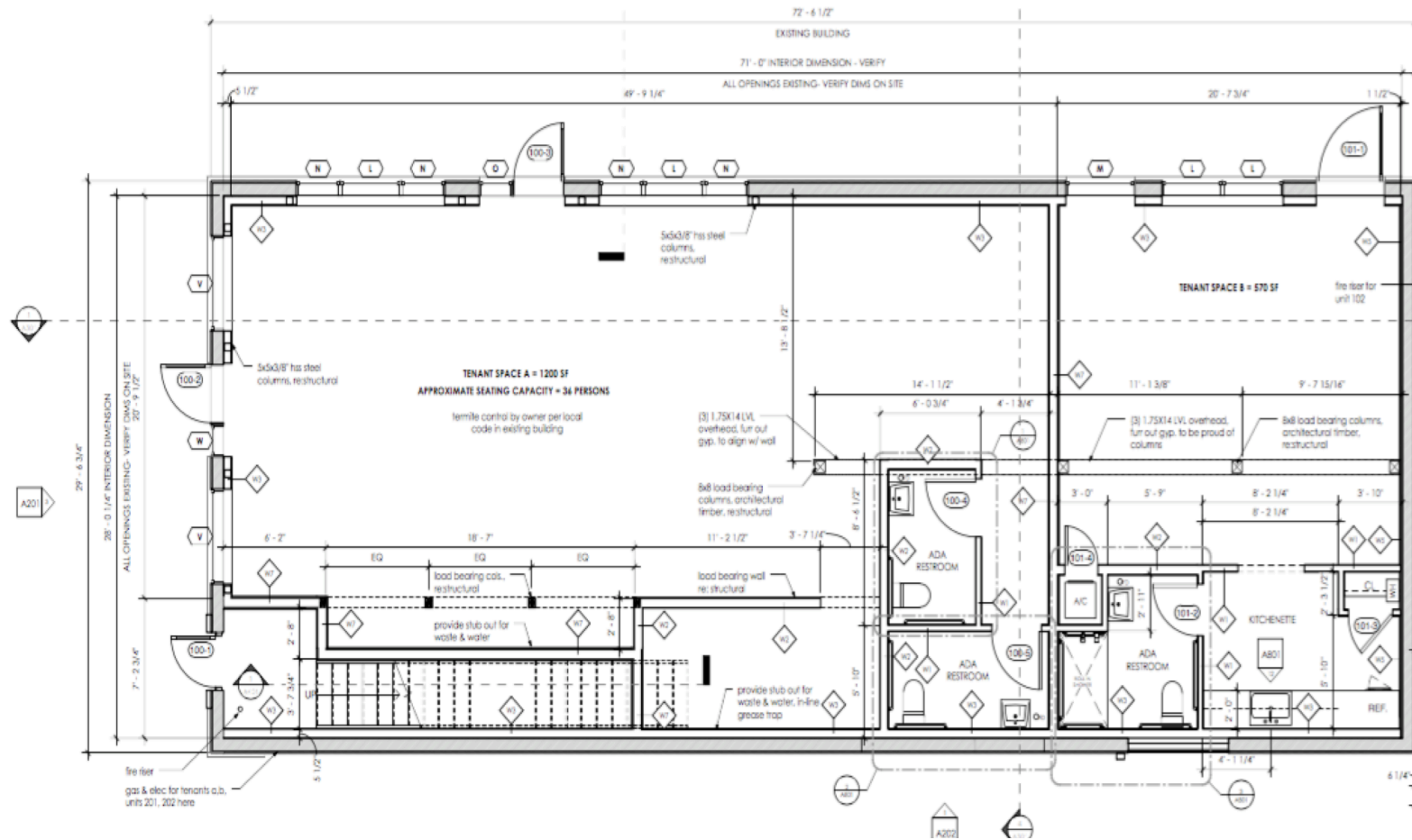
CONTACT

URBAN PROPERTIES REAL ESTATE, LLC , 2727 PRYTANIA ST., NEW ORLEANS, LA, 70130 | (504) 264-6145 | INFO@URBANPROPERTIES.COM

Commercial Leasing

2600 Ursulines Ave.
2,000 SF on Ground Floor

FLOOR PLAN



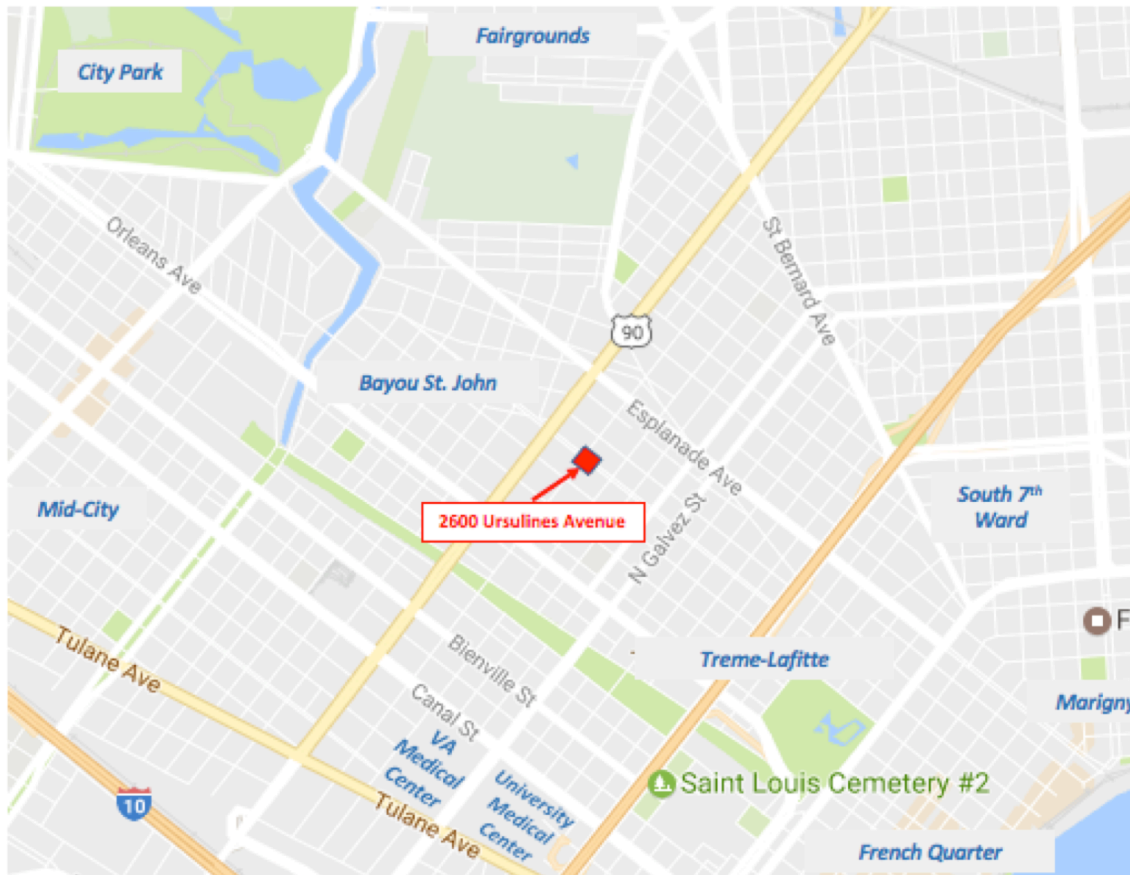
CONTACT



Commercial Leasing

2600 Ursulines Ave.
2,000 SF on Ground Floor

NOTABLE NEARBY



Nearby:

- Lafitte Greenway
- Whole Foods
- Inn at the Old Jail
- Fair Grounds / Jazz Fest
- Dooky Chase
- Willie Mae's Scotch House
- Crescent City Steak House
- Wrong Iron on the Greenway
- Parkway Bakery & Tavern
- Bayou Beer Garden

Demographics:

Proximity:	1 mile	3 miles	5 miles
Total Population:	30,773	188,612	373,723
Median Age:	36.82	35.93	36.83
Households:	12,867	80,612	159,332

CONTACT

URBAN PROPERTIES REAL ESTATE, LLC , 2727 PRYTANIA ST., NEW ORLEANS, LA, 70130 | (504) 264-6145 | INFO@URBANPROPERTIES.COM



Commercial Leasing

2600 Ursulines Ave.
2,000 SF on Ground Floor

CONTACT US



For Additional Information:
CONTACT: TIM THOMPSON
504.913.0462 Cell
Tim@UrbanProperties.com
504.264.6145 Office



For Additional Information:
CONTACT: GENEVIEVE DOUGLASS
504.496.8314 Cell
Genevieve@UrbanProperties.com
504.264.6145 Office



URBAN PROPERTIES REAL ESTATE, LLC



The foregoing is solely for information purposes and is subject to change without notice. Urban Properties Real Estate makes no representations or warranties regarding the properties or information herein including but not limited to all images pertaining to these properties. It is the obligation of each purchaser/lessee to investigate the condition and attributes of the properties and to verify the accuracy of the foregoing information to the extent such purchaser/lessee deems necessary. The foregoing is subject to errors, omissions, changes

CONTACT

URBAN PROPERTIES REAL ESTATE, LLC , 2727 PRYTANIA ST., NEW ORLEANS, LA, 70130 | (504) 264-6145 | INFO@URBANPROPERTIES.COM