



PRIME BURBANK OFFICE SPACES FOR LEASE

2000 W MAGNOLIA BOULEVARD, BURBANK, CA 91506

Commercial Asset Group
1801 Century Park East, Suite 1550
P 310.275.8222
www.cag-re.com
Lic. 01876070

David Ashkenasy
Executive Vice President
P 310.272.7381
E davida@cag-re.com
Lic: 01714442

Ryan Schimel
Director
P 310.272.7384
E ryans@cag-re.com
Lic: 01879511

cag | COMMERCIAL
ASSET GROUP



PRIME BURBANK OFFICE SPACES FOR LEASE

2000 W MAGNOLIA BOULEVARD, BURBANK, CA 91506

Highlights

- Prime Magnolia Corridor Location
- Excellent for Production Companies and/or Traditional Office Tenants
- Recently Remodeled with New Flooring and Paint
- Strong Neighborhood Demographics
- Available for Immediate Occupancy
- Recently Remodeled Common Areas
- Parking: Gated/Private Subterranean Lot

Suite 201

- +/-967 SF
- \$1,950/Month (Modified Gross)
- 2 Private Offices & Open Workspace

Suite 207

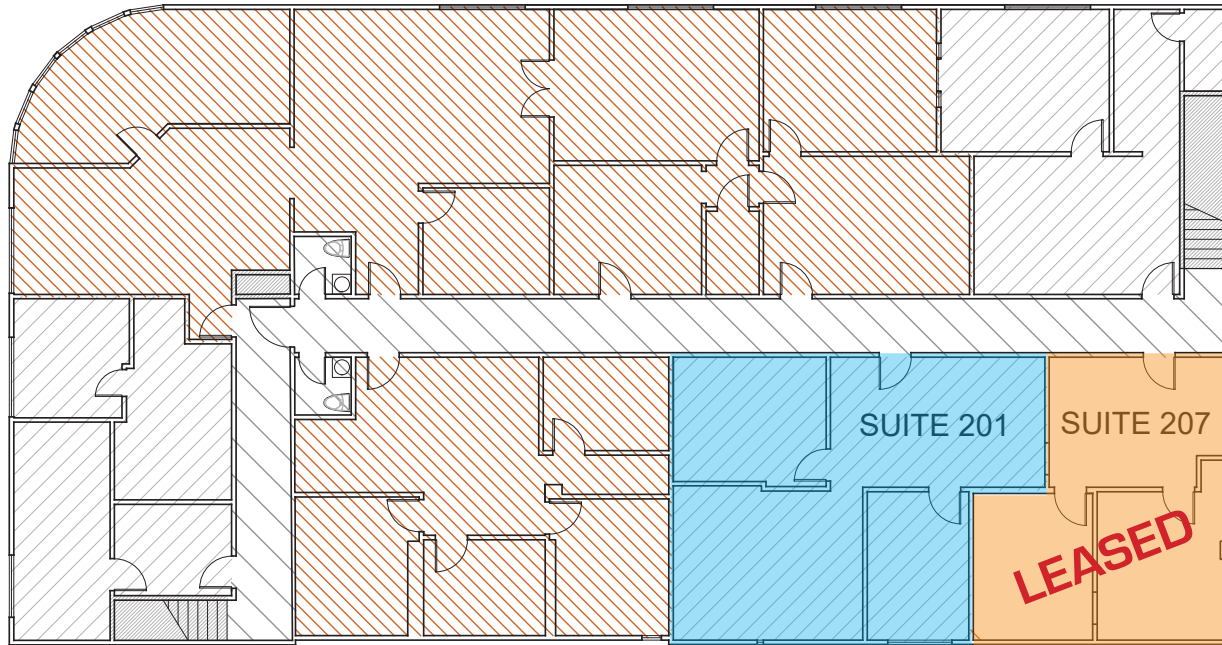
- +/-642 SF
- \$1,500/Month (Modified Gross)
- Waiting Area & Two Private Offices

LEASED

These materials are based on information and content provided by others, which we believe are accurate. No guarantee, warranty or representation is made by Commercial Asset Group, Inc. or its personnel. All interested parties must independently verify accuracy and completeness. As well, any projections, assumptions, opinion, or estimates are used for example only and do not represent the current or future performance of the identified property. Your tax, financial, legal and toxic substance advisors should conduct a careful investigation of the property and its suitability for your needs, including land use limitations. The property is subject to prior lease, sale, change in price, or withdrawal from the market without notice.

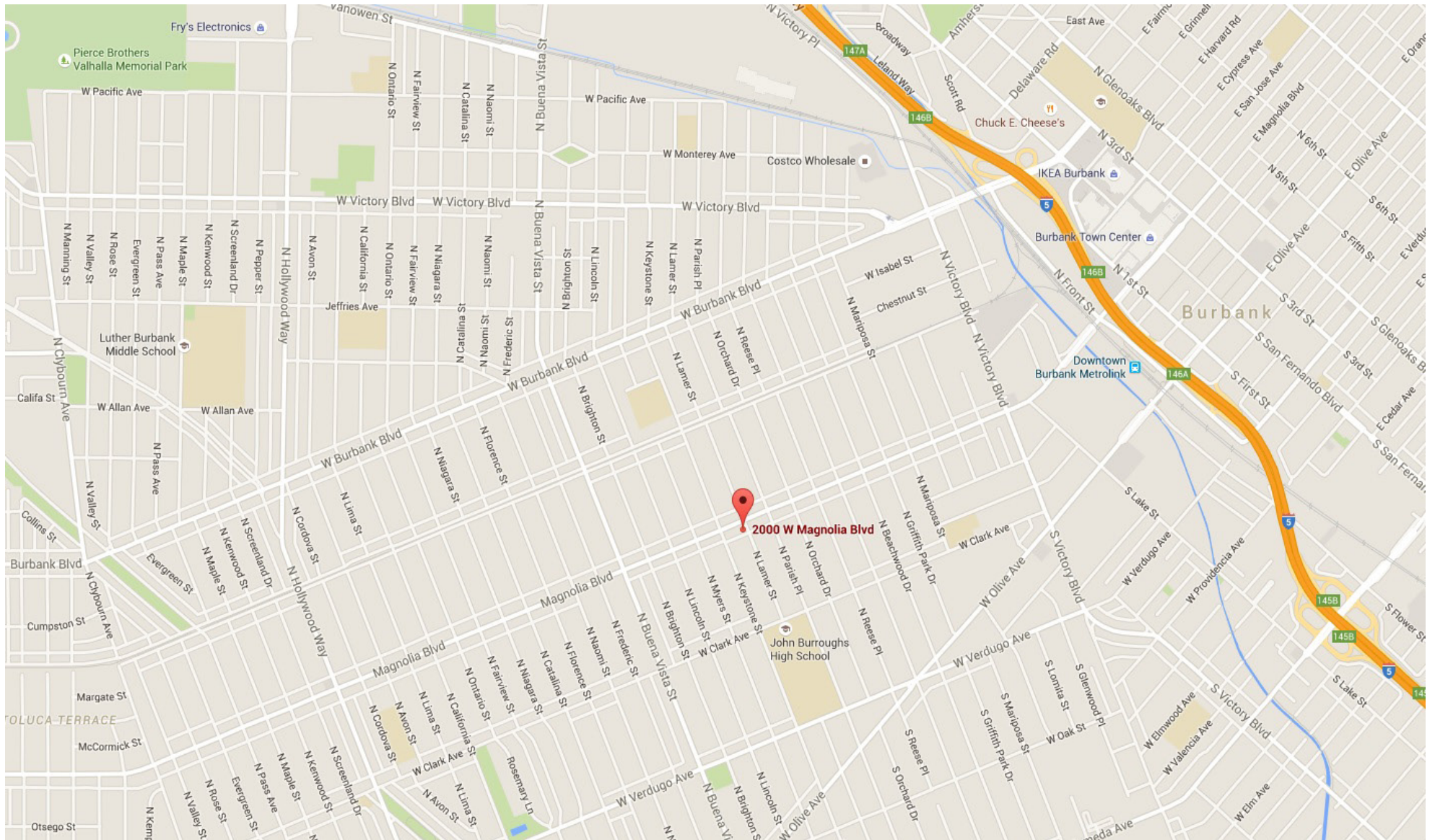
PRIME BURBANK OFFICE SPACES FOR LEASE

2000 W MAGNOLIA BOULEVARD, BURBANK, CA 91506



MAP

2000 W MAGNOLIA BOULEVARD, BURBANK, CA 91506





For more information, please call.



Commercial Asset Group
1801 Century Park East, Suite 1550
Phone 310.275.8222
www.cag-re.com
Lic. 01876070

David Ashkenasy
Executive Vice President
P 310.272.7381
E davida@cag-re.com
Lic. 01714442

Ryan Schimel
Director
P 310.272.7384
E ryans@cag-re.com
Lic. 01879511

These materials are based on information and content provided by others, which we believe are accurate. No guarantee, warranty or representation is made by Commercial Asset Group, Inc. or its personnel. All interested parties must independently verify accuracy and completeness. As well, any projections, assumptions, opinion, or estimates are used for example only and do not represent the current or future performance of the identified property. Your tax, financial, legal and toxic substance advisors should conduct a careful investigation of the property and its suitability for your needs, including land use limitations. The property is subject to prior lease, sale, change in price, or withdrawal from the market without notice.