

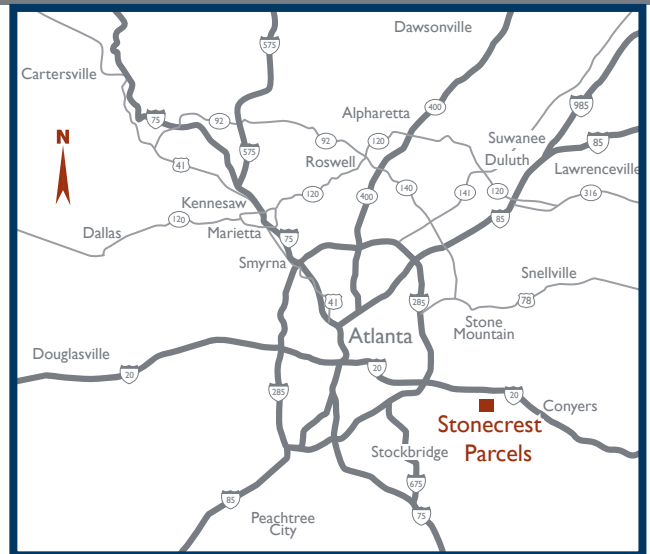
STONECREST LAND - 3 PARCELS FOR SALE CAN SUBDIVIDE

2940 TURNER HILL ROAD, STONECREST, GA 30038



PROPERTY DETAILS

- 3 Parcels of land in East DeKalb County, can be subdivided
- Excellent visibility and excellent access to Interstate 20 (132,000 VPD) via Turner Hill Road
- Close to Walmart
- Adjacent to the 1.2 million SF Mall at Stonecrest, anchored by Macy's, Dillard's, JC Penney, Sears and an AMC 16 Screen Stadium-Seated Theatre
- Stonecrest's mixed-use master-planned community covers 1,100 acres with over 2 million SF of mixed use commercial real estate
- Numerous restaurants, shops, hotels, apartments, medical offices, car dealerships, apartments and banks within a quarter mile

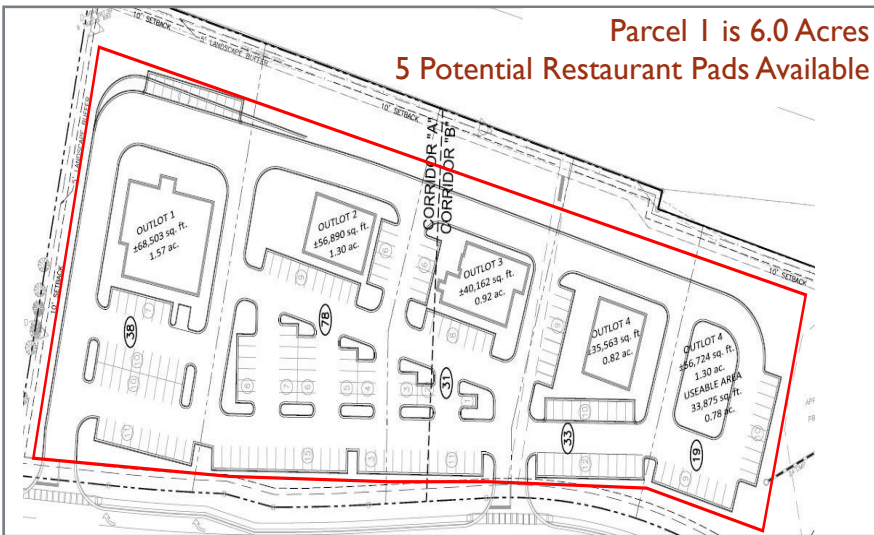


BRAND
Real Estate Services

BrandProperties.com
770.476.4801

STONECREST LAND - 3 PARCELS FOR SALE CAN SUBDIVIDE

2940 TURNER HILL ROAD, STONECREST, GA 30038



TRAFFIC COUNTS 2018

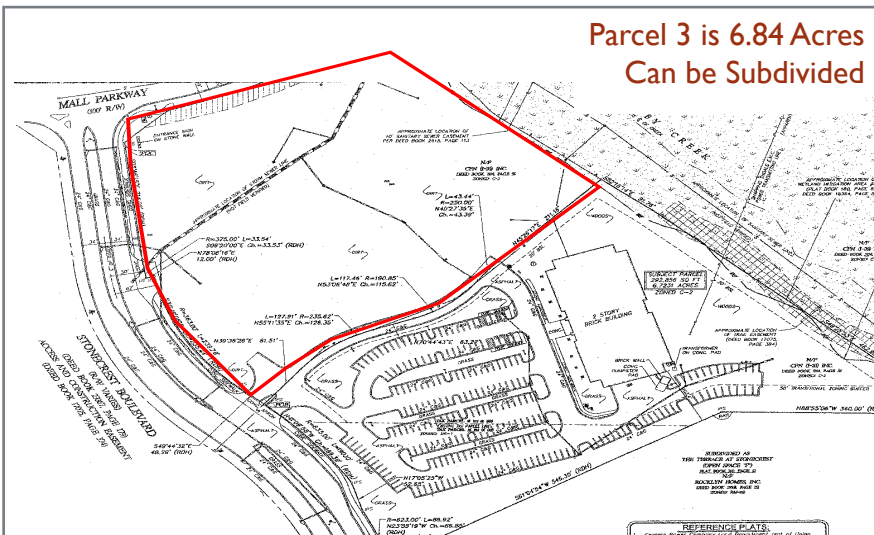
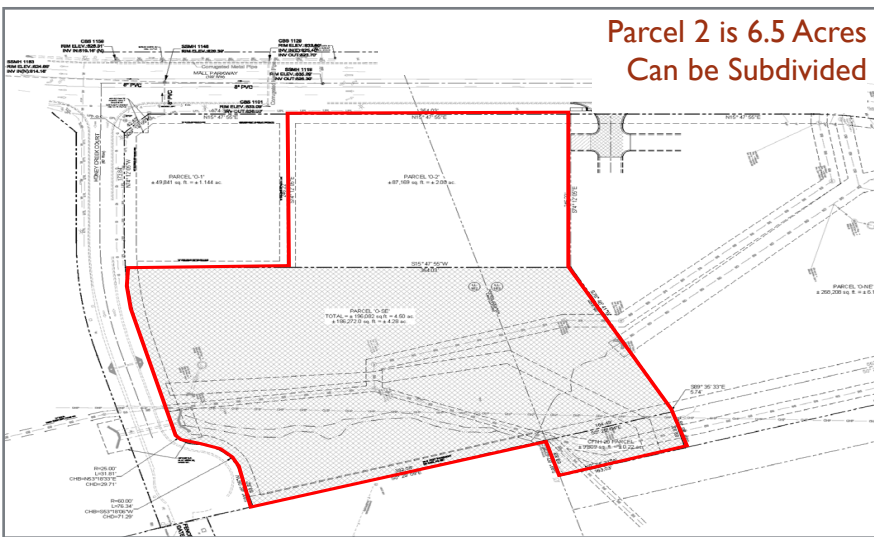
I-20 at Stonecrest	132,000 VPD
Turner Hill Road	18,700 VPD
Mall Parkway	13,300 VPD

DEMOGRAPHICS 2018 CoStar

	1 mile	3 miles	5 miles
Population	4,511	33,252	100,656
HH Income	\$64,256	\$57,587	\$62,348
Daytime			
Employment	4,794	12,839	32,662

GPS COORDINATES

Lat. 33.6976662 Long. -84.0879377



Michael Lowrey CRX, CSM
Associate Broker

mlowrey@BrandProperties.com

770.623.2088 Direct

678.372.0862 Mobile

BRAND Real Estate Services

1960 Satellite Boulevard, Suite 1300 Duluth, GA 30097 770.476.4801