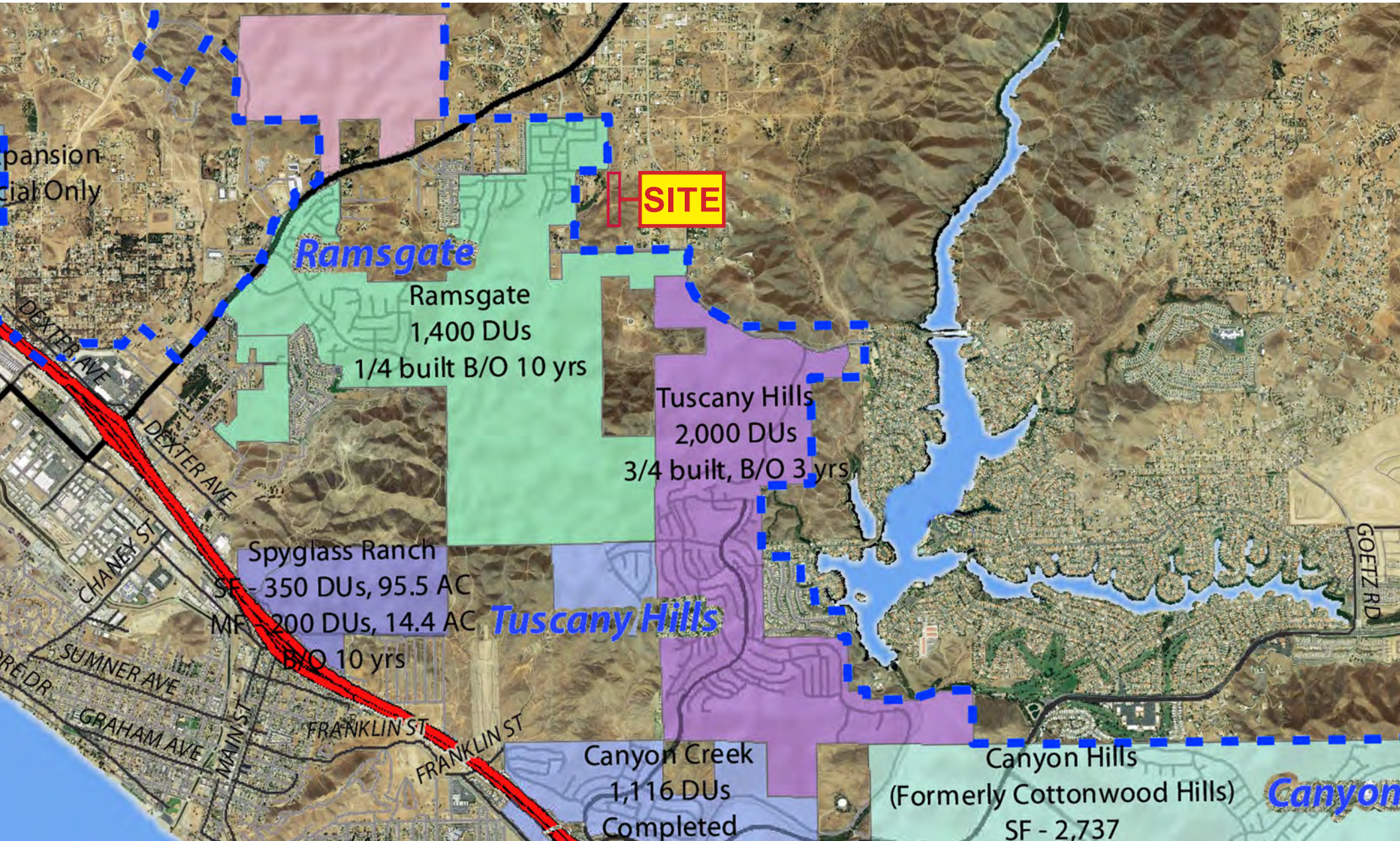
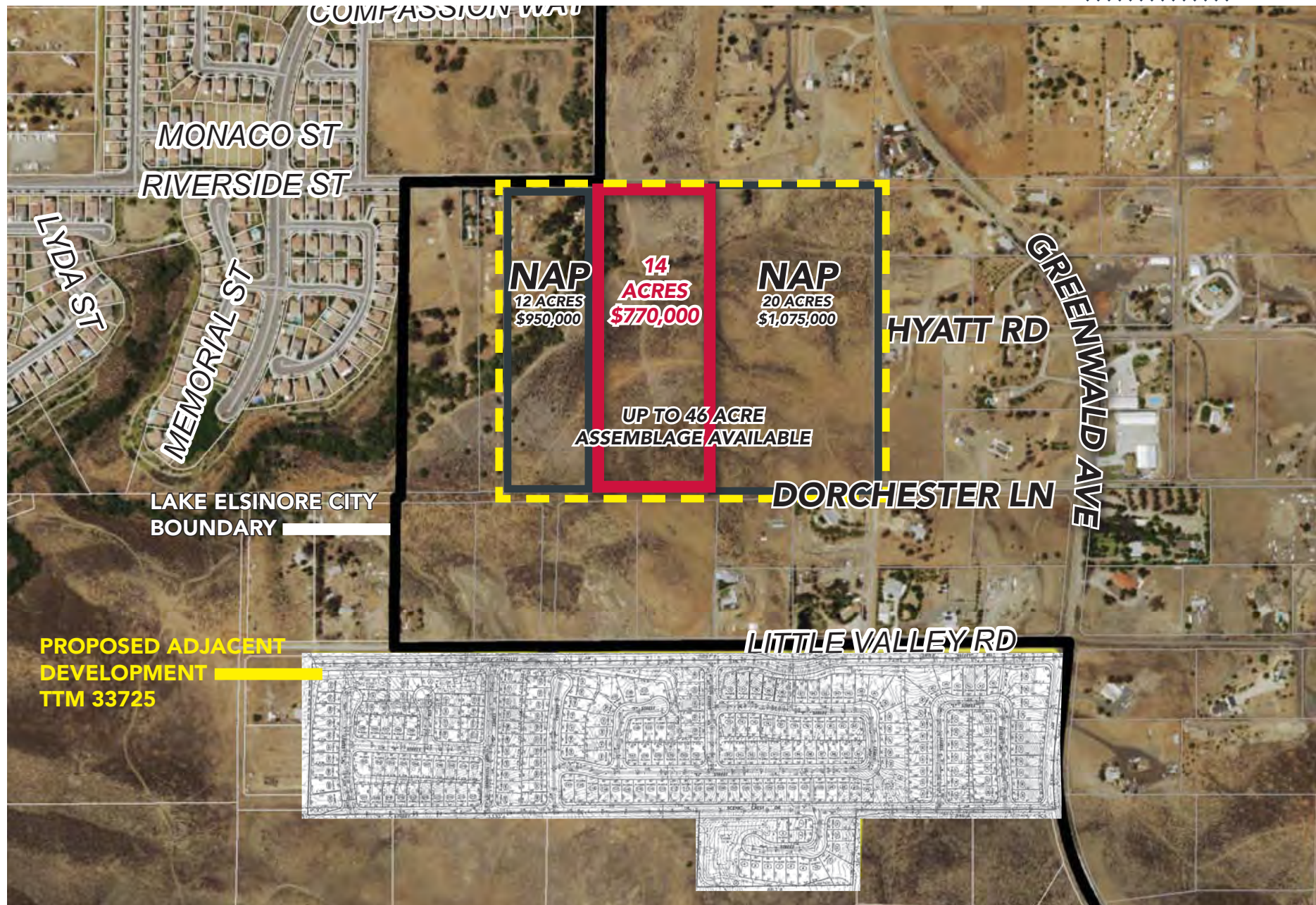


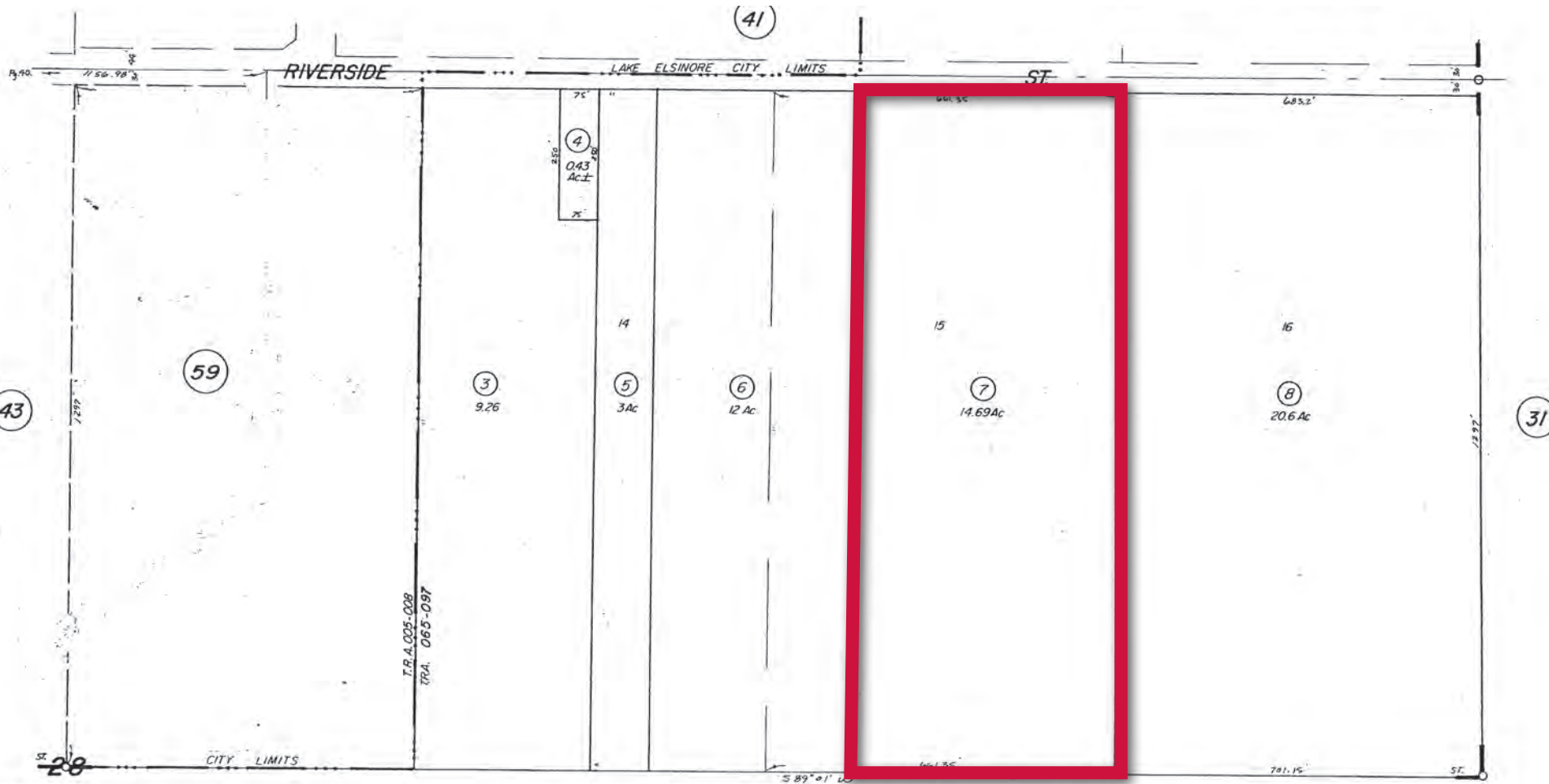
◇◇◇◇◇
 GREENWALD AVE &
 DORCHESTER LN
 PERRIS, CALIFORNIA 92570
 ◇◇◇◇◇◇◇◇◇◇◇◇◇◇◇◇



◇◇◇◇
GREENWALD AVE &
DORCHESTER LN
PERRIS, CALIFORNIA 92570
◇◇◇◇◇◇◇◇◇◇◇◇◇◇



◇◇◇◇
GREENWALD AVE &
DORCHESTER LN
PERRIS, CALIFORNIA 92570
◇◇◇◇◇◇◇◇◇◇◇◇◇◇









Demographics

Perris, CA has a population of 73,718 people with a median age of 26.6 and a median household income of \$51,315. Between 2015 and 2016 the population of Perris, CA grew from 72,547 to 73,718, a 1.61% increase and its median household income grew from \$49,325 to \$51,315, a 4.03% increase.

The population of Perris, CA is 73.1% Hispanic, 11.1% White, and 10.5% Black. 61.1% of the people in Perris, CA speak a non-English language, and 83.8% are U.S. citizens.

The largest universities in Perris, CA are University of California-Riverside, with 5,522 graduates, California State University-San Bernardino, with 4,023 graduates, and Chaffey College, with 2,963 graduates.

The median property value in Perris, CA is \$211,400, and the homeownership rate is 60%. Most people in Perris, CA commute by Drove Alone, and the average commute time is 36 minutes. The average car ownership in Perris, CA is 2 cars per household.

	3 Mile	5 Mile	10 Mile
 POPULATION	31,105	89,370	376,585
 MEDIAN HOUSEHOLD INCOME	\$81,563	\$69,798	\$70,887
 HIGH SCHOOL DEGREE OR HIGHER	11,761	31,509	126,583
 GRADUATE DEGREE OR HIGHER	4,048	10,377	42,906
 TOTAL EMPLOYEES	2,962	14,652	54,785
 TOTAL BUSINESSES	429	2,095	6,508