

For Lease – Biotech Manufacturing Facility
2801 Industrial Drive
Monona, WI 53716

Snapshot

PARCEL SIZE: 4.77 ACRES
TOTAL SQ. FT.: 26,000 SQ. FT.
BLDG FOOTPRINT: 43,900 SQ. FT.
EXPANDABLE: YES
LEASE RATE: \$5.00/ SQ. FT. (WAREHOUSE)
\$8.00/ SQ. FT. (LAB AREA)

Property Profile

- WATER PURIFICATION SYSTEM
- HEAVY POWER
- TWO ISO 6 CLEAN ROOMS (TOTALING 2,700 SQ. FT.)
- AREAS WITH TRENCH FLOOR DRAINS
- FACILITY USED TO PRODUCE DIAGNOSTIC MEDICAL DEVICES
- 3,500 SQ. FT. COOLER
- 9,500 SQ. FT. ADMINISTRATIVE/OFFICE
- 7,000 SQ. FT. PRODUCTION/PACKAGING SPACE
- 6,000 SQ. FT. LAB/QC/PRODUCTION
- EXCESS LAND FOR BUILDING EXPANSION
- 4 DOCK DOORS (MORE CAN BE ADDED)
- 92 PARKING STALLS (MORE POSSIBLE)
- 100% AIR CONDITIONED; FIRE/SMOKE/TEMP MONITORED
- SPRINKLER SYSTEM FOR MANUFACTURING BUILDING
- LARGE COMPRESSORS, STEAM GENERATORS & CHILLERS
- FF&E INCL. AUTOCLAVES, COOLERS, ACCESS CONTROL, ETC...



For More Information on this Property,
Please Contact:

Blake George, Principal
Direct: 608-327-4019
Cell: 608-209-9990
bgeorge@lee-associates.com

Aerial Map and Interior Photos



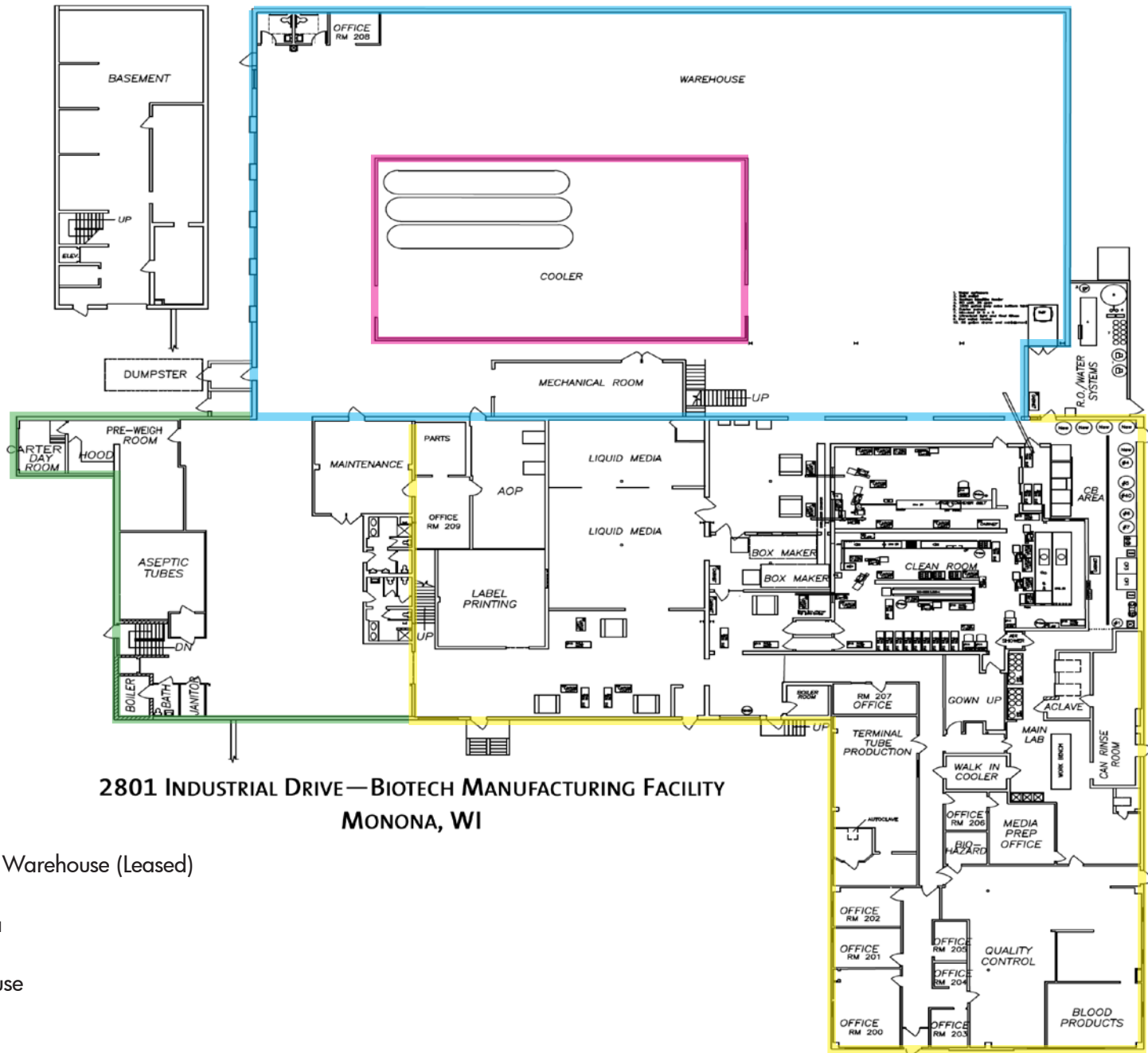
Additional Interior Photos

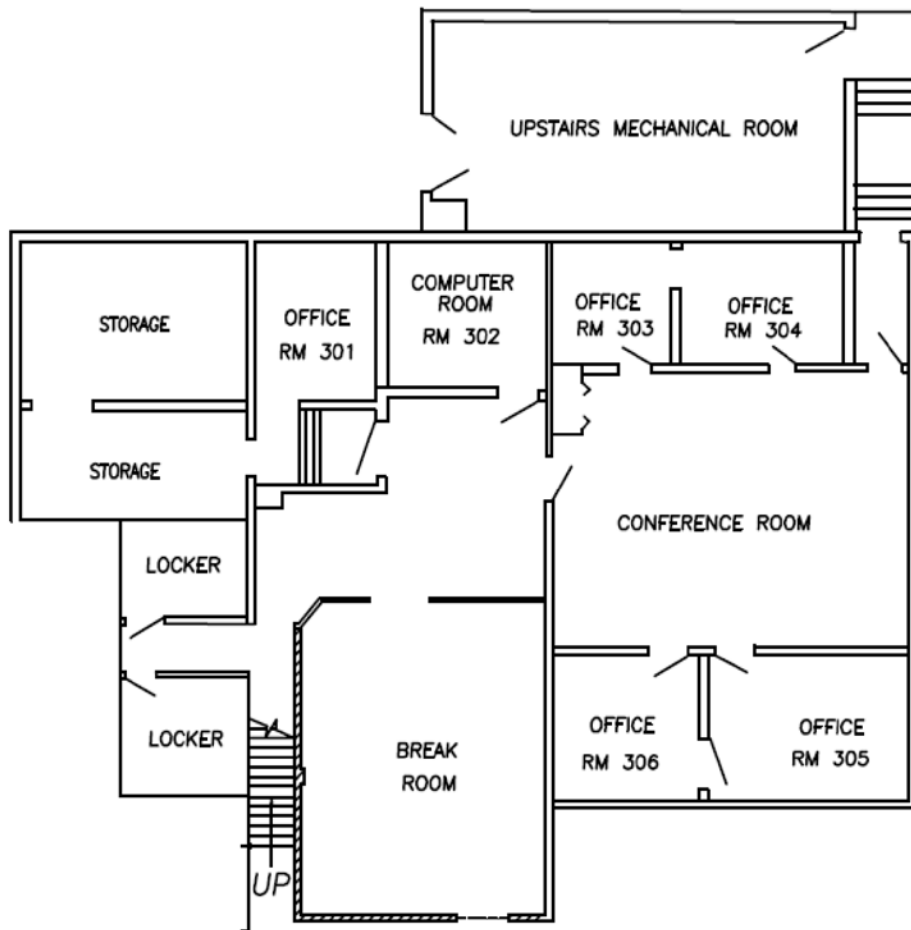


WATER PURIFICATION ROOM

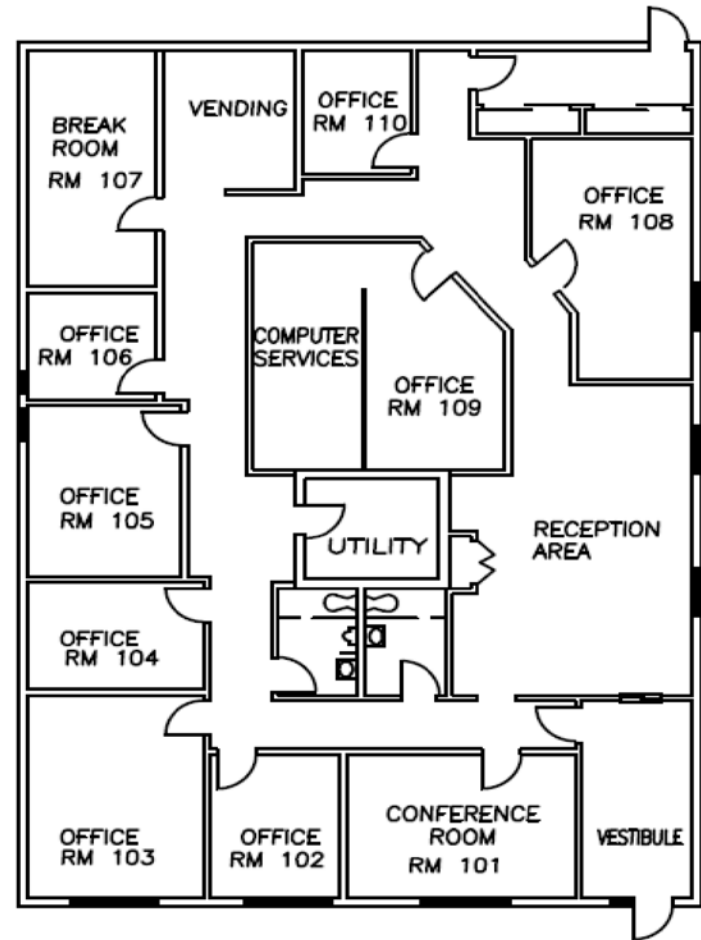


Floor Plan





MEZZANINE SPACE



SEPARATE ADMINISTRATION BUILDING