

# Meridian & 128th Street Retail

10023 128th Street East, Puyallup, WA



**FOR LEASE**

1,425 SF Retail/Office Space Available Now  
2,750 SF Automotive-Oriented Space Available Soon

Rachel Corp  
253.722.1417  
rcorp@kiddermathews.com

[kiddermathews.com](http://kiddermathews.com)

**km** Kidder  
Mathews

# Meridian & 128th Street Retail

10023 128th Street East, Puyallup, WA

## Features

**PRICE** \$16.00-\$18.00 PSF

**HIGHLIGHT** Great South Hill Puyallup location on Meridian

**AVAILABLE** 1,425 SF available at \$16.00 PSF  
2,750 SF auto repair shop available with 90 days notice

**PARKING** Ample parking - 7:1,000 SF  
Shared with neighboring property

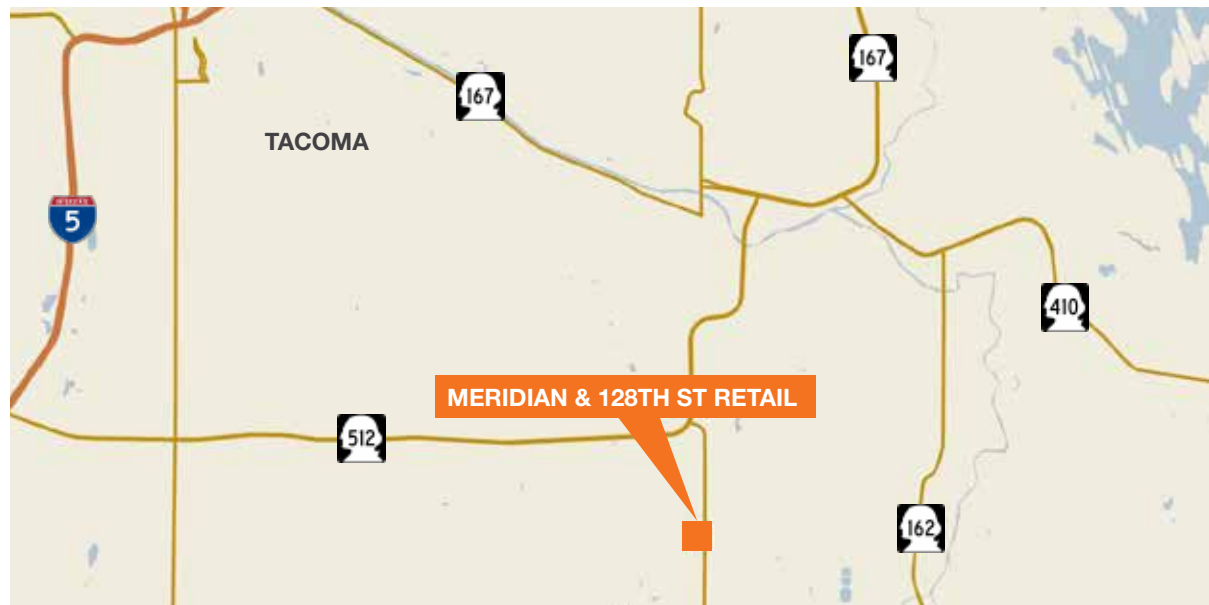
**LOCATION** Great intersection - Meridian & 128th St E

**ZONED** UV - Pierce County South Hill Planning Area

**TRAFFIC COUNTS** Combined ADT of 49,625 cars

### DEMOGRAPHICS

	1 mile	3 miles	5 miles
Population	13,133	79,918	169,171
Average HH Income	\$57,886	\$70,411	\$70,231



Rachel Corp  
253.722.1417  
rcorp@kiddermathews.com

[kiddermathews.com](http://kiddermathews.com)



This information supplied herein is from sources we deem reliable. It is provided without any representation, warranty or guarantee, expressed or implied as to its accuracy. Prospective Buyer or Tenant should conduct an independent investigation and verification of all matters deemed to be material, including, but not limited to, statements of income and expenses. Consult your attorney, accountant, or other professional advisor.

# Meridian & 128th Street Retail

10023 128th Street East, Puyallup, WA



Rachel Corp  
253.722.1417  
rcorp@kiddermathews.com

[kiddermathews.com](http://kiddermathews.com)

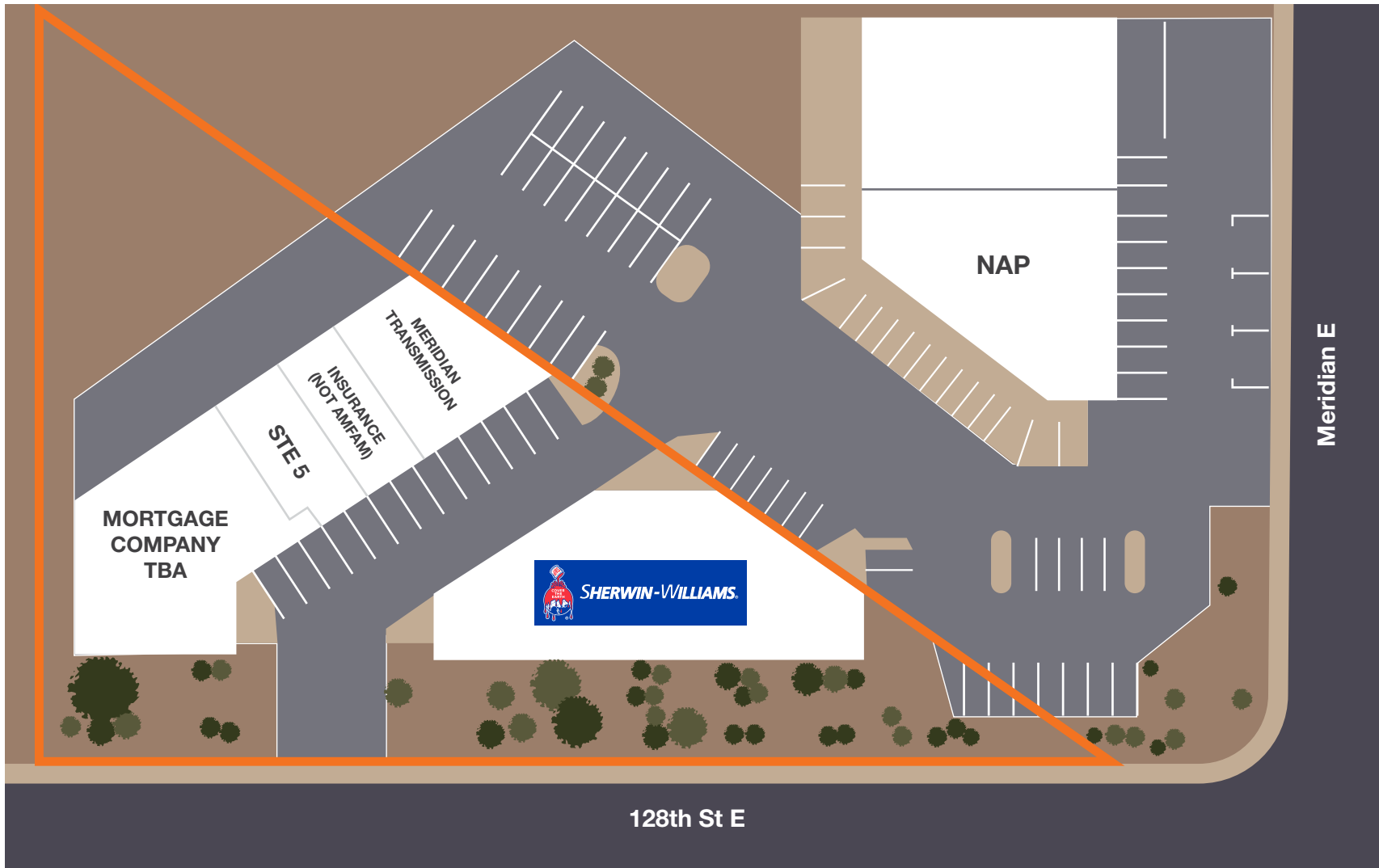


This information supplied herein is from sources we deem reliable. It is provided without any representation, warranty or guarantee, expressed or implied as to its accuracy. Prospective Buyer or Tenant should conduct an independent investigation and verification of all matters deemed to be material, including, but not limited to, statements of income and expenses. Consult your attorney, accountant, or other professional advisor.

# Meridian & 128th Street Retail

10023 128th Street East, Puyallup, WA

## Shopping Center Plan



Rachel Corp  
253.722.1417  
rcorp@kiddermathews.com

[kiddermathews.com](http://kiddermathews.com)



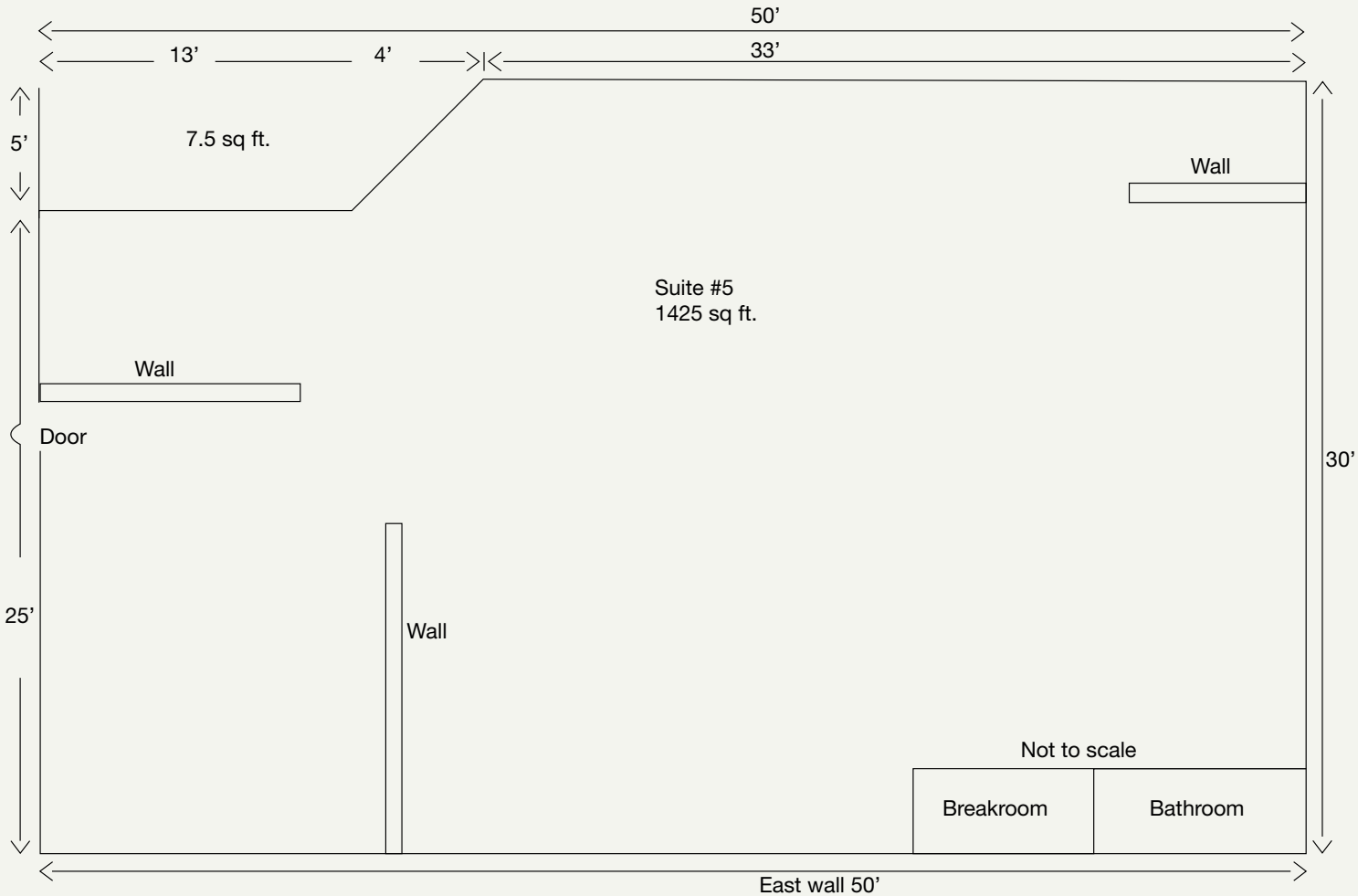
This information supplied herein is from sources we deem reliable. It is provided without any representation, warranty or guarantee, expressed or implied as to its accuracy. Prospective Buyer or Tenant should conduct an independent investigation and verification of all matters deemed to be material, including, but not limited to, statements of income and expenses. Consult your attorney, accountant, or other professional advisor.

# Meridian & 128th Street Retail

10023 128th Street East, Puyallup, WA

## Floor Plan

### SUITE 5



Rachel Corp  
253.722.1417  
rcorp@kiddermathews.com

[kiddermathews.com](http://kiddermathews.com)

