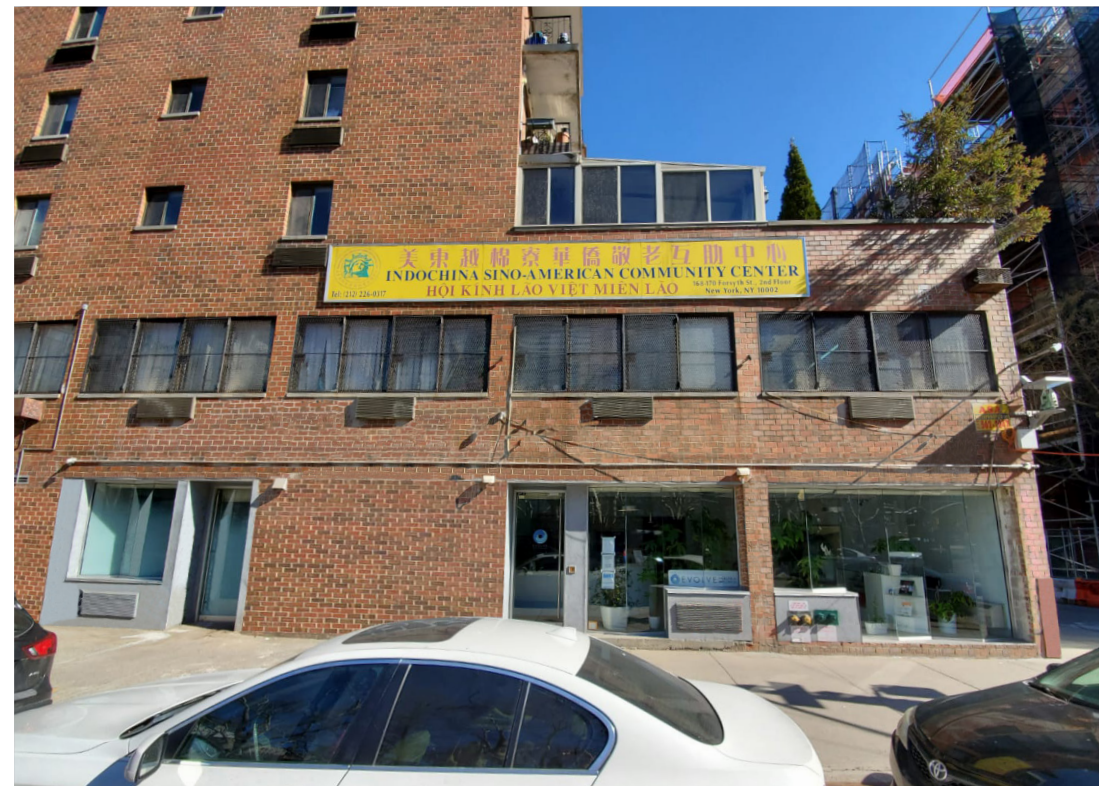

36 Rivington Street

LOWER EAST SIDE
NEW YORK, NY



36 RIVINGTON STREET

Property Details

Location

Southwest corner of Rivington and Forsyth Streets

Approximate Size

Ground Floor	3,000 SF*
Lower Level	2,200 SF*
Total	5,200 SF

*divisible

Ceiling Height

Ground Floor	11 FT
Lower Level	9 FT

Frontage

58 FT on Forsyth Street
50 FT on Rivington Street

Term

Long term

Possession

Immediate

Rent

Upon request

Neighbors

Mount Sinai Health, Daily Paper, Freemans Sporting Club, The Box, Public Hotel, Citizen M Hotel, The New Museum, Lorely Beer Garden and The Butcher's Daughter

Comments

Multiple divisions considered

Across the street from Mount Sinai's new 150,000-SF health facility

Ability to customize and change storefront

All uses considered

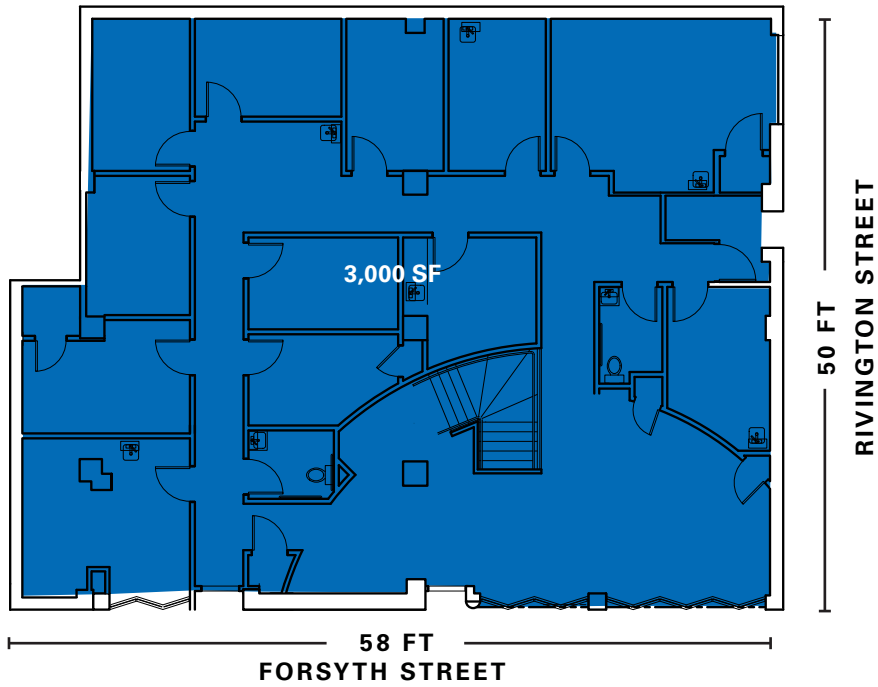
Lower Level space can be leased with its own entrance on Rivington Street

Steps from top-rated boutique hotels

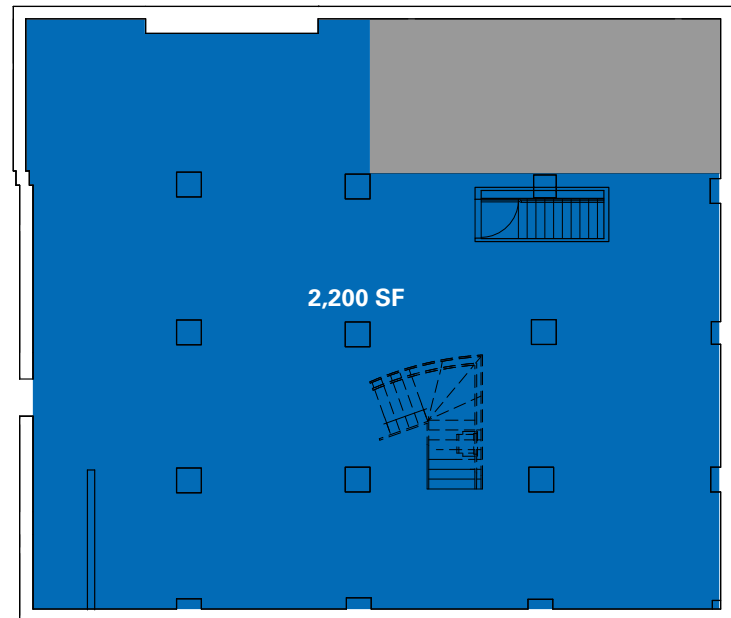
In close proximity to Essex Crossing with 1.8 million SF of mixed-use retail, residential and commercial space

Floor Plans

Ground Floor



Lower Level



36 RIVINGTON STREET



CONTACT

Brandon Miller

t 917-513-7933

brandonalden.miller@nmrk.com

Andrew Stern

t 212-351-9353

andrew.stern@nmrk.com

nmrk.com

⊕ COMING SOON