



eight

SAN FRANCISCO
CA

OCTAVIA



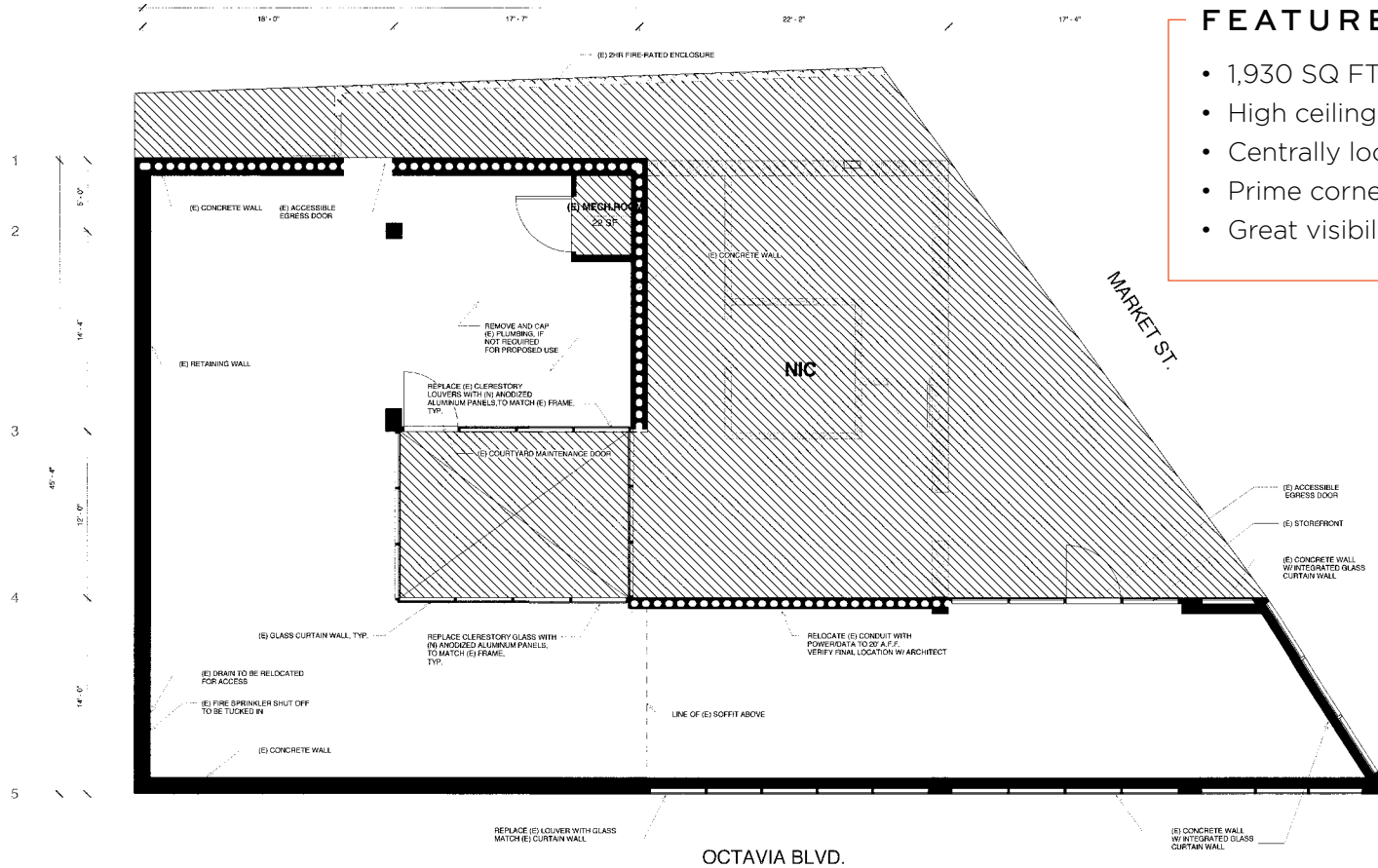


18'+ CEILINGS

- Retail/Restaurant/Professional Offices
- Restaurant Infrastructure in Place
- 100' of Street Frontage

maven
RETAIL

PERIMETER LAYOUT



- FEATURES**
- 1,930 SQ FT on ground floor
 - High ceilings
 - Centrally located
 - Prime corner location with expansive window line
 - Great visibility

Existing Plan
1/4" = 1'-0"

GENERAL NOTES

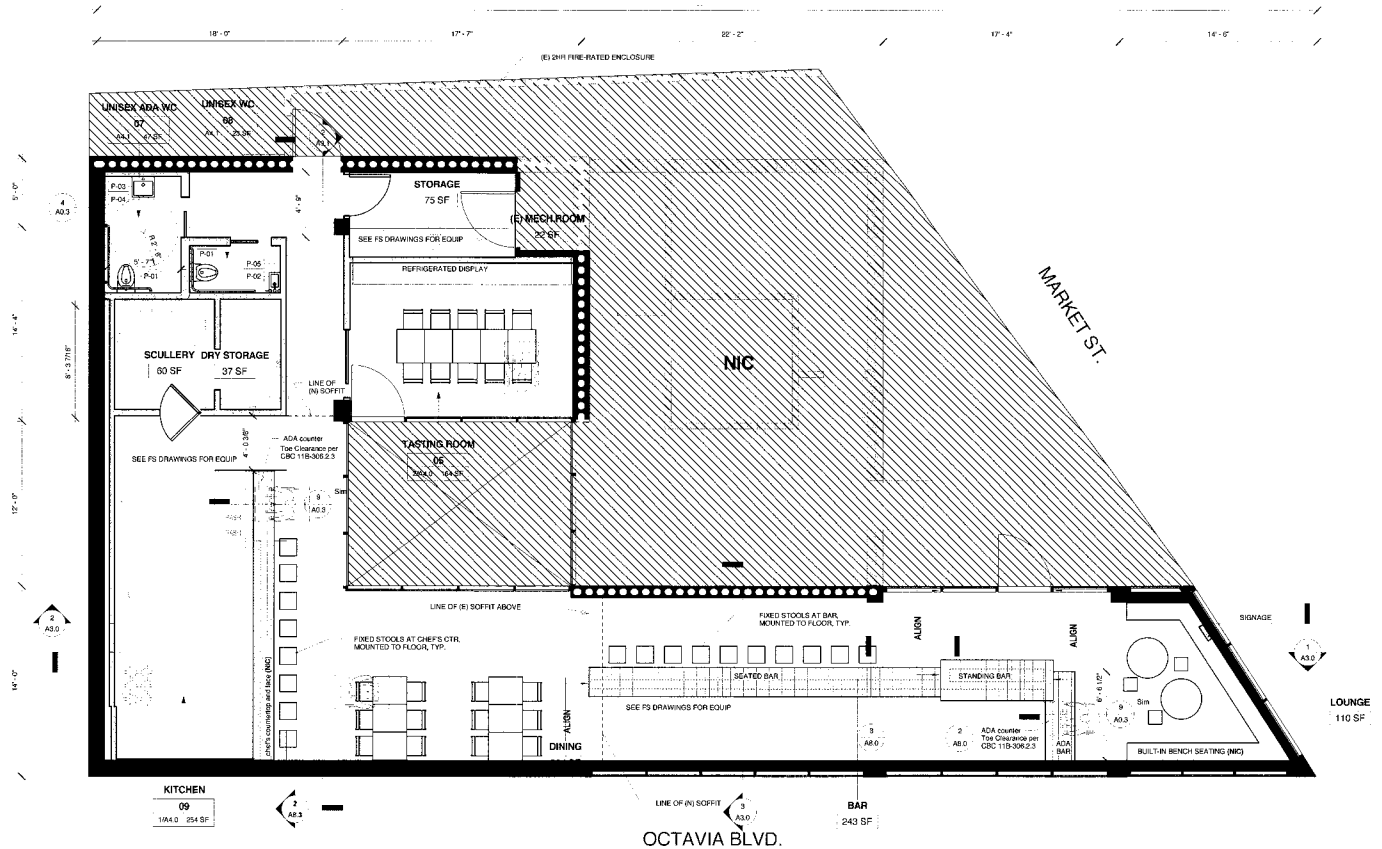
- 1 PERIMETER WALLS TO REMAIN
- 2 DIMENSIONS INDICATED FROM FACE OF FINISH

GRAPHICS LEGEND

- EXISTING WALL
- EXISTING 1 HR FIRE-RATED WALL
- NOT IN SCOPE (NIC)



POTENTIAL RESTAURANT LAYOUT



Proposed PF+E Plan
1/4" = 1'-0"

GENERAL NOTES

1. KITCHEN EQUIPMENT SHOWN FOR REFERENCE ONLY. SEE FS DRAWINGS FOR SPECIFICATIONS AND DETAILS.
2. PROVIDE BLOCKING FOR ALL WALL MOUNTED FIXTURES AND EQUIPMENT. VERIFY LOCATIONS W/ ARCHITECT.

GRAPHICS LEGEND

- EXISTING WALL
- EXISTING 1 HR FIRE-RATED WALL
- NEW FULL-HEIGHT WALL
- NEW PARTIAL-HEIGHT WALL
- NOT IN SCOPE (NIC)





maven
RETAIL

LOCAL SPOTS

- 1 Martuni's
- 2 Izakaya Roku
- 3 Orbit Room
- 4 The Mint Karaoke Lounge
- 5 Orenchi Beyond
- 6 Boba Guys Hayes Valley
- 7 Proposition Chicken
- 8 Zeitgeist
- 9 Pauline's Pizza
- 10 Burma Love
- 11 Shizen Vegan Sushi Bar
- 12 Espetus Churrascaria
- 13 Straw
- 14 Zuni Café
- 15 Brick & Mortar Music Hall
- 16 Public Works
- 17 The Armory Club
- 18 Mission Beach Cafe
- 19 Whole Foods Market
- 20 Safeway
- 21 FedEx Office
- 22 Four Barrel Coffee
- 23 City College of San Francisco
- 24 Forgery Bar
- 25 KitTea Cat Cafe
- 26 Hôtel Biron
- 27 20th Century Cafe
- 28 Rich Table
- 29 All Star Cafe
- 30 Bai Thong Thai
- 31 Nina's Cafe
- 32 SFJAZZ
- 33 Biergarten
- 34 Walgreens
- 35 Smitten Ice Cream



SMITTEN ICE CREAM



20TH CENTURY CAFE



HÔTEL BIRON



RICH TABLE



BIERGARTEN



FORGERY



STRAW



ZUNI CAFE



8 OCTAVIA



ESPETUS CHURRASCARIA



MINT KARAOKE LOUNGE



ZEITGEIST



BURMA LOVE



BOBA GUYS



ARMORY CLUB



WHOLE FOODS MARKET



FOUR BARREL COFFEE



SHIZEN VEGAN SUSHI



MISSION BEACH CAFE



16th St Mission BART



HAYES & MARKET





HALEY KLEIN

office 415.404.7330

haley@mavenproperties.com

BRE #01907308

JOAN RUYLE

office 415.404.7313

joan@mavenproperties.com

BRE #02006025

NOTICE: This information has been secured from sources we believe to be reliable but we make no representations, warranties, express or implied, as to the accuracy of the information. Listing broker has been given enough information to provide only a preliminary interest in the property. The materials are not to be considered fact. The information contained herein is not a substitute for thorough due diligence investigation. References to square footage, zoning, use, or age are approximate. Please contact the San Francisco Planning Department to verify zoning at (415) 558-6378, as neither broker or landlord represent that this space is suitable for your use. Tenant or Buyer must verify the information at their own expense and bears all the risk for any inaccuracies. By receiving these materials you are agreeing to the disclaimers set forth herein. BRE#01878802

466 Green Steet Suite #203 | San Francisco, CA 94133 | 415.781.7700