



151st & S Brentwood Street Olathe, Kansas

- 4.51 Acres
- “L” shaped property with access from 151st Street and Brentwood Street
- Monument sign permitted
- Zoned C-2 General Business, PUD
- Next to new Walmart Neighborhood Market and across the street from Garmin International. Great for retail or office uses.

| Demographics | 1 mile | 3 mile | 5 mile |
|---------------------|----------|----------|----------|
| Est. Population: | 8,870 | 72,448 | 140,573 |
| Est. Median Income: | \$79,314 | \$77,550 | \$87,675 |

For more information contact:

Carl LaSala

+1 913 956 5805

carl@nai-heartland.com



NO WARRANTY OR REPRESENTATION, EXPRESS OR IMPLIED, IS MADE AS TO THE ACCURACY OF THE INFORMATION CONTAINED HEREIN, AND THE SAME IS SUBMITTED SUBJECT TO ERRORS, OMISSIONS, CHANGE OF PRICE, RENTAL OR OTHER CONDITIONS, PRIOR SALE, LEASE OR FINANCING, OR WITHDRAWAL WITHOUT NOTICE, AND OF ANY SPECIAL LISTING CONDITIONS IMPOSED BY OUR PRINCIPALS NO WARRANTIES OR REPRESENTATIONS ARE MADE AS TO THE CONDITION OF THE PROPERTY OR ANY HAZARDS CONTAINED THEREIN ARE ANY TO BE IMPLIED.

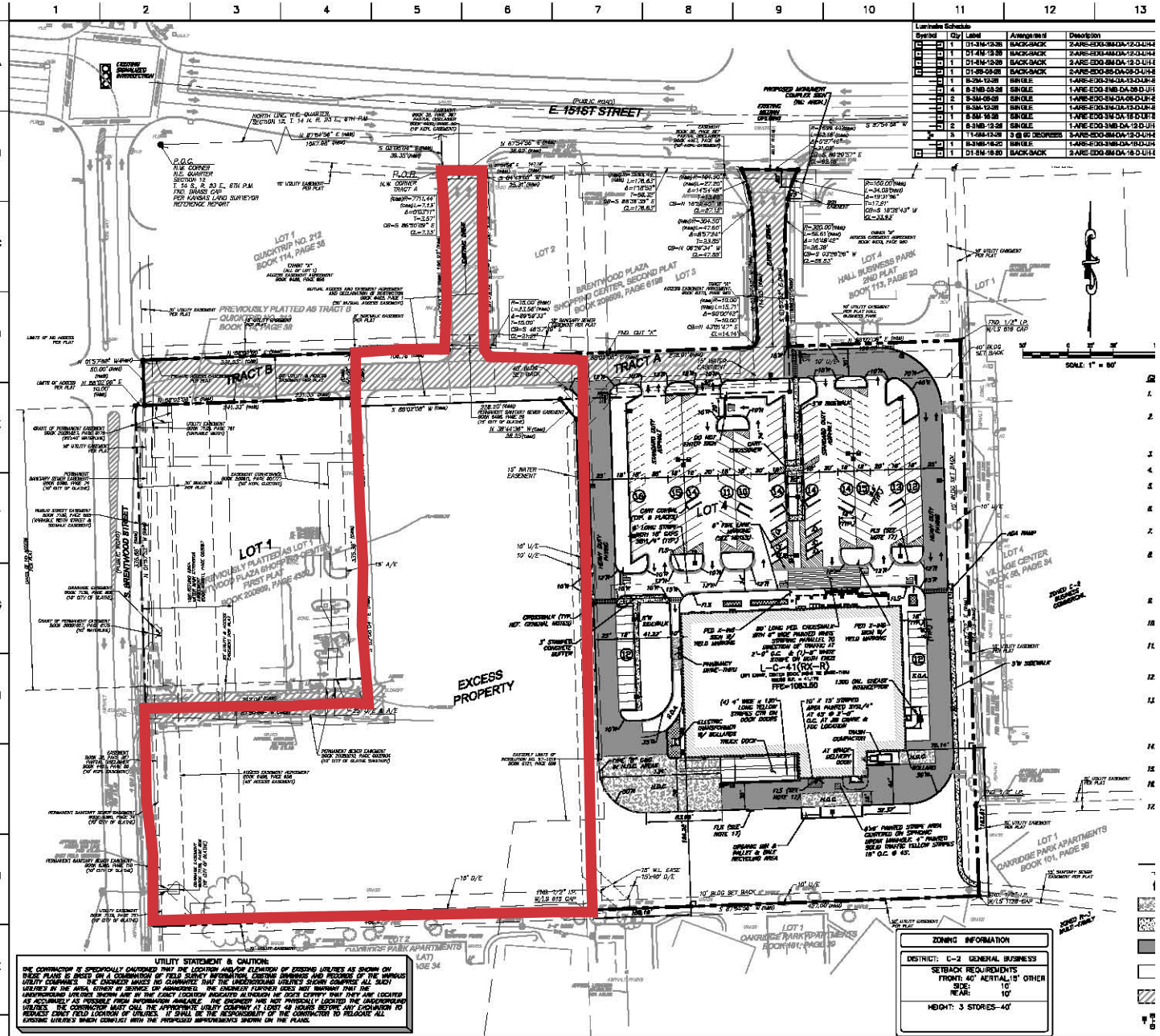
4400 College Boulevard Suite 170

Overland Park, Kansas 66211

+1 913 362 1000

nai-heartland.com

151st & S Brentwood Street Site Plan



4400 College Boulevard Suite 170
 Overland Park, Kansas 66211
 +1 913 362 1000
nai-heartland.com

