

Newly Renovated +/- 5,500 SF Creative Office Space in Mission Hills for Lease

**1899 McKee Street
San Diego, CA 92110**

Emmett Cahill
BRE #02033604
619.243.8457
ecahill@qfcre.com



QFC Real Estate | 1495 Pacific Highway | Suite 450 | San Diego | CA | 92101 | 619-243-8454

The information contained here has been obtained from sources considered to be reliable, but no guarantee of its accuracy is made by this company. In addition, no representation is made respecting zoning, condition of title, dimensions or any matters of a legal or environmental nature. Such matters should be referred to legal counsel for determination. Terms and conditions are subject to change without prior notice. Subject to errors and omissions. Buyer to confirm zone and use.

PROPERTY SUMMARY



PROPERTY SUMMARY

Available Space +/- 5,500 Square Feet
Entire Second Floor

LEASE RATE

Base Rent \$2.15 psf + e and j

LOCATION HIGHLIGHTS

- Reception
- Eleven (11) Private Offices
- Conference Room
- Large Bull Pen
- Kitchen
- Storage
- IT/Copy Room
- Parking Available
- Restrooms
- Creative office space, perfect for law firm, tech, or media companies
- High ceilings and tons of natural light throughout
- Breathtaking views
- New carpet and paint just added

PROPERTY HIGHLIGHTS

- Premier Centrally Located Location
- Iconic Views of San Diego Harbor, Point Loma and San Diego International Airport
- Walking Distance to International Restaurant Row
- Minutes to Old Town, Mission Hills, Uptown and Little Italy
- Immediate Access to I-5
- Proximate to I-8 and SR-163
- Close to Public Transportation

QFC Real Estate | 1495 Pacific Highway | Suite 450 | San Diego | CA | 92101 | 619-243-8454

The information contained here has been obtained from sources considered to be reliable, but no guarantee of its accuracy is made by this company. In addition, no representation is made respecting zoning, condition of title, dimensions or any matters of a legal or environmental nature. Such matters should be referred to legal counsel for determination. Terms and conditions are subject to change without prior notice. Subject to errors and omissions. Buyer to confirm zone and use.

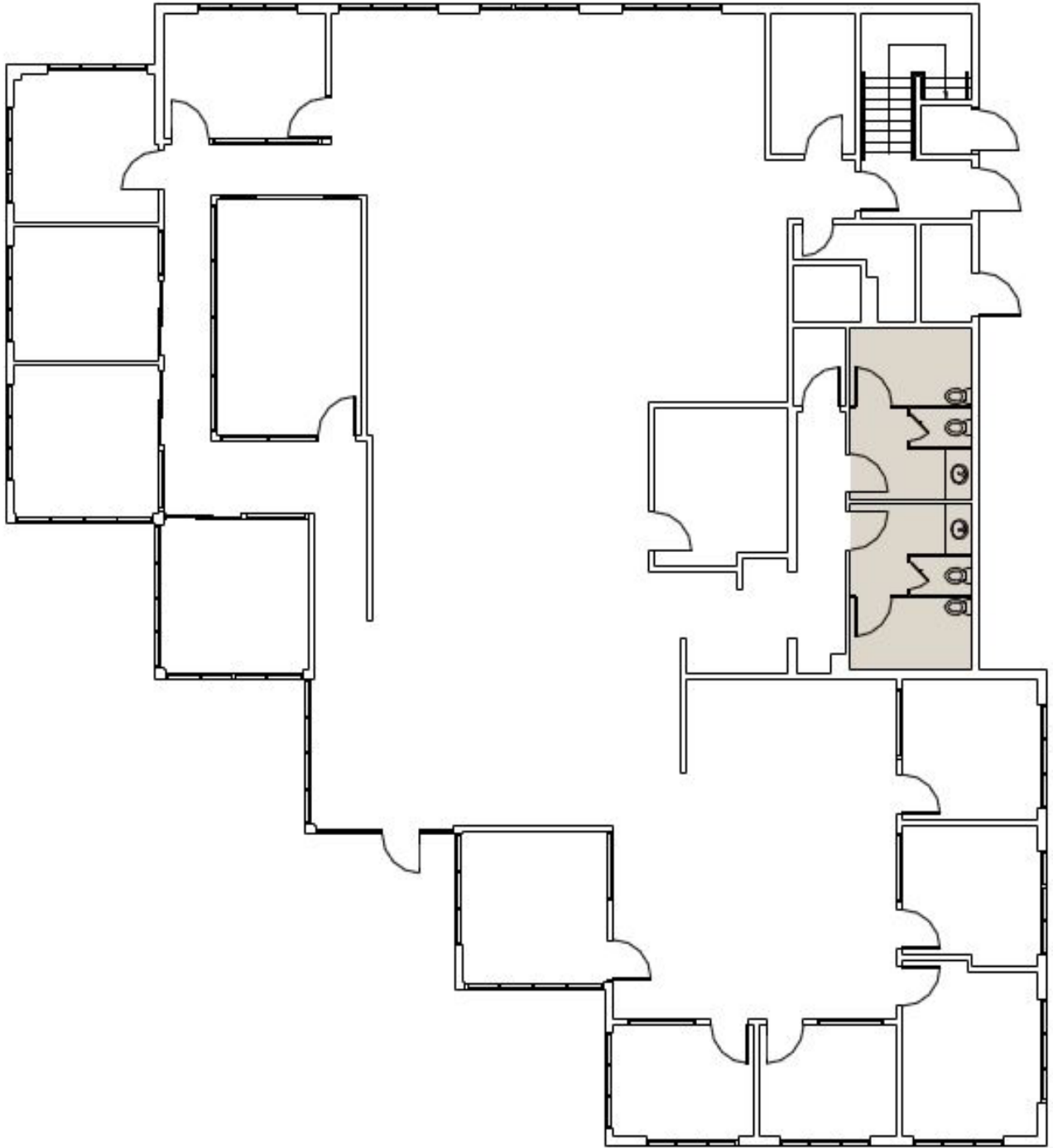
PHOTOS



QFC Real Estate | 1495 Pacific Highway | Suite 450 | San Diego | CA | 92101 | 619-243-8454

The information contained here has been obtained from sources considered to be reliable, but no guarantee of its accuracy is made by this company. In addition, no representation is made respecting zoning, condition of title, dimensions or any matters of a legal or environmental nature. Such matters should be referred to legal counsel for determination. Terms and conditions are subject to change without prior notice. Subject to errors and omissions. Buyer to confirm zone and use.

LAYOUT



QFC Real Estate | 1495 Pacific Highway | Suite 450 | San Diego | CA | 92101 | 619-243-8454

The information contained here has been obtained from sources considered to be reliable, but no guarantee of its accuracy is made by this company. In addition, no representation is made respecting zoning, condition of title, dimensions or any matters of a legal or environmental nature. Such matters should be referred to legal counsel for determination. Terms and conditions are subject to change without prior notice. Subject to errors and omissions. Buyer to confirm zone and use.

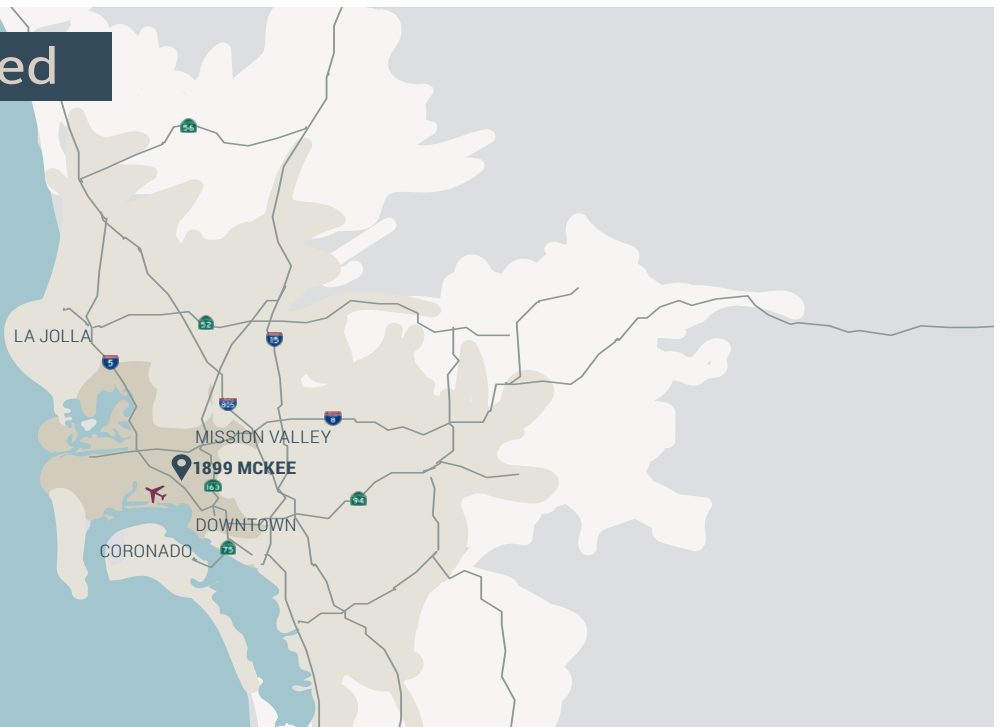
LOCATION



Centrally Located

Drive times

- 30 minutes
- 20 minutes
- 10 minutes



QFC Real Estate | 1495 Pacific Highway | Suite 450 | San Diego | CA | 92101 | 619-243-8454

The information contained here has been obtained from sources considered to be reliable, but no guarantee of its accuracy is made by this company. In addition, no representation is made respecting zoning, condition of title, dimensions or any matters of a legal or environmental nature. Such matters should be referred to legal counsel for determination. Terms and conditions are subject to change without prior notice. Subject to errors and omissions. Buyer to confirm zone and use.