

# ENSIGN PLAZA SOUTH

2225 Washington, Ogden, Utah

# ENSIGN PLAZA SOUTH

2225 Washington, Ogden, Utah



# FOR LEASE

\$22.50 PSF Full Service

## PROPERTY FEATURES

- 1,733 RSF Available
- Class A Exterior and Common Features
- Main Level - Immediate Lobby Location
- Main Level Signage Available
- 4:1,000 SF Parking Ratio
- 1:1,000 On-Site Underground Parking
- 3:1,000 On-Site Parking Garage
- Additional Common Parking Throughout Development

FOR MORE  
INFORMATION  
CONTACT

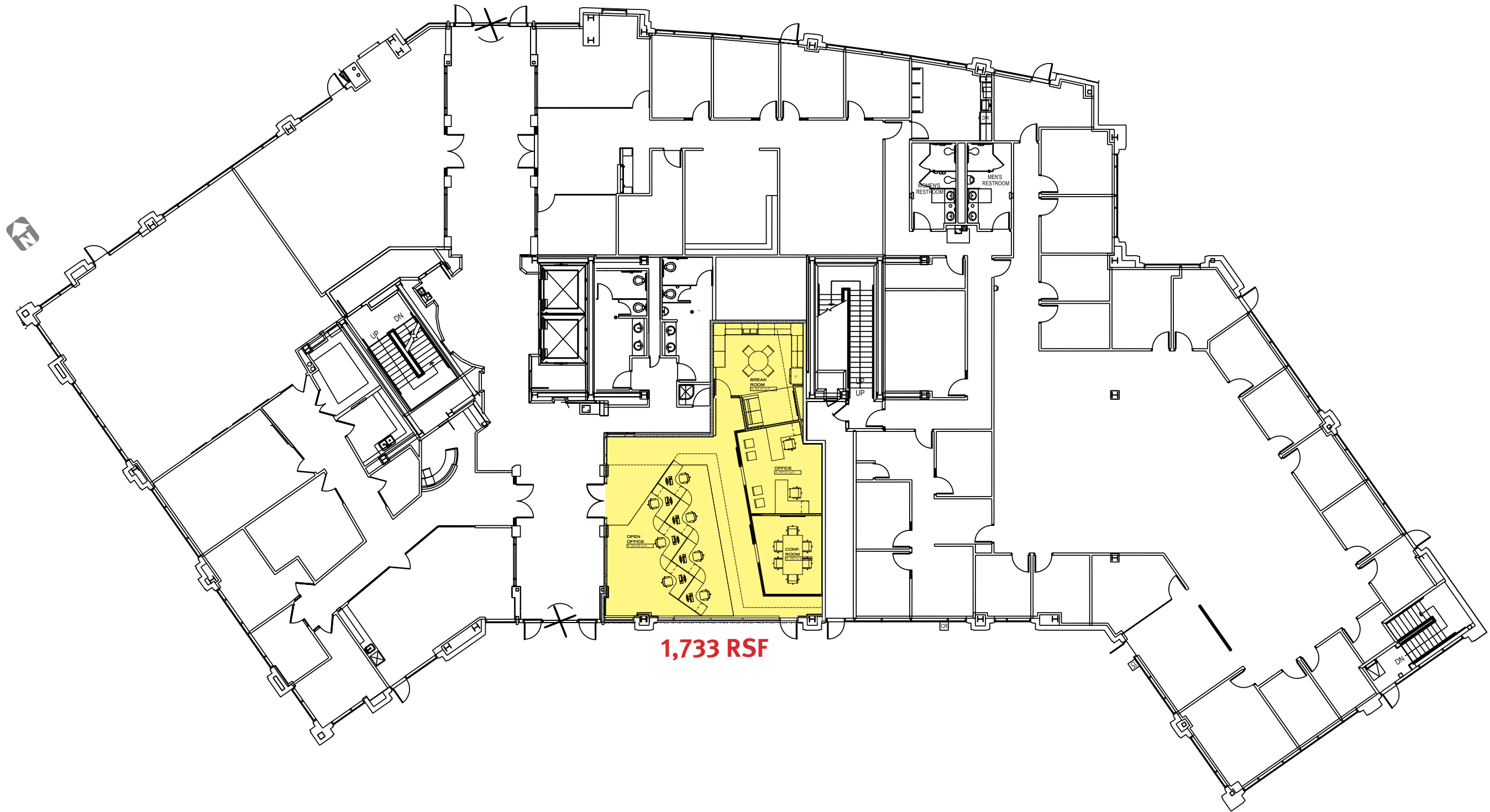
CHRIS FALK, CCIM, SIOR  
801.416.1024  
chris.falk@ngkf.com

BRAXTON WILLIE, CCIM  
801.416.1050  
braxton.willie@ngkf.com



# ENSIGN PLAZA SOUTH

2225 Washington, Ogden, Utah



1,733 RSF