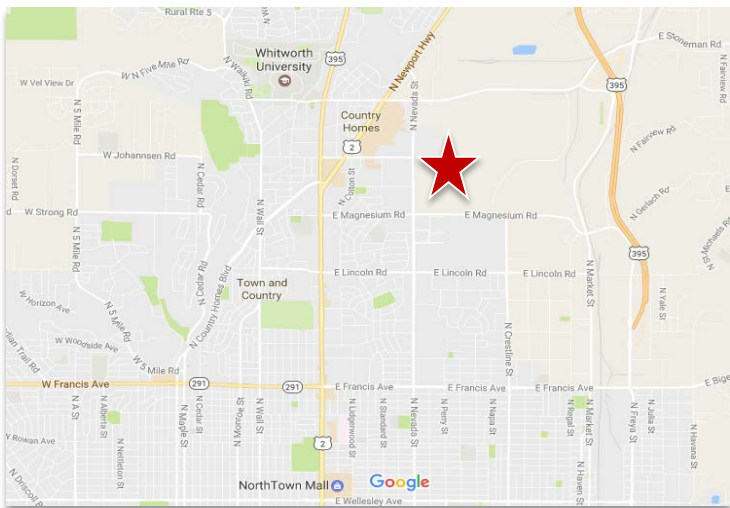
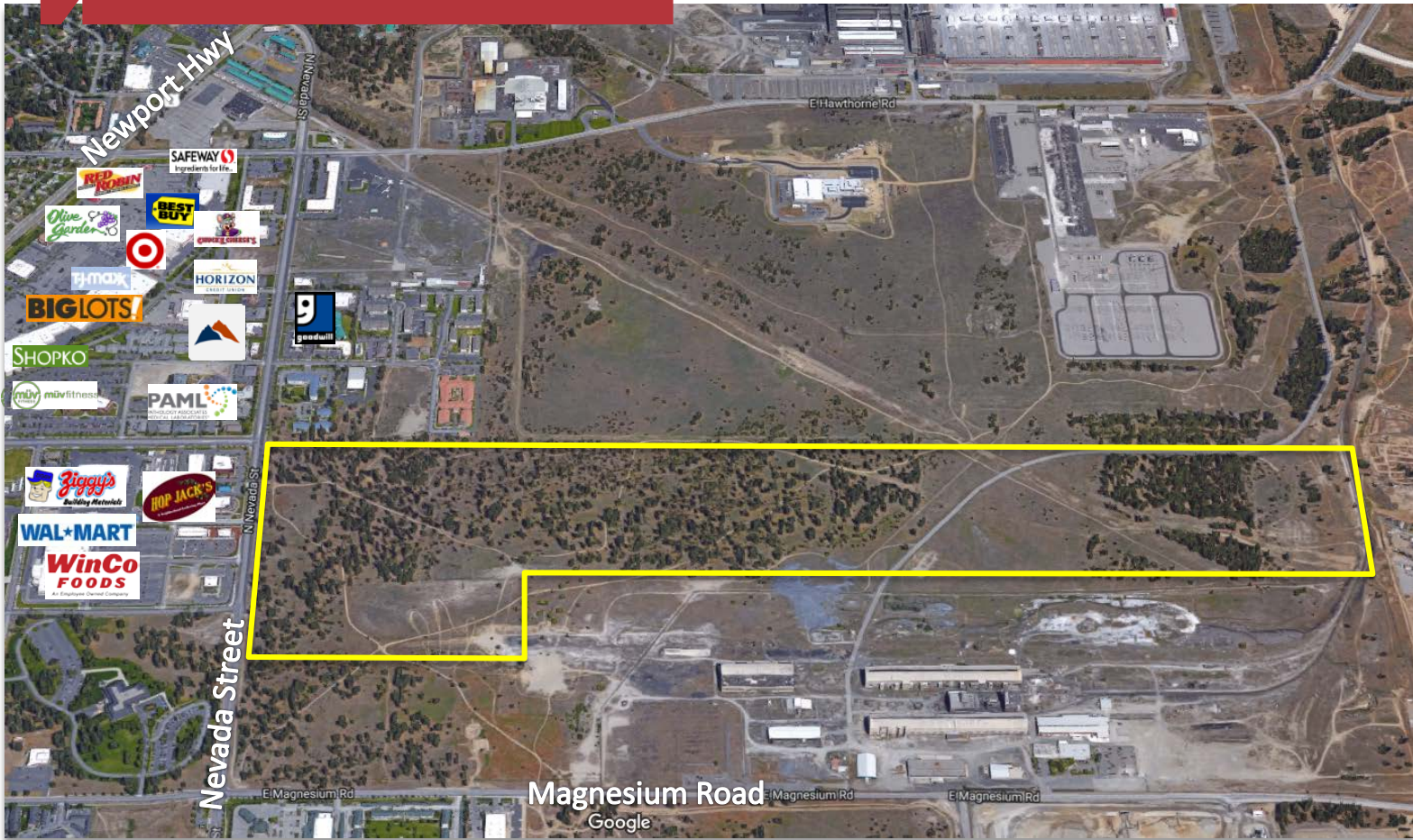


8600 N Nevada
Spokane, WA

NAIBlack



Ground Lease Available

Property Features

- Lot Size: 117.86 Acres ±
- Zoning: Outside City Zoning
- Located near new retail developments
- Highly visible corner location with a traffic signal
- Parcel Numbers:
 - 36206.9040-.9044 (72.37 Acres ±)
 - 36215.9026 (45.49 Acres ±)

For More Information, Contact:

Chris Bell

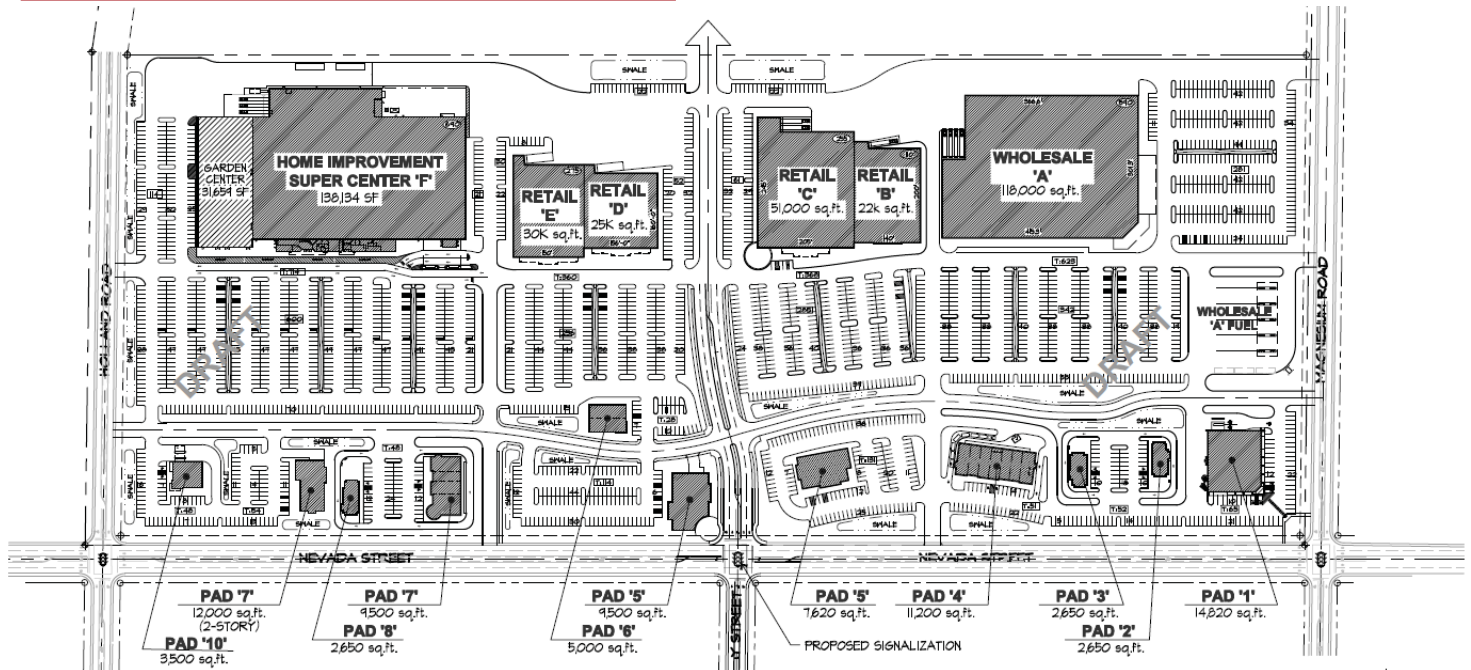
+1 509 622 3538

cbell@naiblack.com

NO WARRANTY OR REPRESENTATION, EXPRESS OR IMPLIED, IS MADE AS TO THE ACCURACY OF THE INFORMATION CONTAINED HEREIN, AND THE SAME IS SUBMITTED SUBJECT TO ERRORS, OMISSIONS, CHANGE OF PRICE, RENTAL OR OTHER CONDITIONS, PRIOR SALE, LEASE OR FINANCING, OR WITHDRAWAL WITHOUT NOTICE, AND OF ANY SPECIAL LISTING CONDITIONS IMPOSED BY OUR PRINCIPALS NO WARRANTIES OR REPRESENTATIONS ARE MADE AS TO THE CONDITION OF THE PROPERTY OR ANY HAZARDS CONTAINED THEREIN OR ANY TO BE IMPLIED.

Black Commercial, Inc.
801 W Riverside, Suite 300
Spokane, WA 99201
+1 509 623 1000
naiblack.com

8600 N Nevada Spokane, WA

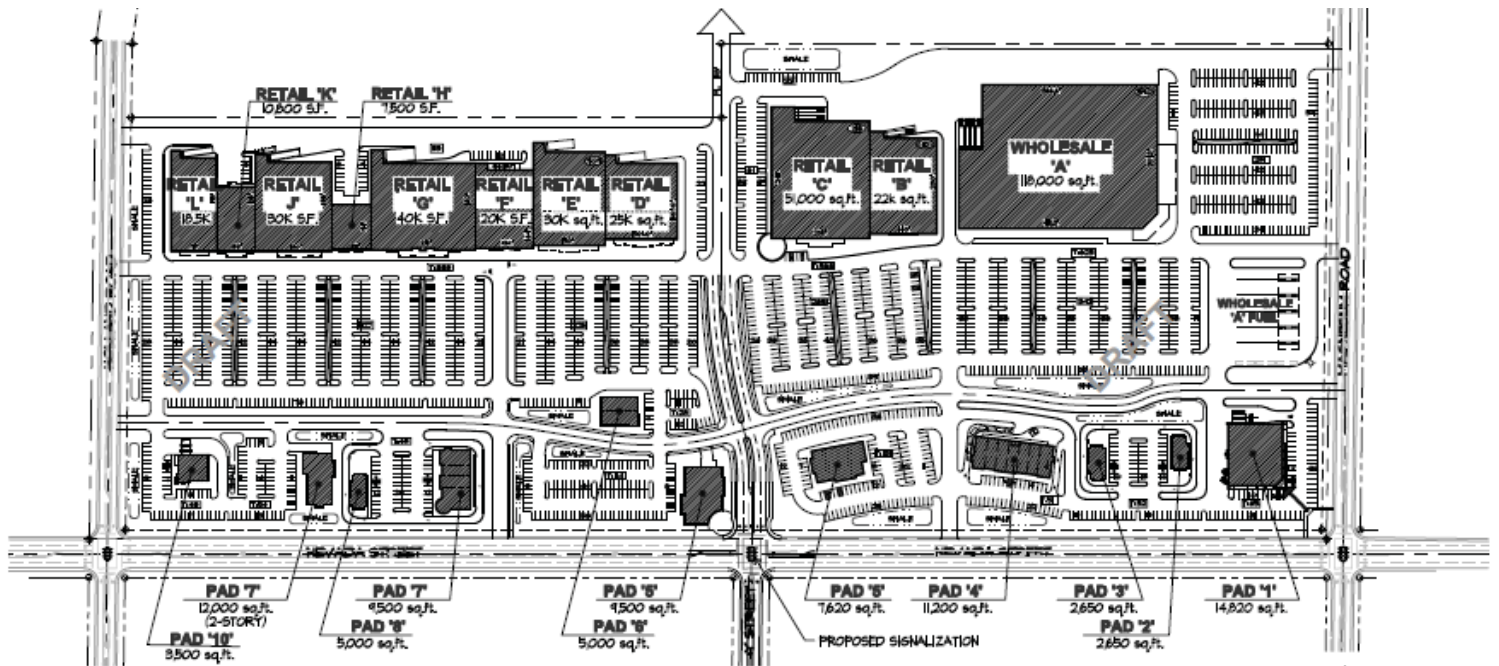


PSP.01A PRELIMINARY SITE PLAN # 01A
SCALE: 1"=200'-0" • FEBRUARY 28, 2007 • 07-250

0 100' 200' 400'

BERNARDO WILLS
ARCHITECTS PC

107 S HOWARD, FOURTH FLOOR
SPOKANE, WA 99201
509.838.4513
FAX 509.838.4605
WWW.BERNARDOWILLS.COM



PSP.02 PRELIMINARY SITE PLAN # 02
SCALE: 1"=200'-0" • FEBRUARY 28, 2007 • 07-250

0 100' 200' 400'

BERNARDO WILLS
ARCHITECTS PC

107 S HOWARD, FOURTH FLOOR
SPOKANE, WA 99201
509.838.4513
FAX 509.838.4605
WWW.BERNARDOWILLS.COM

NO WARRANTY OR REPRESENTATION, EXPRESS OR IMPLIED, IS MADE AS TO THE ACCURACY OF THE INFORMATION CONTAINED HEREIN, AND THE SAME IS SUBMITTED SUBJECT TO ERRORS, OMISSIONS, CHANGE OF PRICE, RENTAL OR OTHER CONDITIONS, PRIOR SALE, LEASE OR FINANCING, OR WITHDRAWAL WITHOUT NOTICE, AND OF ANY SPECIAL LISTING CONDITIONS IMPOSED BY OUR PRINCIPALS NO WARRANTIES OR REPRESENTATIONS ARE MADE AS TO THE CONDITION OF THE PROPERTY OR ANY HAZARDS CONTAINED THEREIN OR ANY TO BE IMPLIED.

Black Commercial, Inc.
801 W Riverside, Suite 300
Spokane, WA 99201
+1 509 623 1000
naiblack.com