

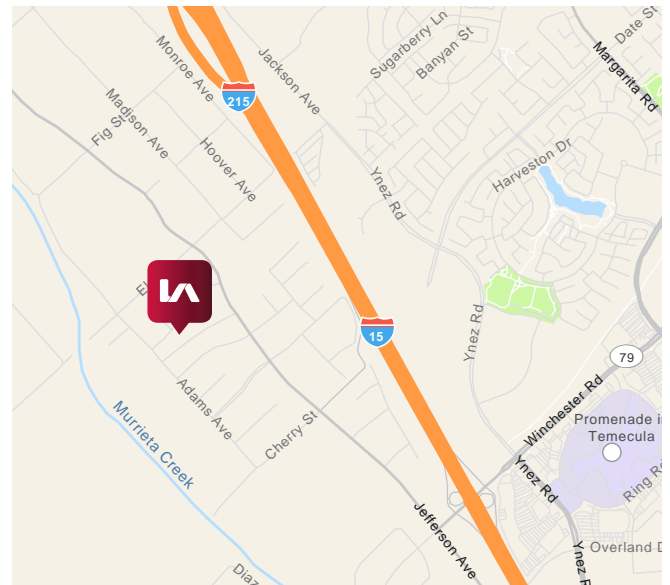
±2,520 SF MULTI-TENANT INDUSTRIAL SPACE FOR LEASE

26372 DEERE CT., UNITS F & G | MURRIETA, CA



PROPERTY HIGHLIGHTS:

- Suite Sizes from 1,260 SF to 2,520 SF
- ±21,360 SF of Multi-Tenant Industrial Building
- Units Include the Following:
 - 1 10'x10' GL Door
 - 1 Office
 - 1 Restroom
 - 14' Clear Height
 - Sprinklered
 - HVAC in Office
 - 200 AMP, 3-Phase Electric
- Flexible Lease Terms
- Concrete driveways and parking area
- Access from two streets



LEASE RATE:
\$1.05 PSF/MG

Gordon Mize

951.445.4504
gmize@leetemecula.com
DRE #01275376

Sam Robles

951.445.4519
srobles@leetemecula.com
DRE #01982449

No warranty or representation has been made to the accuracy of the foregoing information. Terms of sale or lease and availability are subject to change or withdrawal without notice. Lee & Associates Commercial Real Estate Services, Inc. - Riverside. 25240 Hancock Avenue, Suite 100 - Murrieta, CA 92562 Corporate ID# 01048055

±2,520 SF MULTI-TENANT INDUSTRIAL SPACE FOR LEASE

26372 DEERE CT., UNITS F & G | MURRIETA, CA



Gordon Mize

951.445.4504

gmize@leetemecula.com

DRE #01275376

Sam Robles

951.445.4519

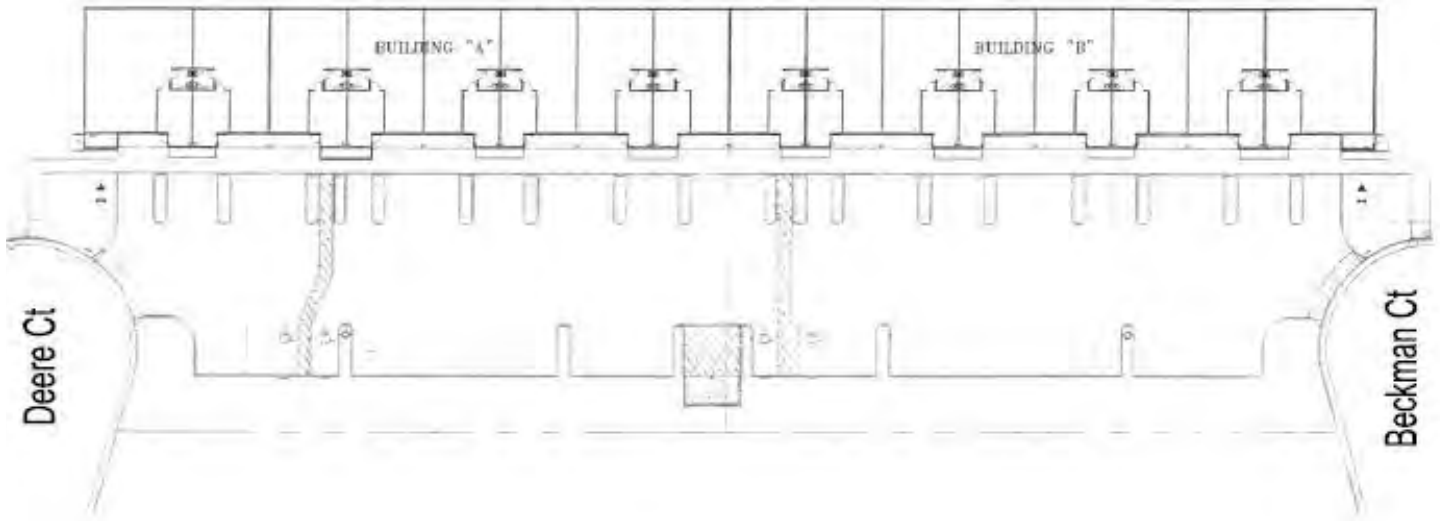
srobles@leetemecula.com

DRE #01982449

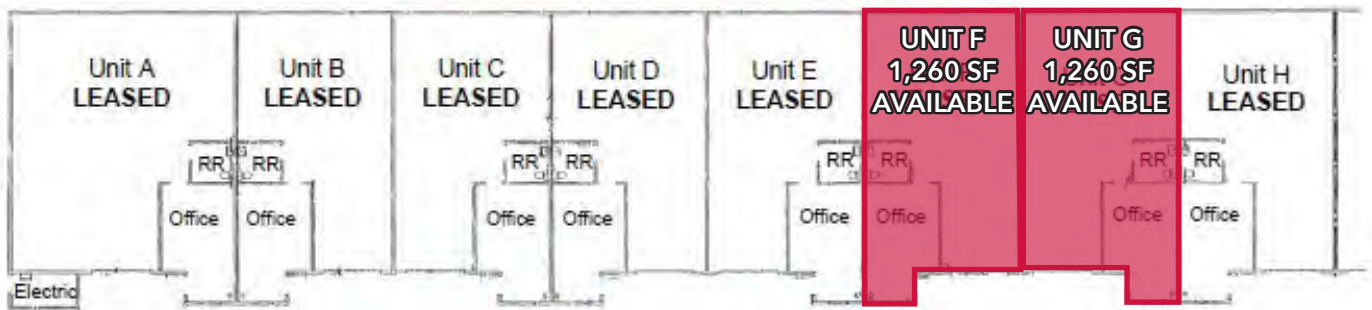
No warranty or representation has been made to the accuracy of the foregoing information. Terms of sale or lease and availability are subject to change or withdrawal without notice. Lee & Associates Commercial Real Estate Services, Inc. - Riverside. 25240 Hancock Avenue, Suite 100 - Murrieta, CA 92562 Corporate ID# 01048055

±2,520 SF MULTI-TENANT INDUSTRIAL SPACE FOR LEASE

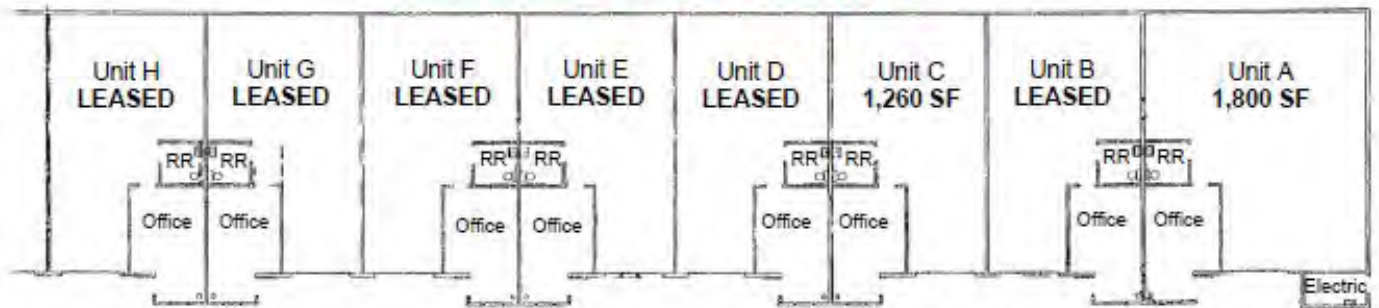
26372 DEERE CT., UNITS F & G | MURRIETA, CA



Deere Court - Building "A"



Beckman Court - Building "B"



Gordon Mize

951.445.4504
gmize@leetemecula.com
DRE #01275376

Sam Robles

951.445.4519
srobles@leetemecula.com
DRE #01982449

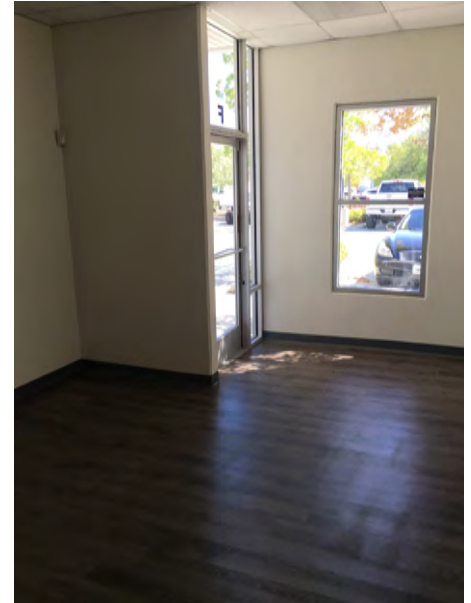
No warranty or representation has been made to the accuracy of the foregoing information. Terms of sale or lease and availability are subject to change or withdrawal without notice. Lee & Associates Commercial Real Estate Services, Inc. - Riverside. 25240 Hancock Avenue, Suite 100 - Murrieta, CA 92562 Corporate ID# 01048055

±2,520 SF MULTI-TENANT INDUSTRIAL SPACE FOR LEASE

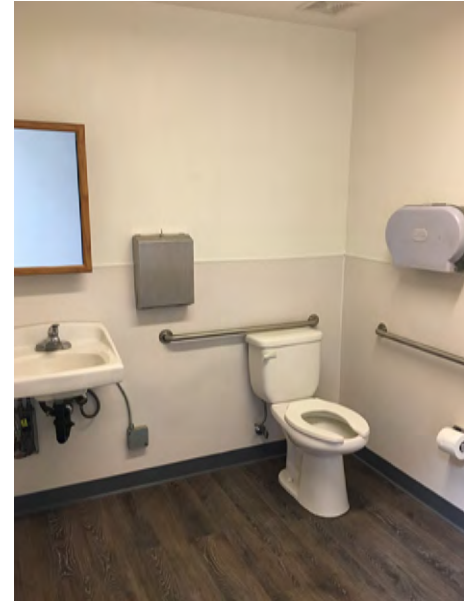
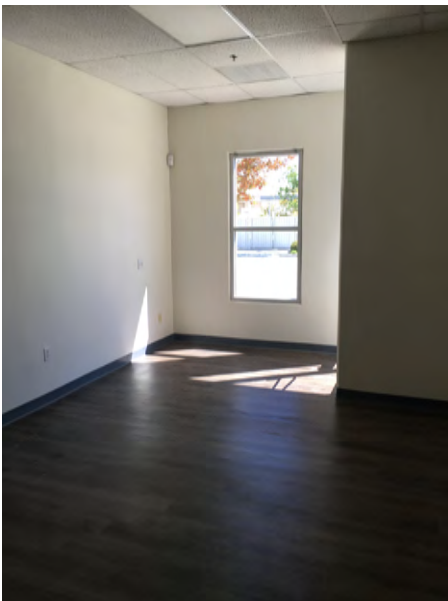
26372 DEERE CT., UNITS F & G | MURRIETA, CA



SUITE F:



SUITE G:



Gordon Mize

951.445.4504
gmize@leetemecula.com
DRE #01275376

Sam Robles

951.445.4519
srobles@leetemecula.com
DRE #01982449

No warranty or representation has been made to the accuracy of the foregoing information. Terms of sale or lease and availability are subject to change or withdrawal without notice. Lee & Associates Commercial Real Estate Services, Inc. - Riverside. 25240 Hancock Avenue, Suite 100 - Murrieta, CA 92562 Corporate ID# 01048055

±2,520 SF MULTI-TENANT INDUSTRIAL SPACE FOR LEASE

26372 DEERE CT., UNITS F & G | MURRIETA, CA



CORPORATE NEIGHBORS

Gordon Mize
951.445.4504
gmize@leetemecula.com
DRE #01275376

Sam Robles
951.445.4519
srobles@leetemecula.com
DRE #01982449

No warranty or representation has been made to the accuracy of the foregoing information. Terms of sale or lease and availability are subject to change or withdrawal without notice. Lee & Associates Commercial Real Estate Services, Inc. - Riverside. 25240 Hancock Avenue, Suite 100 - Murrieta, CA 92562 Corporate ID# 01048055