

SCHOFIELD BLOCK

606 Main Street
Vancouver, WA 98660

Ground Floor Retail

Main Floor: Approximately
2,000 SF

Plus approximately 2,000 SF
basement (included, no
extra charge)

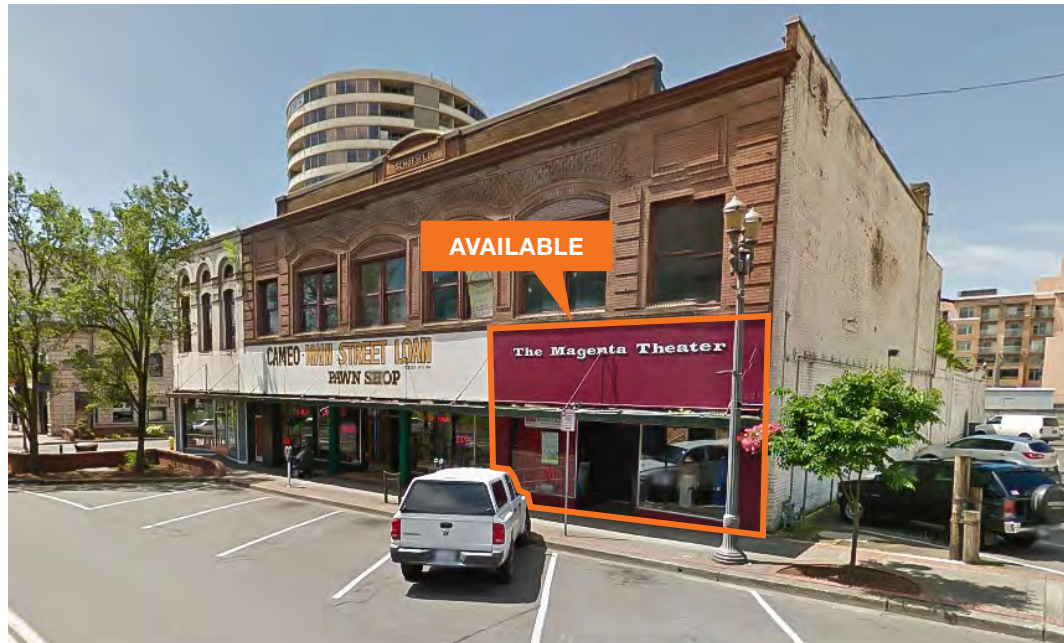
Monthly Base Rent: \$3,000
plus NNN

Delivered in shell condition
with HVAC and ADA restroom

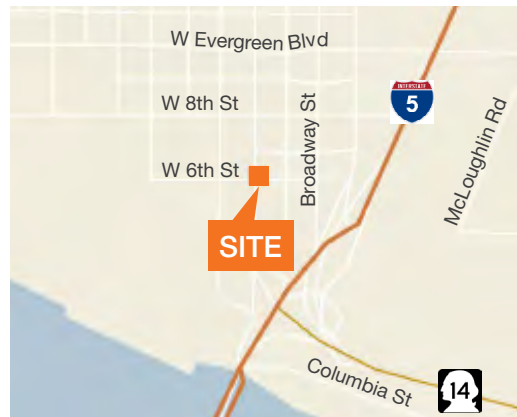
Open floor plan, high ceilings
and exposed brick

Entire Schofield Block being
redeveloped

Participant in City of
Vancouver Adaptive Reuse
Program



Location



Contact

Caryl Brown
Vice President
503.721.2725
cbrown@kiddermathews.com

Amenities



Location Overview

Premier corner at W 6th and Washington in the Vancouver Arts District

The Central Business District includes over 12,000 day time employees

Urban core amenities include over 100 retailers and restaurants, the 83,000 SF regional library, 12 screen movie theater, a Hilton Hotel (226 rooms), 30,000 SF convention center and numerous parks

A 45,000 SF lifestyle office building, 101 Building, is being constructed across the street for Killian Pacific and two other office tenants and will be 100% leased when it opens Q1 2016

Contact

Caryl Brown
 503.721.2725
 cbrown@kiddermathews.com