

CASCADE PLAZA

903 EAST MAIN STREET, AUBURN, WA

AUBURN RETAIL/OFFICE FOR LEASE



FEATURES

- Ideal space for one-person office
- Great Auburn location
- Building and street signage available
- Good access from Highway 18
- Abundant parking
- Lots of windows and north facing natural light

LEASE INFORMATION

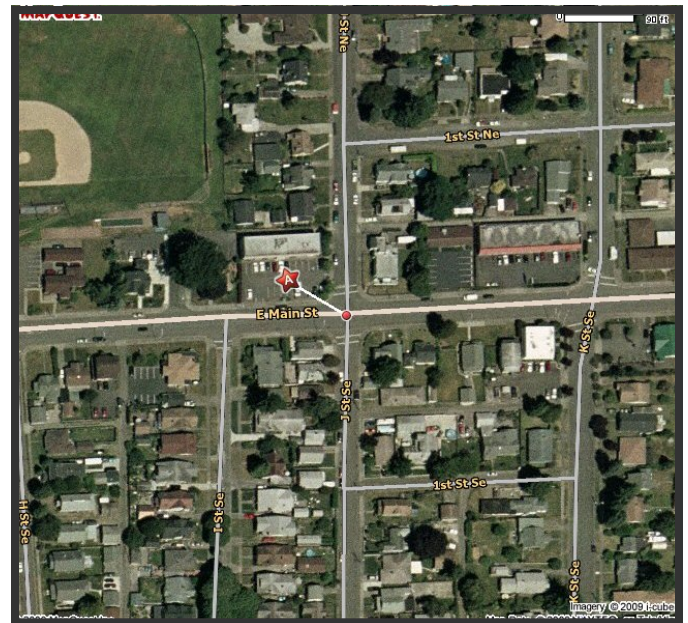
Lease Type	<i>Gross</i>
Rent	<i>\$220/mo</i>
Availability	<i>Immediately</i>
Space Available	
<i>All Suites</i>	<i>165 SF Each</i>

*Ste 208 & 210 can be combined for a total 330 SF

FOR MORE INFORMATION CONTACT

MICHAEL AZOSE

Direct: 425-974-4209
Cell: 206-856-7576
mazose@mpiha.com



MORRIS PIHA REAL ESTATE SERVICES

14100 SE 36TH STREET, STE 200
BELLEVUE, WA 98006
425-643-8400
WWW.MPIHA.COM

