

FOR SALE

1243 Pennsylvania Ave  
Southport, NY

## 16,423 SF Office Building For Sale

### Property Highlights

- Former Guthrie Pine City Medical Office
- Large reception area, multiple exam/treatment rooms, private offices, back office space, storage areas, etc.
- Three-car detached garage
- Covered parking as well as a large open-air paved parking area
- Property would lend itself to other general office uses, a group home or senior care facility

### Location Highlights

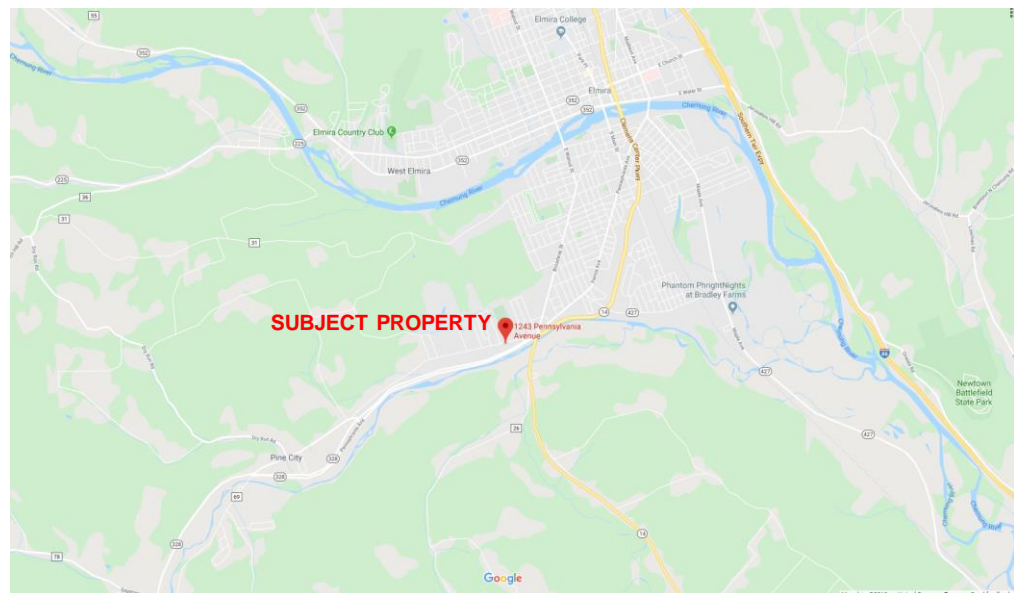
- Residential area near "Bulkhead" and the commercial strip
- Corner of Pennsylvania Ave. & Furman Rd
- Close to the NY/PA border

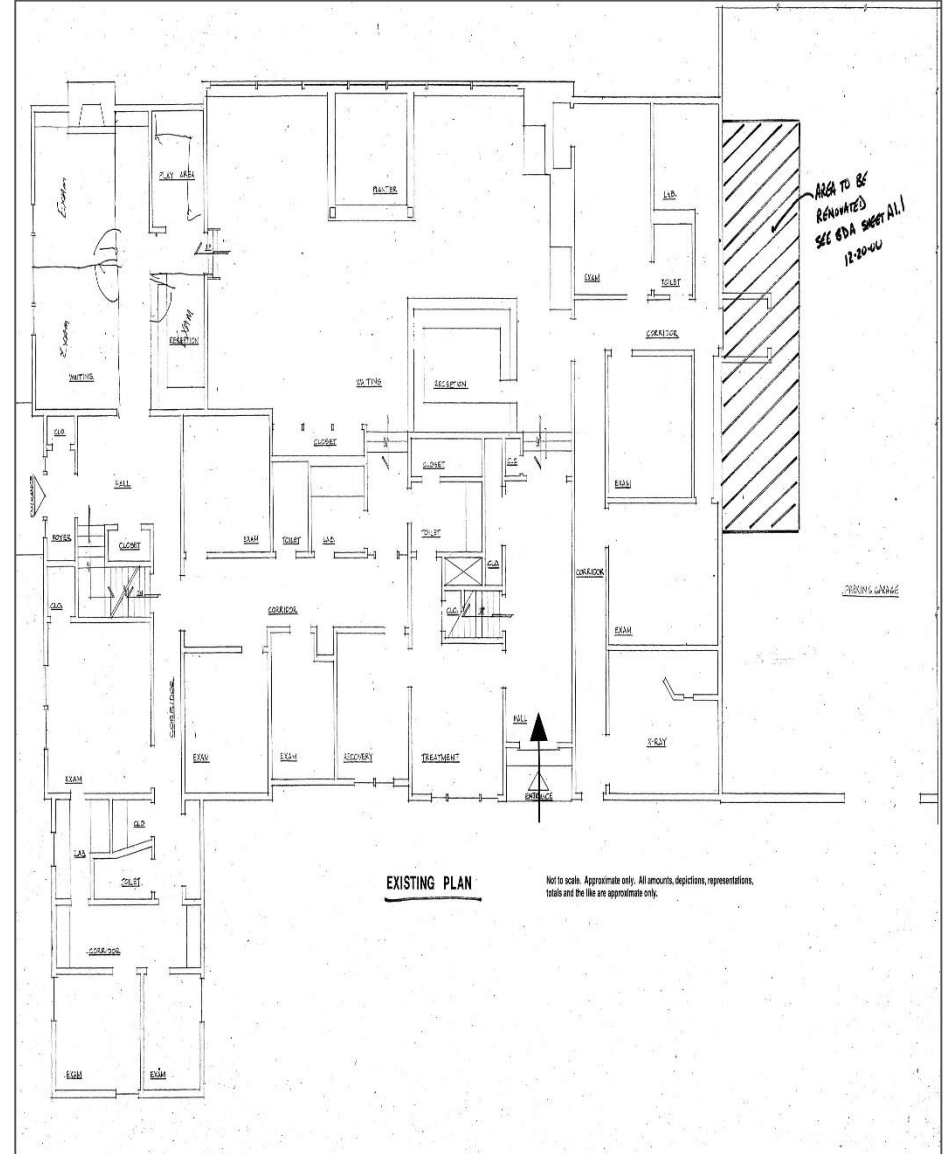
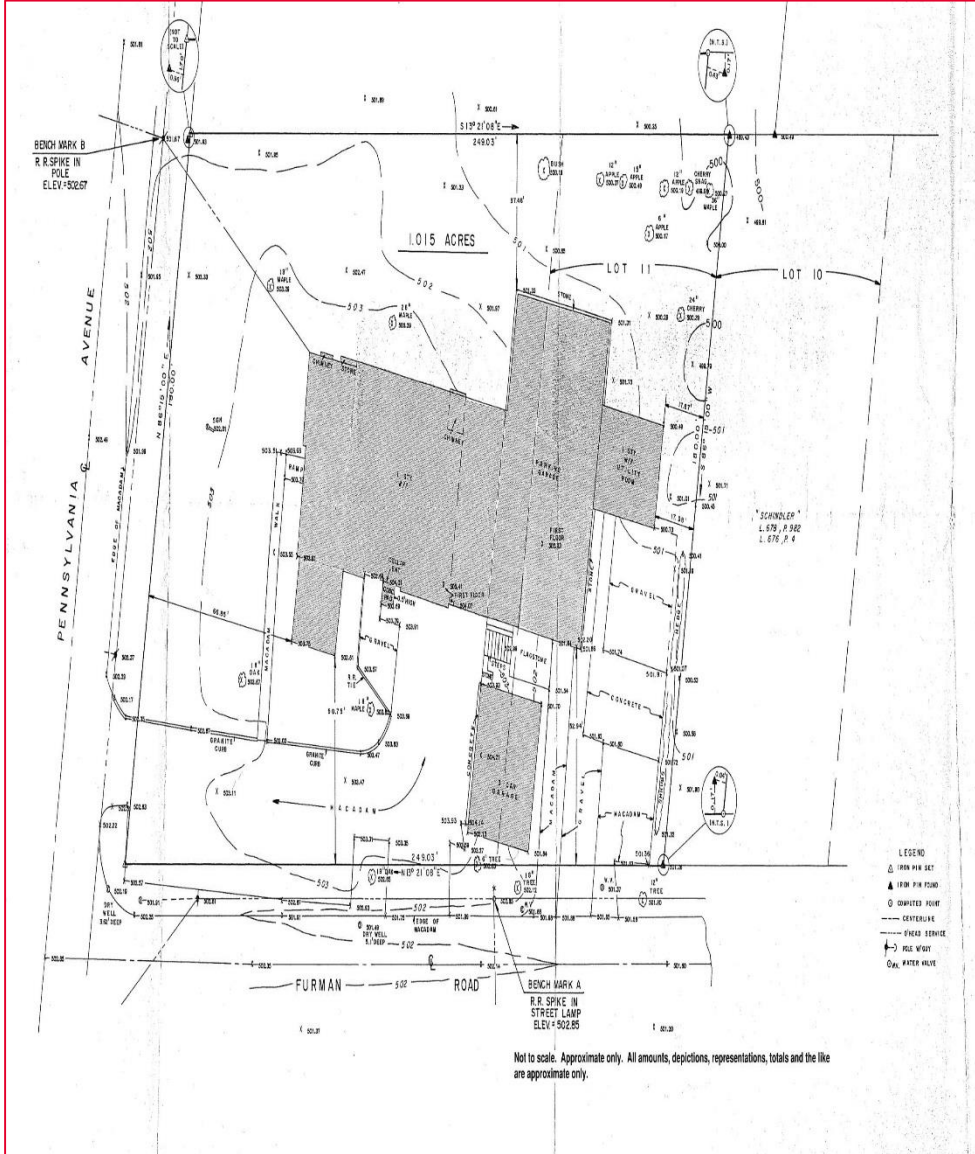
For more information, contact:

**Ronald N. Panosian**  
Associate Real Estate Broker  
607 426 5282  
[rpanosian@pyramidbrokerage.com](mailto:rpanosian@pyramidbrokerage.com)

8 Denison Parkway East, Suite 401  
Corning, New York 14830  
phone: +1 607 937 9720

[pyramidbrokerage.com](http://pyramidbrokerage.com)





FOR SALE  
1243 Pennsylvania Ave  
Southport, NY



FOR SALE  
1243 Pennsylvania Ave  
Southport, NY

