

For Lease

# Office Suites

1,929 RSF & 2,604 RSF



## Inspirus Credit Union Building

3405 188th Street NW, Lynnwood, WA 98037

- **Suite 201 – 1,929 RSF.** - Lease ready space with new finishes. Open floor plan with small storage closet.
- **Suite 302- 2,604 RSF.** - Lease ready space. Reception area, open area, four private offices, large team room, and work/break room with coffee bar.
- One block to Alderwood Mall and walking distance to retail, restaurants, and other amenities
- Abundant surface parking

For more information:

**Wyk Parker**

+1 206 332 1484 • [wparker@nai-psp.com](mailto:wparker@nai-psp.com)

**Richie Sander**

+1 425 586 5609 • [rsander@nai-psp.com](mailto:rsander@nai-psp.com)



BELLEVUE | SEATTLE | TACOMA

1700 Seventh Avenue, Suite 2050

Seattle, WA 98101

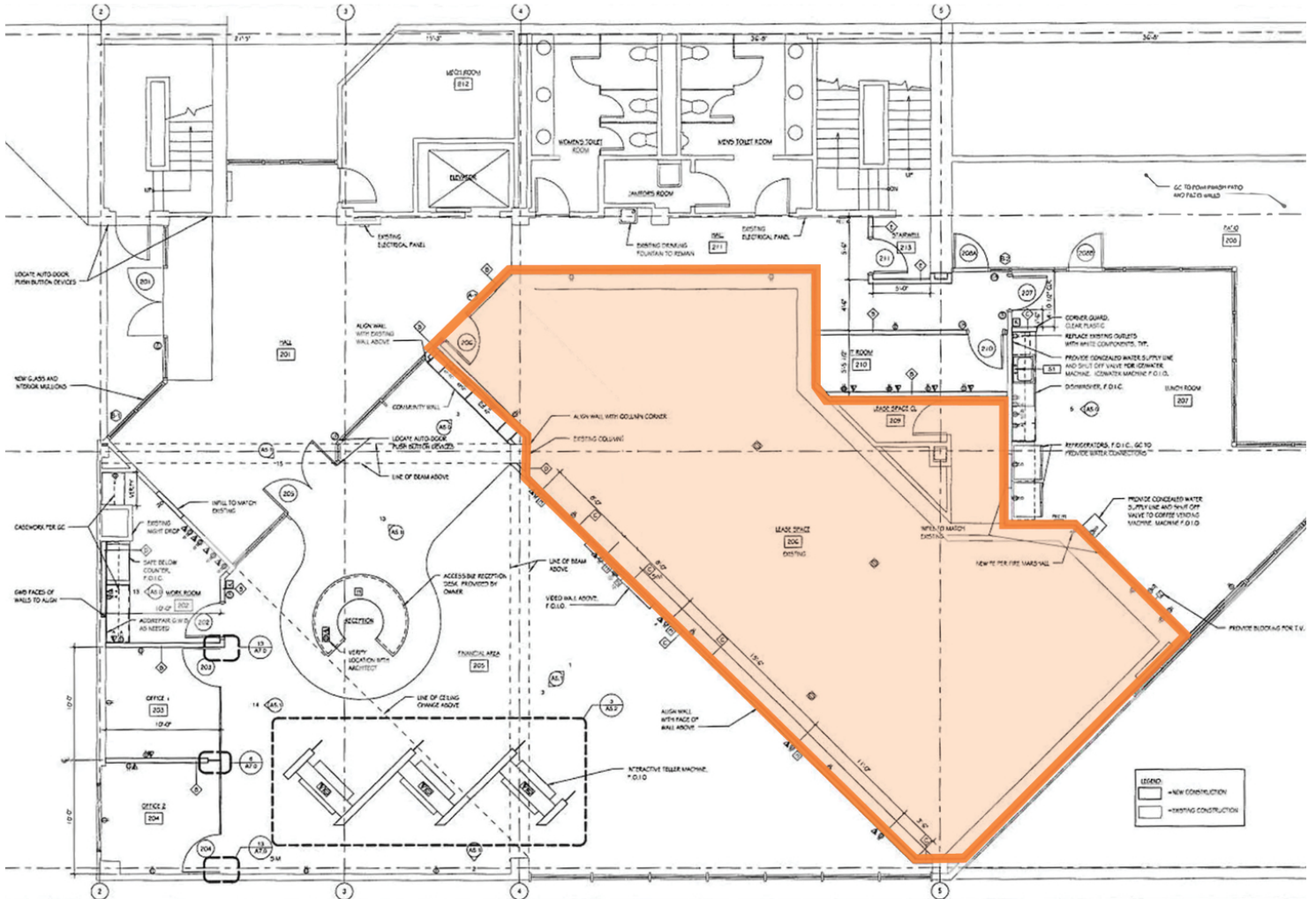
+1 206 332 1466

[nai-psp.com](http://nai-psp.com)

THE INFORMATION CONTAINED HEREIN HAS BEEN GIVEN TO US BY THE OWNER OF THE PROPERTY OR OTHER SOURCES WE DEEM RELIABLE, WE HAVE NO REASON TO DOUBT ITS ACCURACY, BUT WE DO NOT GUARANTEE IT. ALL INFORMATION SHOULD BE VERIFIED PRIOR TO PURCHASE OR LEASE.

Office for Lease

# Inspirus Credit Union Building



**1** SUITE 201 - 1,929 RSF  
Lease ready space with new finishes. Open floor plan with small storage closet.



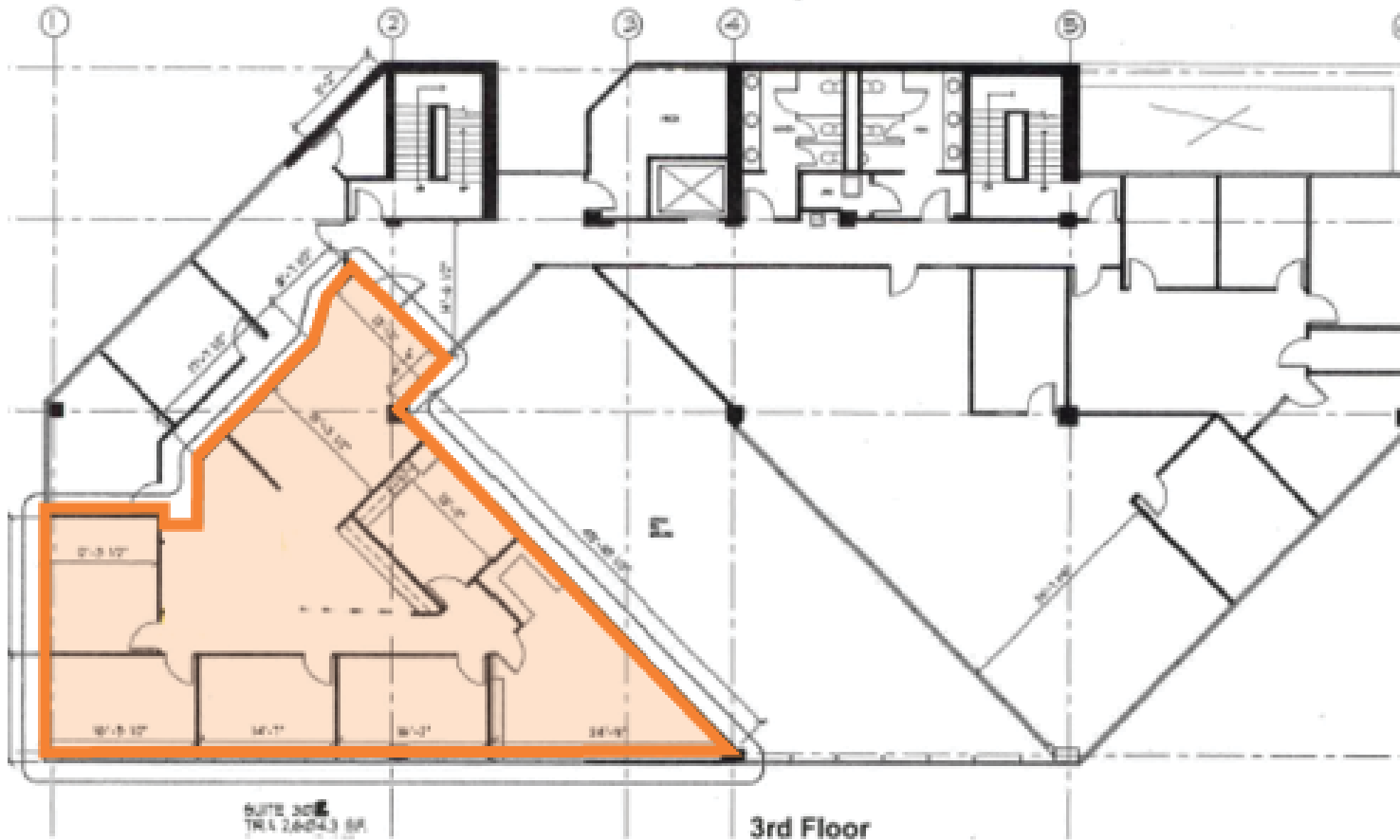
1700 Seventh Avenue, Suite 2050  
Seattle, WA 98101  
+1 206 332 1466  
[nai-psp.com](http://nai-psp.com)

BELLEVUE | SEATTLE | TACOMA

THE INFORMATION CONTAINED HEREIN HAS BEEN GIVEN TO US BY THE OWNER OF THE PROPERTY OR OTHER SOURCES WE DEEM RELIABLE, WE HAVE NO REASON TO DOUBT ITS ACCURACY, BUT WE DO NOT GUARANTEE IT. ALL INFORMATION SHOULD BE VERIFIED PRIOR TO PURCHASE OR LEASE.

Office for Lease

# Inspirus Credit Union Building



- 1 SUITE 302 - 2,604 RSF  
Lease ready space. Reception area, open area, four private offices, large team room, and work/break room with coffee bar.



1700 Seventh Avenue, Suite 2050  
Seattle, WA 98101  
+1 206 332 1466  
[nai-psp.com](http://nai-psp.com)

BELLEVUE | SEATTLE | TACOMA

THE INFORMATION CONTAINED HEREIN HAS BEEN GIVEN TO US BY THE OWNER OF THE PROPERTY OR OTHER SOURCES WE DEEM RELIABLE, WE HAVE NO REASON TO DOUBT ITS ACCURACY, BUT WE DO NOT GUARANTEE IT. ALL INFORMATION SHOULD BE VERIFIED PRIOR TO PURCHASE OR LEASE.

Office for Lease

# Inspirus Credit Union Building



1700 Seventh Avenue, Suite 2050  
Seattle, WA 98101  
+1 206 332 1466  
[nai-psp.com](http://nai-psp.com)

BELLEVUE | SEATTLE | TACOMA

THE INFORMATION CONTAINED HEREIN HAS BEEN GIVEN TO US BY THE OWNER OF THE PROPERTY OR OTHER SOURCES WE DEEM RELIABLE, WE HAVE NO REASON TO DOUBT ITS ACCURACY, BUT WE DO NOT GUARANTEE IT. ALL INFORMATION SHOULD BE VERIFIED PRIOR TO PURCHASE OR LEASE.