

**AVAILABLE FOR LEASE**

**2095 HAMMOND DRIVE, SCHAUMBURG, IL**



**BUILDING SPECIFICATIONS**

<b>BUILDING SIZE:</b>	± 31,954 SF
<b>AVAILABLE:</b>	± 15,539 SF
<b>SITE AREA:</b>	2.68 acres
<b>CEILING HEIGHT:</b>	20' clear
<b>LOADING:</b>	1 interior docks 3 exterior docks (cold)
<b>POWER:</b>	1,100 amps, 277/480 volts, 3-phase
<b>SPRINKLER:</b>	Wet
<b>PARKING:</b>	45 spaces
<b>LEASE RATE:</b>	\$5.95 psf net



**FEATURES**

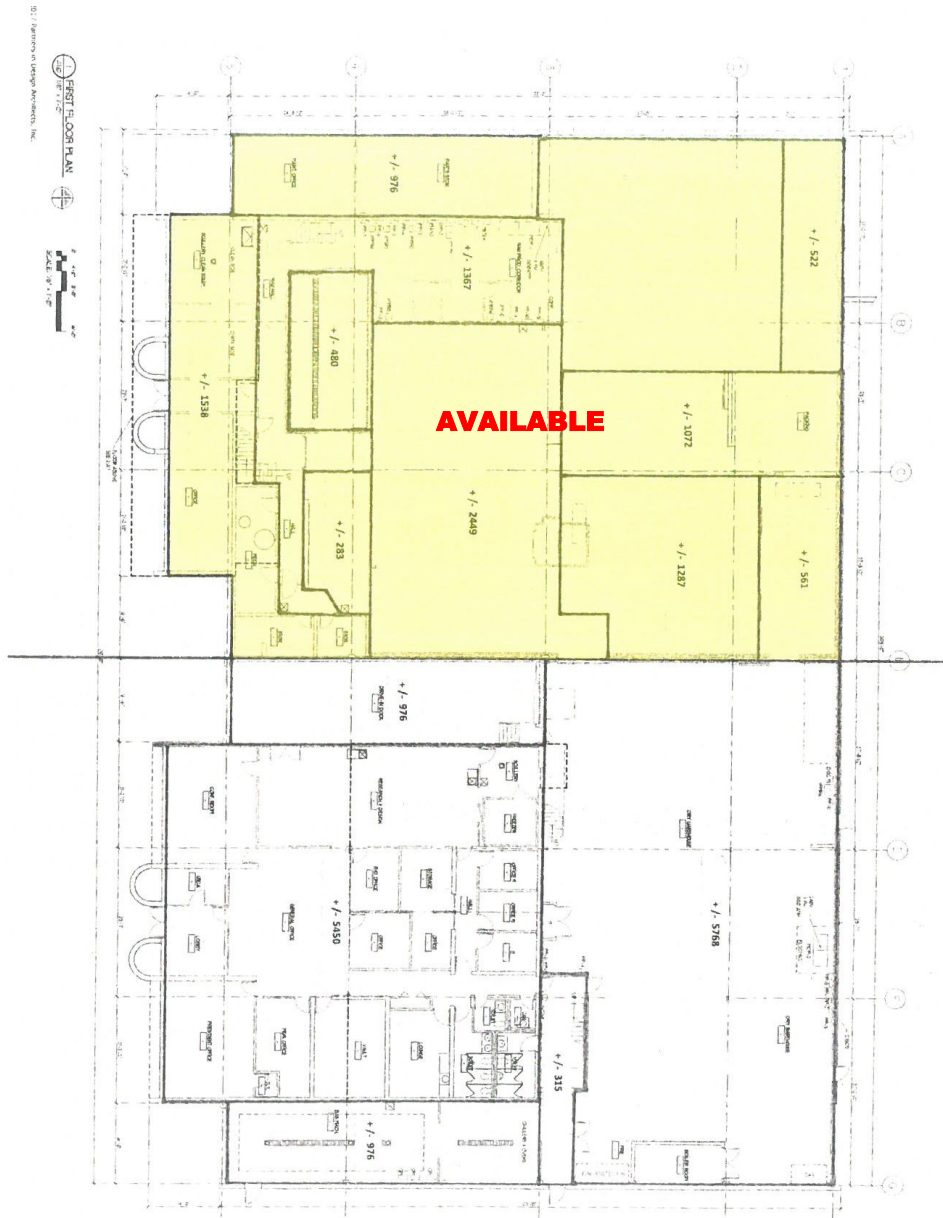
- USDA and FDA facility that was recently used for batching, cooking, assembly, freezing, and packaging

<p><b>FOR ADDITIONAL INFORMATION, PLEASE CONTACT:</b></p>	<p><b>MATTHEW LEWANDOWSKI</b> Vice President mlewandowski@darwinrealty.com</p>	<p><b>MANDY LEWANDOWSKI</b> Associate (630) 993-3851 mandy@darwinrealty.com</p>
---	--	---

**AVAILABLE FOR LEASE**

**2095 HAMMOND DRIVE, SCHAUMBURG, IL**

**MAIN FLOOR**



**FOR ADDITIONAL  
INFORMATION,  
PLEASE CONTACT:**

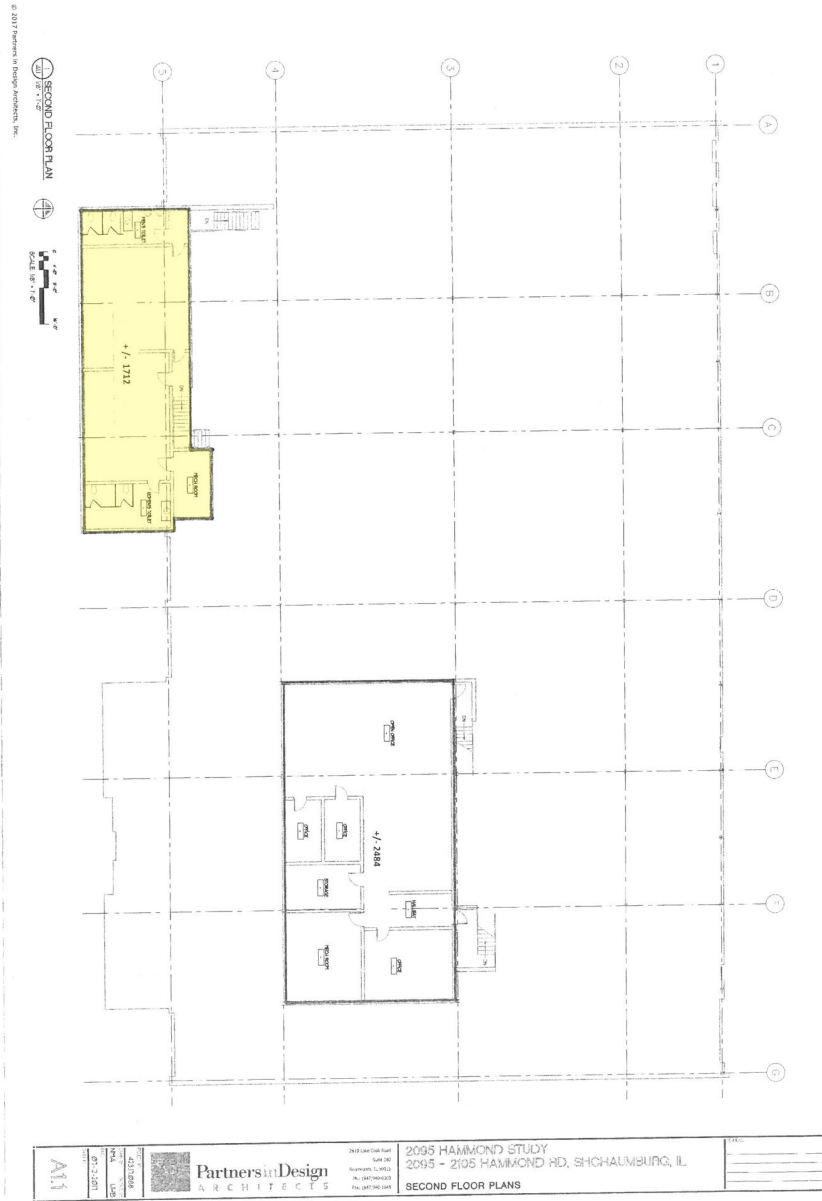
**MATTHEW LEWANDOWSKI**  
Vice President  
mlewandowski@darwinrealty.com

**MANDY LEWANDOWSKI**  
Associate  
(630) 993-3851  
mandy@darwinrealty.com

**AVAILABLE FOR LEASE**

**2095 HAMMOND DRIVE, SCHAUMBURG, IL**

**MEZZANINE LEVEL**

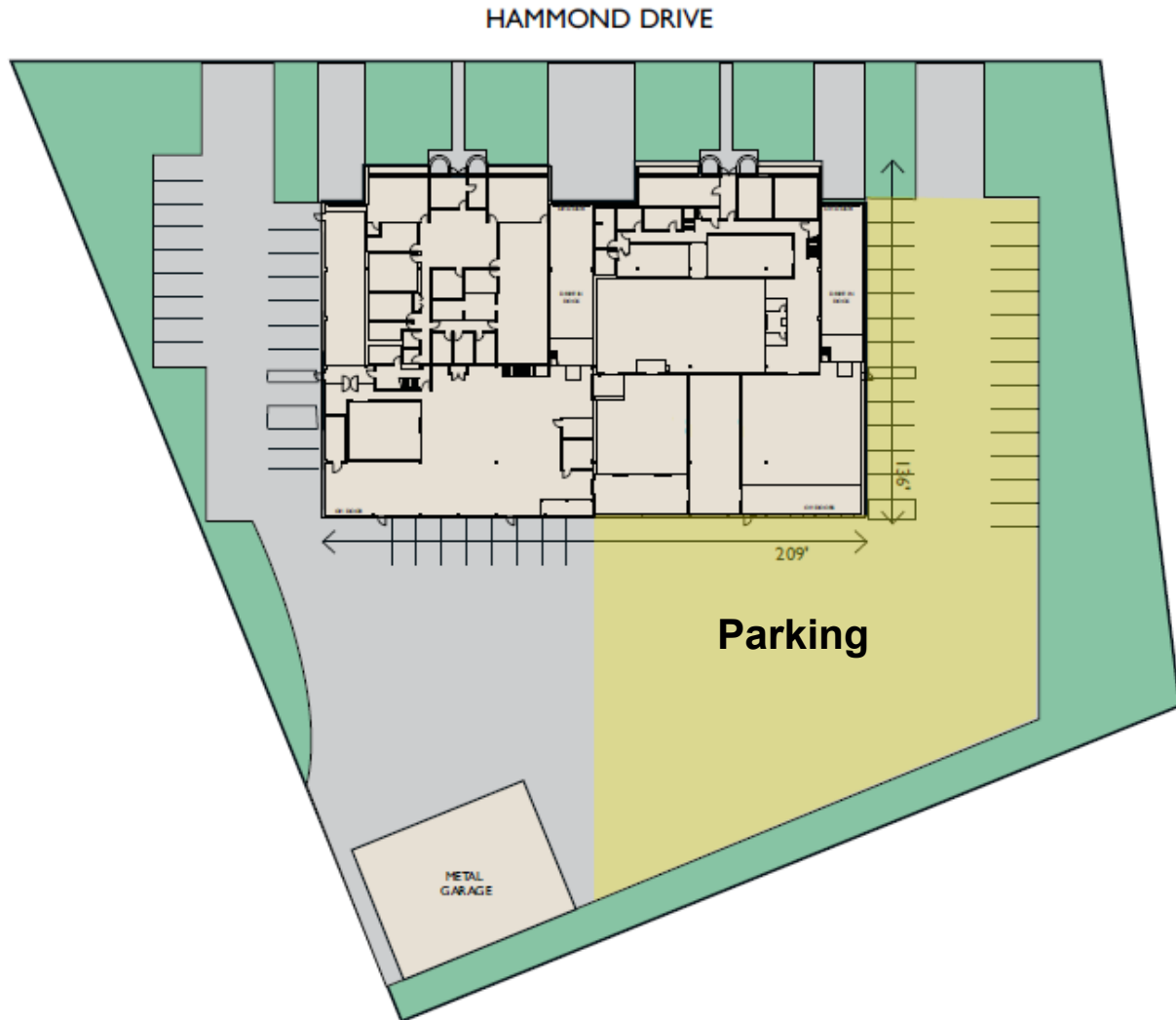


<p><b>FOR ADDITIONAL INFORMATION, PLEASE CONTACT:</b></p>	<p><b>MATTHEW LEWANDOWSKI</b> Vice President mlewandowski@darwinrealty.com</p>	<p><b>MANDY LEWANDOWSKI</b> Associate (630) 993-3851 mandy@darwinrealty.com</p>
---	--	---

**AVAILABLE FOR LEASE**

**2095 HAMMOND DRIVE, SCHAUMBURG, IL**

**PARKING**



**FOR ADDITIONAL  
INFORMATION,  
PLEASE CONTACT:**

**MATTHEW LEWANDOWSKI**  
Vice President  
mlewandowski@darwinrealty.com

**MANDY LEWANDOWSKI**  
Associate  
(630) 993-3851  
mandy@darwinrealty.com