

Westport Office Spaces Available For Lease

1850 CRAIGSHIRE ROAD
MARYLAND HEIGHTS, MO 63146



NEWMARK
ZIMMER

1850 CRAIGSHIRE ROAD, MARYLAND HEIGHTS, MO 63146

Building Summary

61,374 SF, three-story, Class B office building

Available Suites

Suite 100- 5,579 SF

Suite 203- 5,826 SF

Suite 207- 2,262 SF

Suite 304- 5,507 SF

Parking

Ratio: 4/1,000 SF

Covered parking available

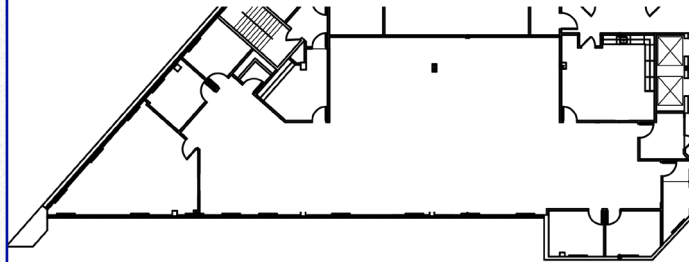
Location

Located in Westport within close proximity to Hwy 270 and Page Avenue

Lease Rate:

\$18.50/SF, fs

Suite 100 - 5,579 SF



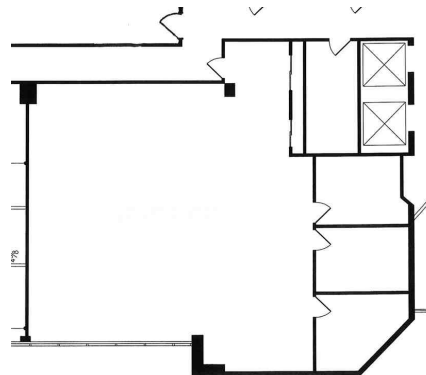
CLICK TO VIEW



Suite 203 - 5,826 SF



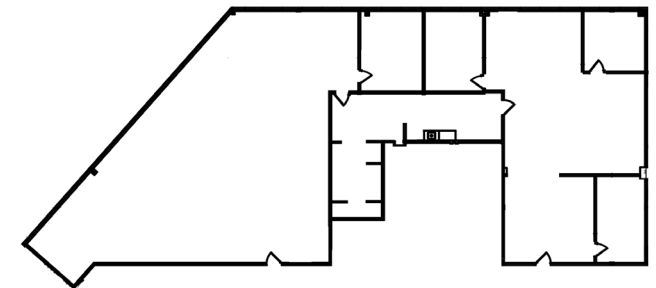
Suite 207 - 2,262 SF



CLICK TO VIEW



Suite 304 - 5,507 SF



CLICK TO VIEW





FOR FURTHER INFORMATION, PLEASE CONTACT:

Kevin McLaughlin, SIOR

Executive Managing Director, Principal

t 314-628-0436

kmclaughlin@nzimmer.com

Jay Travis

Associate

t 314-628-0442

jtravis@nzimmer.com

8235 Forsyth Boulevard, Suite 200

St. Louis, MO 63105

nmrkzimmer.com

NEWMARK

ZIMMER

The information contained herein has been obtained from sources deemed reliable but has not been verified and no guarantee, warranty or representation, either express or implied, is made with respect to such information. Terms of sale or lease and availability are subject to change or withdrawal without notice.