

84 MACOMB PLACE
MT. CLEMENS, MICHIGAN



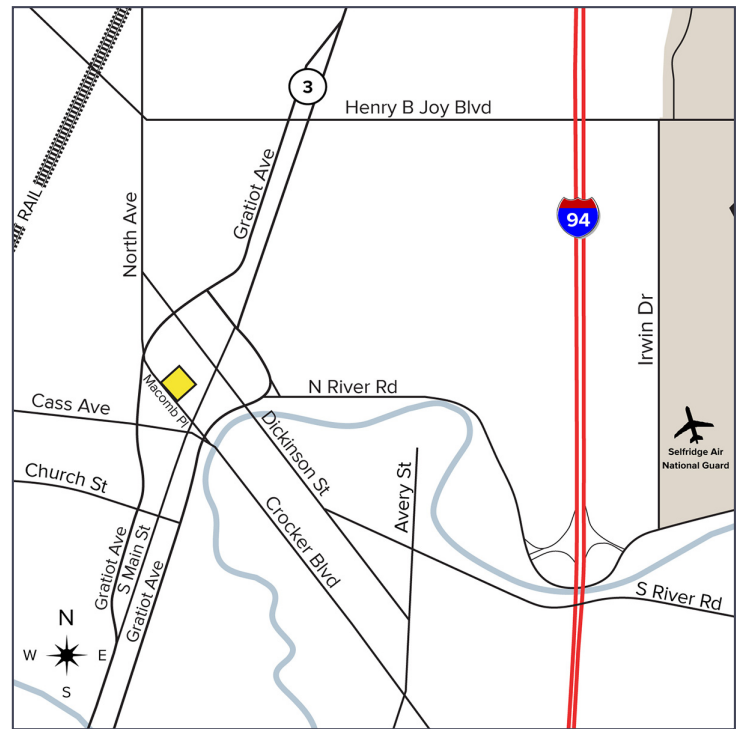
**SIGNATURE
ASSOCIATES**
KNOW SIGNATURE | KNOW RESULTS

RETAIL FOR SALE
2,660 Square Feet Available



PROPERTY FEATURES

- 2,660 available square feet
- Zoned Retail, CB
- 2 story building
- Built in 1910
- City lot with parking in rear
- Sale Price: \$195,000 (\$73.31/sq.ft.)



For more information, please contact:

JOE STACK
(248) 359 0615
jstack@signatureassociates.com

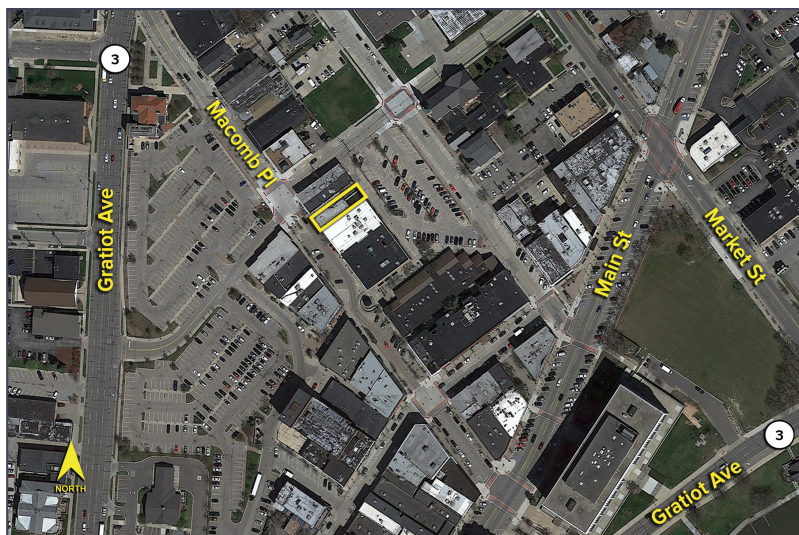
CHRIS MONSOUR
(248) 948 0107
cmonsour@signatureassociates.com

SIGNATURE ASSOCIATES
One Towne Square, Suite 1200
Southfield, MI 48076
www.signatureassociates.com

84 Macomb Place – Mt. Clemens, Michigan

Retail For Sale

2,660
Square Feet
AVAILABLE

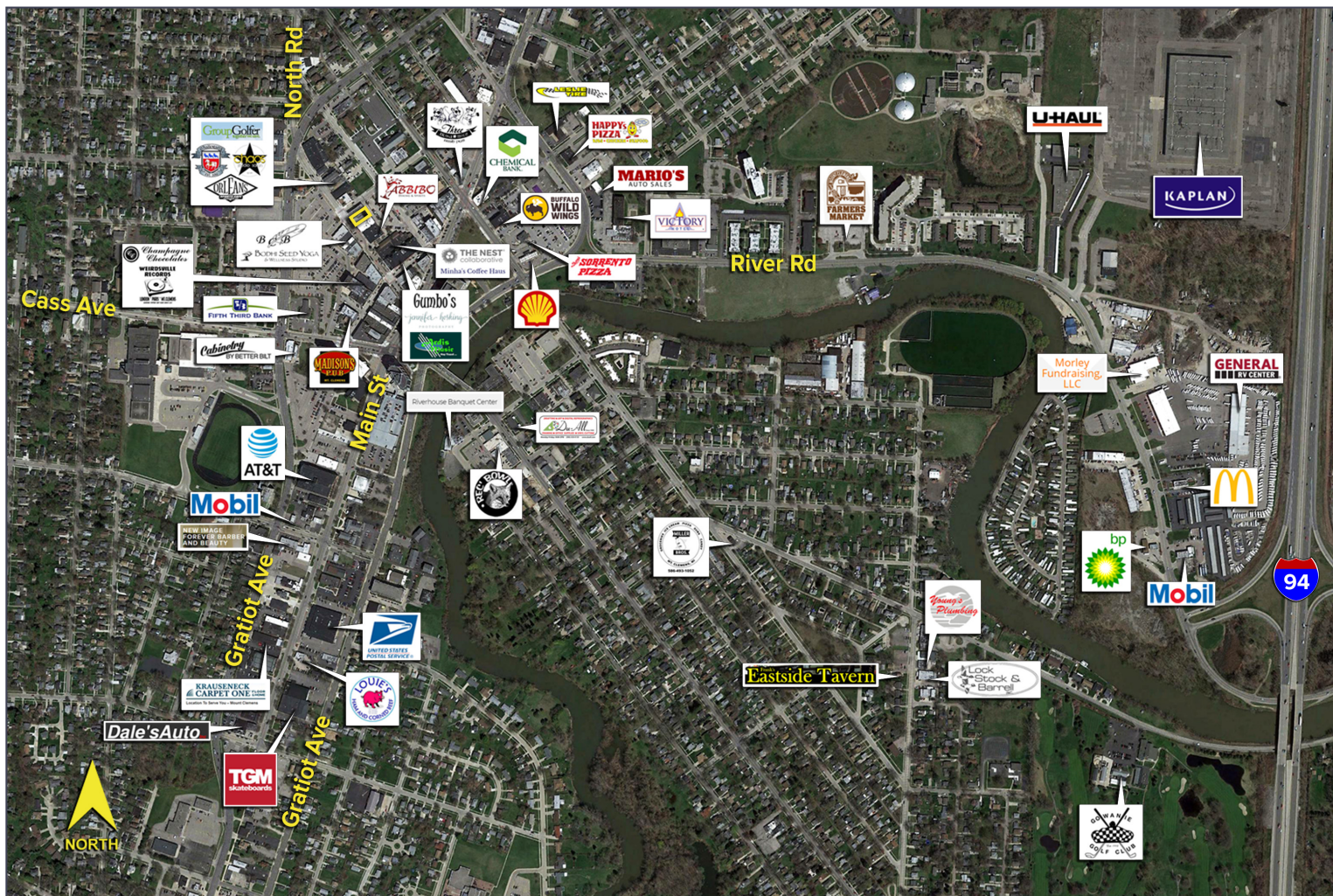


DEMOGRAPHICS

	POPULATION	MED. HH INCOME
1 MILE	12,946	\$44,828
3 MILE	81,726	\$60,647
5 MILE	210,151	\$68,010

TRAFFIC COUNTS (TWO-WAY)

9,875	N. Main St. N. of Cass Ave. 2-Way
22,774	Cass Ave. E. of N. Main St. 2-Way
20,112	Cass Ave. W. of N. Main St. 2-Way



For more information, please contact:

JOE STACK
(248) 359 0615
jstack@signatureassociates.com

CHRIS MONSOUR
(248) 948 0107
cmonsour@signatureassociates.com

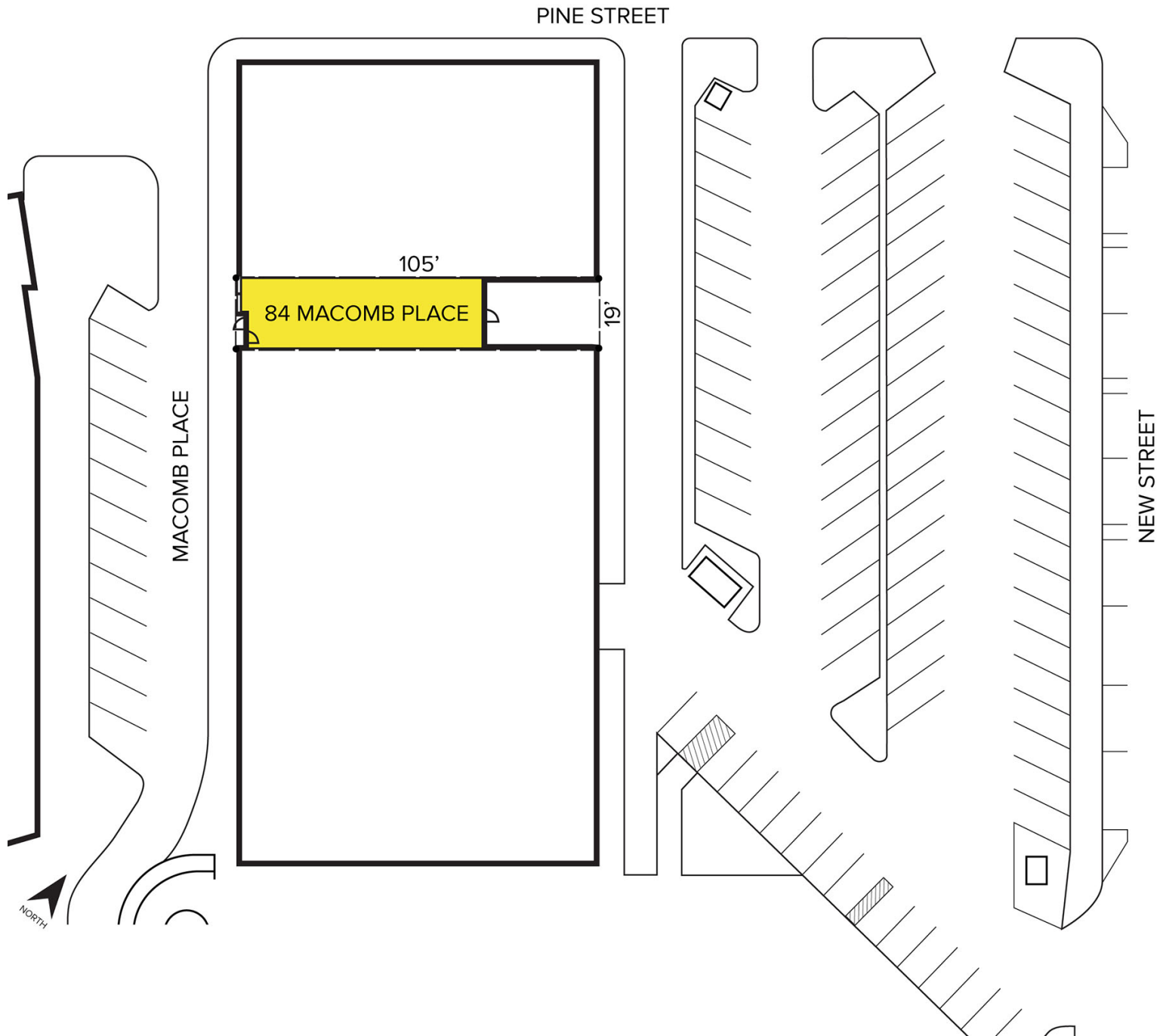
SIGNATURE ASSOCIATES
One Towne Square, Suite 1200
Southfield, MI 48076
www.signatureassociates.com

84 Macomb Place – Mt. Clemens, Michigan

Retail For Sale

2,660
Square Feet
AVAILABLE

Site Plan



For more information, please contact:

JOE STACK
(248) 359 0615
jstack@signatureassociates.com

CHRIS MONSOUR
(248) 948 0107
cmonsour@signatureassociates.com

SIGNATURE ASSOCIATES
One Towne Square, Suite 1200
Southfield, MI 48076
www.signatureassociates.com

Information is subject to verification and no liability for errors or omissions is assumed. Price is subject to change and listing withdrawal.