

111 WEST WASHINGTON

40' OF FRONTAGE AT BURNHAM CENTER



PROPERTY

Space fronting Washington Street in this architecturally significant 21-story, approximately 579,778 square foot office building, located on Washington across from City Hall and the Daley Center.

AVAILABLE SPACE

3,139 sf

AREA RETAIL TENANTS

Pret A Manger, Potbelly, Starbucks, Freshii, Fannie May, Jimmy John's, Ameritrade, Ann Taylor LOFT, and HALO for Men.

WEEKDAY PEDESTRIAN TRAFFIC

An estimated 25,000 pedestrians on Washington Street and an estimated 20,400 pedestrians on Clark Street south of Washington.

OFFICE POPULATION

Approximately 1,500 people office in Burnham Center, plus an additional 1,200 in the adjacent building that is connected via the pedestrian alley.

DEMOGRAPHICS

| | 1/4 MILE | 1/2 MILE | 1 MILE |
|---------------------------|-----------|-----------|-----------|
| POPULATION | 3,113 | 13,590 | 81,098 |
| HOUSEHOLDS | 1,772 | 8,419 | 52,021 |
| AVERAGE HH INCOME | \$120,898 | \$126,844 | \$138,729 |
| DAYTIME POPULATION | 128,299 | 297,480 | 526,886 |

RENT

Upon request.



40'

Washington Street frontage



3,139

Square feet fronting Washington



25k

Average daily pedestrian foot traffic on Washington



129k

Office population in a two block radius

EXCLUSIVE AGENT John Vance (jvance@stonerealestate.com, 312/782-1373) and Sarah Delisi (sdelisi@stonerealestate.com, 312/878-9446)

PROPERTY MANAGEMENT BY Sterling Bay

STONE
REAL ESTATE

111 WEST WASHINGTON

40' OF FRONTAGE AT BURNHAM CENTER

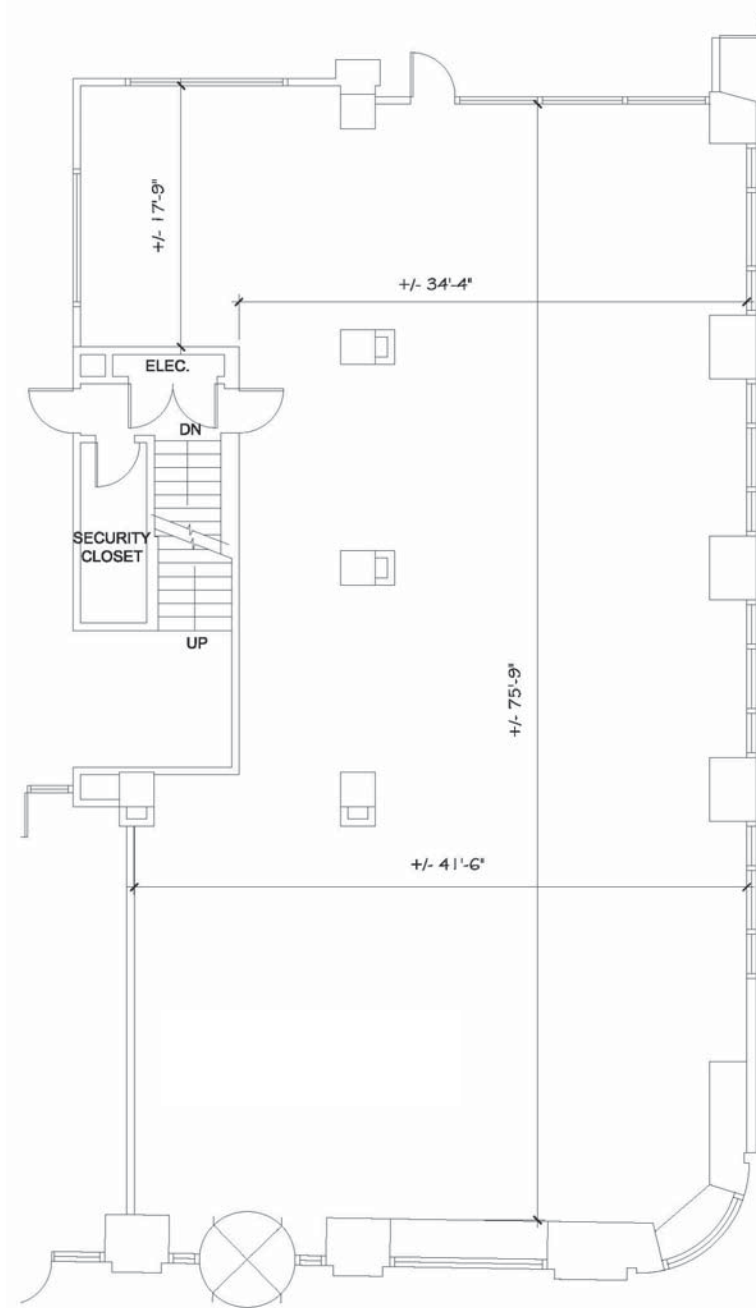


EXCLUSIVE AGENT John Vance (jvance@stonerealestate.com, 312/782-1373)
and Sarah Delisi (sdelisi@stonerealestate.com, 312/878-9446)
PROPERTY MANAGEMENT BY Sterling Bay

STONE
REAL ESTATE

111 WEST WASHINGTON

40' OF FRONTAGE AT BURNHAM CENTER



EXCLUSIVE AGENT John Vance (jvance@stonerealestate.com, 312/782-1373)
and Sarah Delisi (sdelisi@stonerealestate.com, 312/878-9446)
PROPERTY MANAGEMENT BY Sterling Bay

STONE
REAL ESTATE