

Small Commercial Building for Lease

213 48th Street
Sunset Park, Brooklyn
(Between Second & Third Avenues)



Area

Approximately 14,000 RSF

Price:

Upon Request

Possession

Arranged

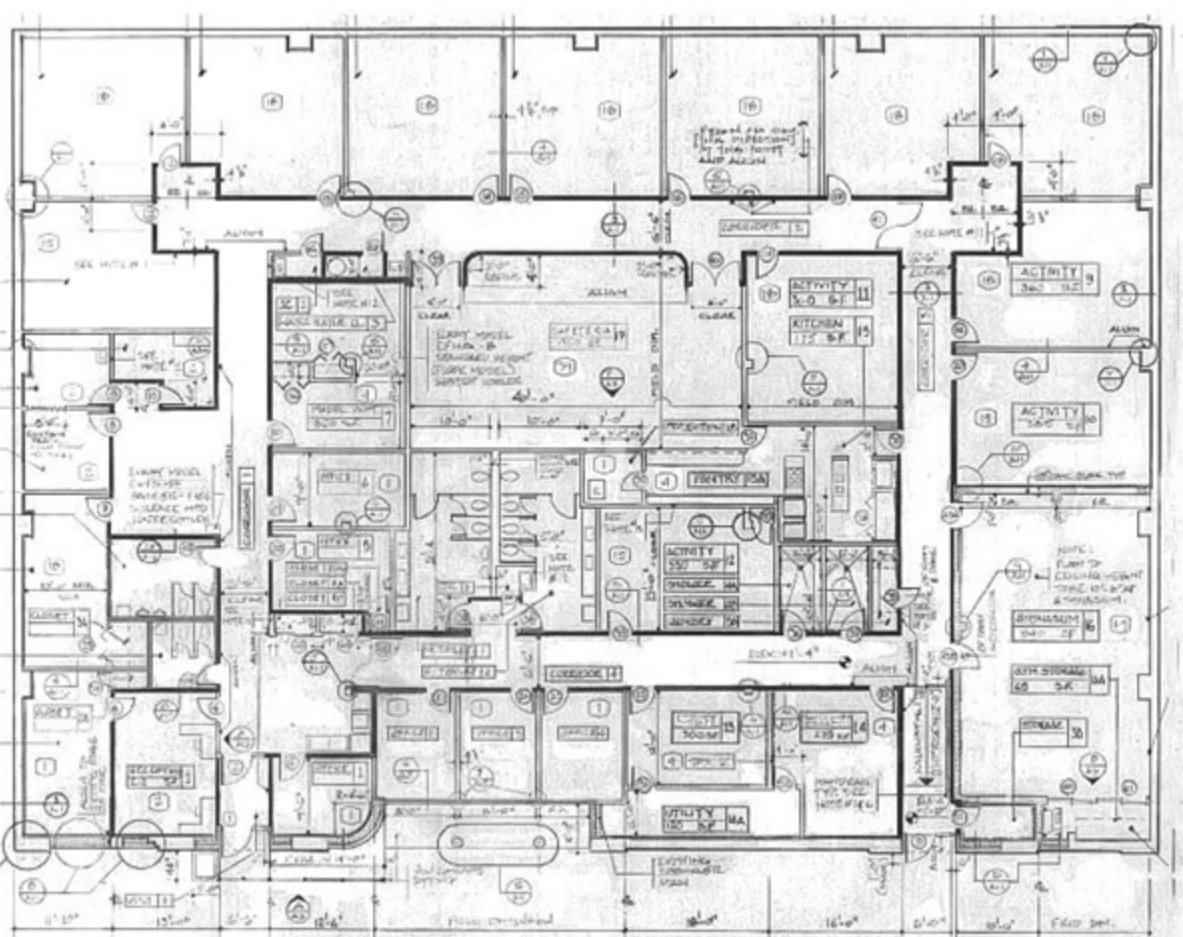
Term

Arranged

Comments

- Ideal for Office Users, Non-profits and educational Related Organizations
- Currently consists of Administrative offices, Cafeteria, Gymnasium and Activity Rooms
- For Long Term Net Lease

[DOWNLOAD BROCHURE](#)



FOR INFORMATION, PLEASE CONTACT:

Barry Goodman
Senior Managing Director
t 212-372-2243
barry.goodman@nrmk.com

125 Park Avenue
New York, NY 10017
212-372-2243

nrmk.com



125 Park Avenue, New York, NY 10017 t 212-372-2243

The information contained herein has been obtained from sources deemed reliable but has not been verified and no guarantee, warranty or representation, either express or implied, is made with respect to such information. Terms of sale or lease and availability are subject to change or withdrawal without notice.

©2022 Newmark. All Rights Reserved.