

# FOR LEASE

# CAMINO SANTA FE BUSINESS PARK

8320-8395 CAMINO SANTA FE, SAN DIEGO, CALIFORNIA 92121



**CUSHMAN &  
WAKEFIELD**

**BRANT ABERG, SIOR**

858.546.5464

[brant.aberg@cushwake.com](mailto:brant.aberg@cushwake.com)

CA Lic. 01773573

**RYAN DOWNING**

858.546.5416

[ryan.downing@cushwake.com](mailto:ryan.downing@cushwake.com)

CA Lic. 01955032

4747 Executive Drive, Suite 900, San Diego, CA 92121 / P 858.546.5400 / F 858.630.6320 / [www.cushmanwakefield.com](http://www.cushmanwakefield.com)



# FOR LEASE

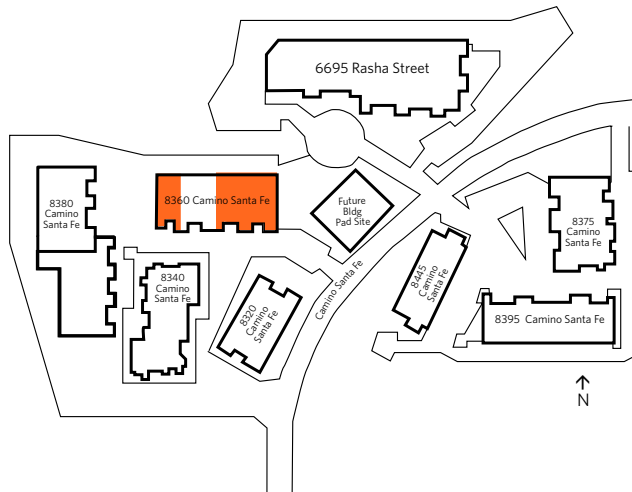
# CAMINO SANTA FE BUSINESS PARK

8320-8395 CAMINO SANTA FE, SAN DIEGO, CALIFORNIA 92121

## PROJECT FEATURES:

- WESTERN MIRAMAR LOCATION
- IDEAL FOR OFFICE/LIGHT MANUFACTURING/ WAREHOUSE/R&D USES
- DOCK AND GRADE LEVEL LOADING DOORS
- APPROXIMATELY 16'-22' WAREHOUSE CLEARANCE
- SPRINKLERED
- 5 MINUTES TO I-805 AND UTC AREA

AVAILABILITY	SF	LEASE RATE	COMMENTS
8360 Camino Santa Fe, Suite A	3,887	\$1.50 Industrial Gross	30% office, 70% warehouse. 2 grade level doors. Available January 2021.
8360 Camino Santa Fe, Suite F	10,234	\$1.40 Industrial Gross	35% office, 65% warehouse. 5 grade level doors. <a href="#">CLICK HERE TO TOUR THE SPACE</a>



**BRANT ABERG, SIOR**

**RYAN DOWNING**

858.546.5464

858.546.5416

brant.aberg@cushwake.com

ryan.downing@cushwake.com

CA Lic. 01773573

CA Lic. 01955032

4747 Executive Drive, Suite 900, San Diego, CA 92121 / P 858.546.5400 / F 858.630.6320 / www.cushmanwakefield.com



# FOR LEASE

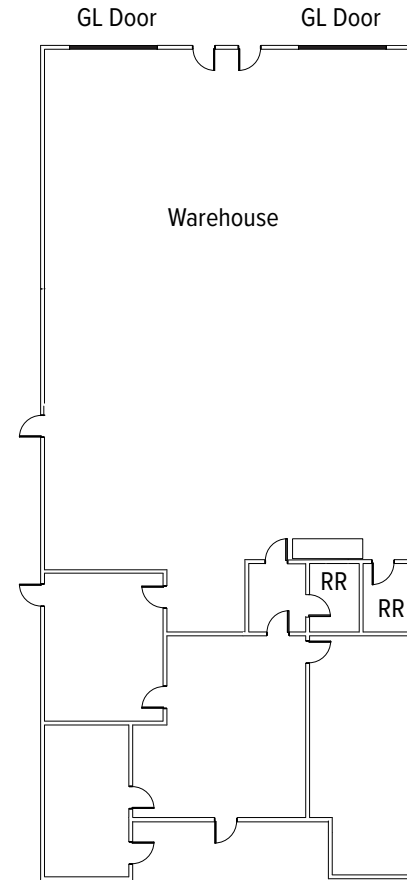
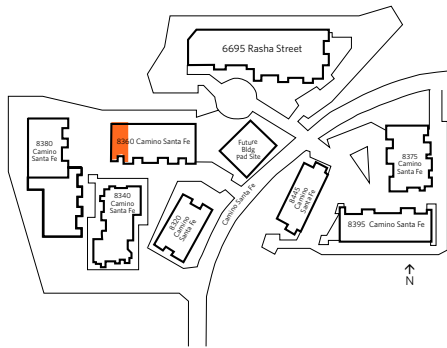
# CAMINO SANTA FE BUSINESS PARK

8320-8395 CAMINO SANTA FE, SAN DIEGO, CALIFORNIA 92121

## FLOOR PLAN

### 8360 CAMINO SANTA FE, SUITE A 3,887 SF

- 30% OFFICE, BALANCE WAREHOUSE
- TWO (2) GRADE LEVEL LOADING DOORS
- AVAILABLE JANUARY 2021
- \$1.50 INDUSTRIAL GROSS



**BRANT ABERG, SIOR**

858.546.5464

[brant.aberg@cushwake.com](mailto:brant.aberg@cushwake.com)

CA Lic. 01773573

**RYAN DOWNING**

858.546.5416

[ryan.downing@cushwake.com](mailto:ryan.downing@cushwake.com)

CA Lic. 01955032

4747 Executive Drive, Suite 900, San Diego, CA 92121 / P 858.546.5400 / F 858.630.6320 / [www.cushmanwakefield.com](http://www.cushmanwakefield.com)



# FOR LEASE

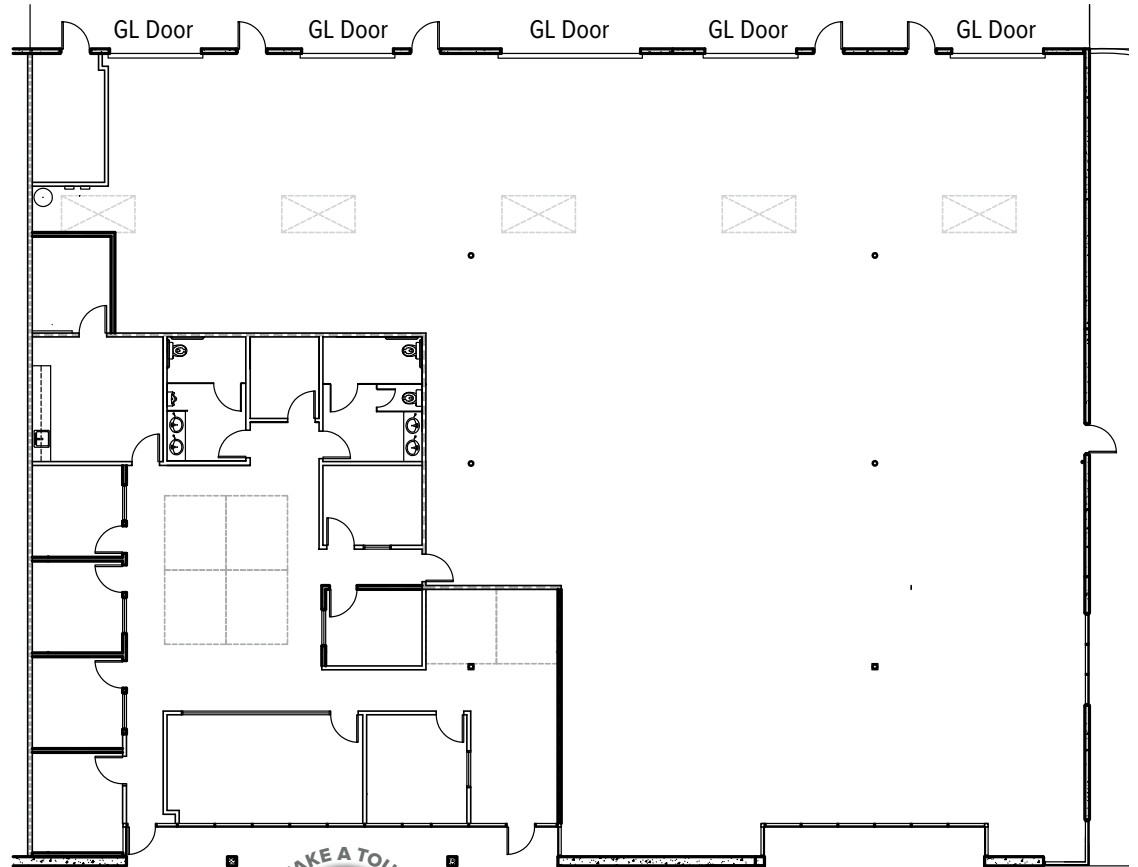
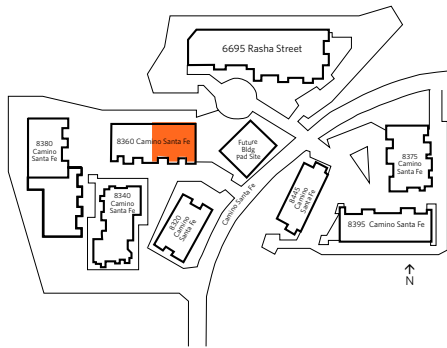
# CAMINO SANTA FE BUSINESS PARK

8320-8395 CAMINO SANTA FE, SAN DIEGO, CALIFORNIA 92121

## FLOOR PLAN

**8360 CAMINO SANTA FE, SUITE F**  
**10,234 SF**

- 35% OFFICE, BALANCE WAREHOUSE
- FIVE (5) GRADE LEVEL LOADING DOORS
- \$1.40 INDUSTRIAL GROSS



**BRANT ABERG, SIOR**

858.546.5464

[brant.aberg@cushwake.com](mailto:brant.aberg@cushwake.com)

CA Lic. 01773573

**RYAN DOWNING**

858.546.5416

[ryan.downing@cushwake.com](mailto:ryan.downing@cushwake.com)

CA Lic. 01955032

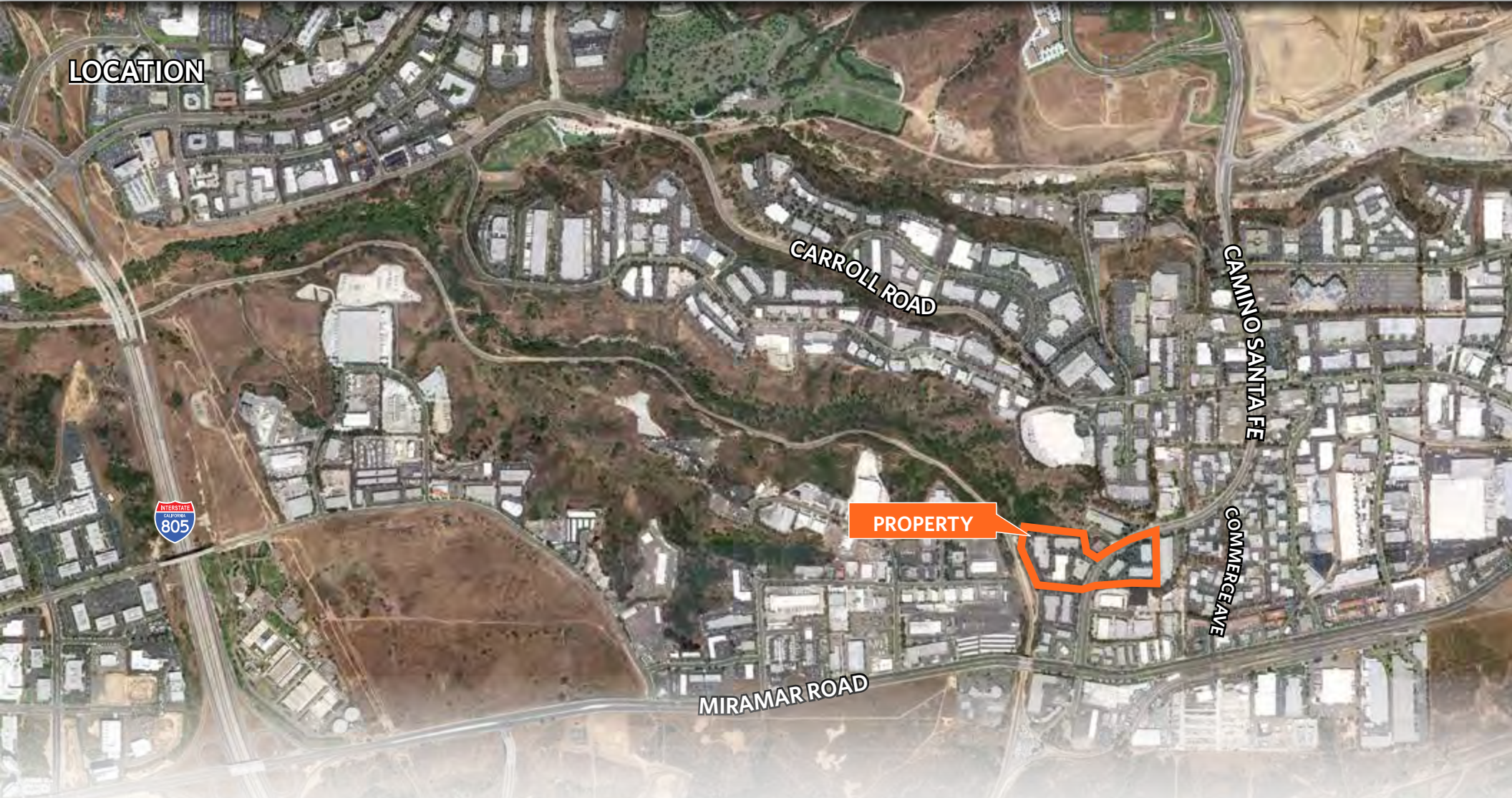
4747 Executive Drive, Suite 900, San Diego, CA 92121 / P 858.546.5400 / F 858.630.6320 / [www.cushmanwakefield.com](http://www.cushmanwakefield.com)



# FOR LEASE

# CAMINO SANTA FE BUSINESS PARK

8320-8395 CAMINO SANTA FE, SAN DIEGO, CALIFORNIA 92121



**BRANT ABERG, SIOR**

858.546.5464

[brant.aberg@cushwake.com](mailto:brant.aberg@cushwake.com)

CA Lic. 01773573

**RYAN DOWNING**

858.546.5416

[ryan.downing@cushwake.com](mailto:ryan.downing@cushwake.com)

CA Lic. 01955032

4747 Executive Drive, Suite 900, San Diego, CA 92121 / P 858.546.5400 / F 858.630.6320 / [www.cushmanwakefield.com](http://www.cushmanwakefield.com)

