

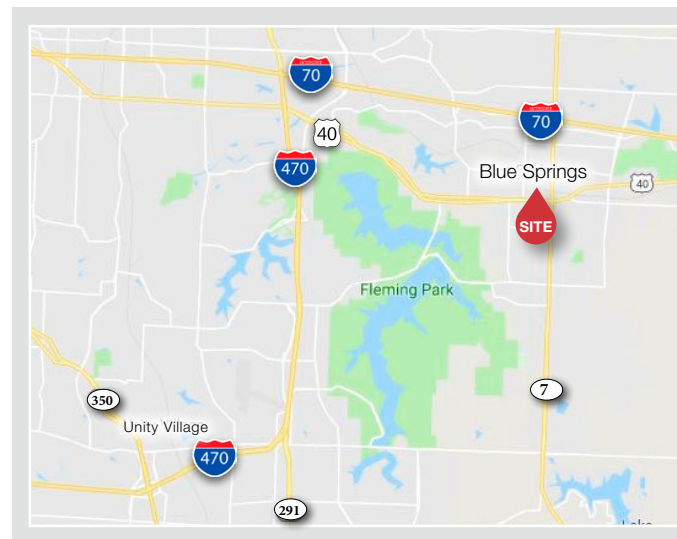


## 705 S 10th Street

Blue Springs, Missouri

### Property Features

- ±38,000 SF Warehouse
  - ±960 SF Office
- Expandable to ±76,000 SF under roof
- Outside storage area available
- 17'-25' clear ceilings
- Four (4) Dock-high doors - 3 levelers
- One (1) Drive-in door
- 480v 3-phase power
- Wet Sprinkler system
- Lease Rate: \$3.65 PSF industrial gross



For more information:

**Joe O'Neill**

+1 913 890 2010

joe@nai-heartland.com

**Nathan Anderson, SIOR, CCIM**

+1 913 890 2001

nathan@nai-heartland.com

# Available For Lease ±38,000 SF Warehouse



For more information:

**Joe O'Neill**

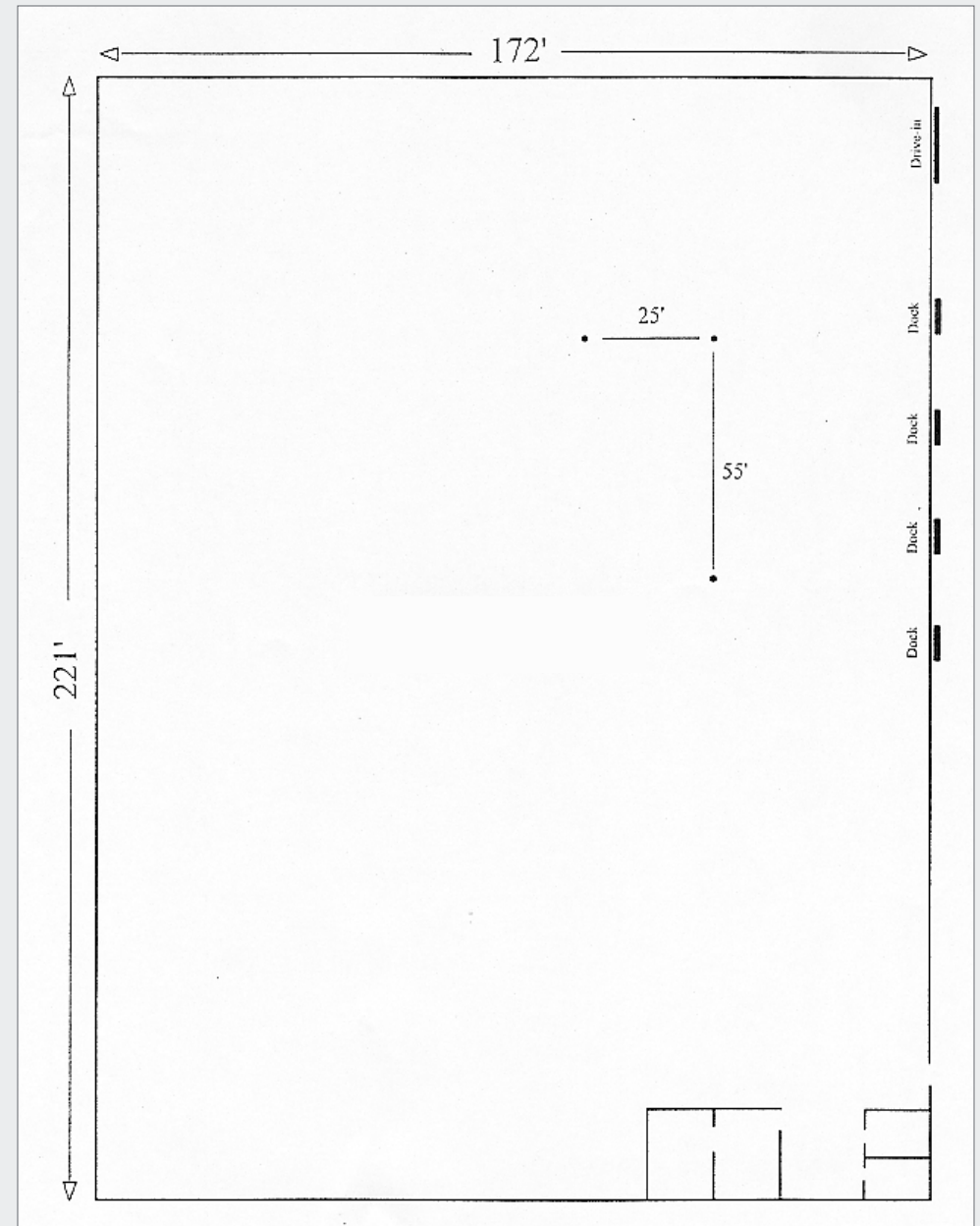
+1 913 890 2010

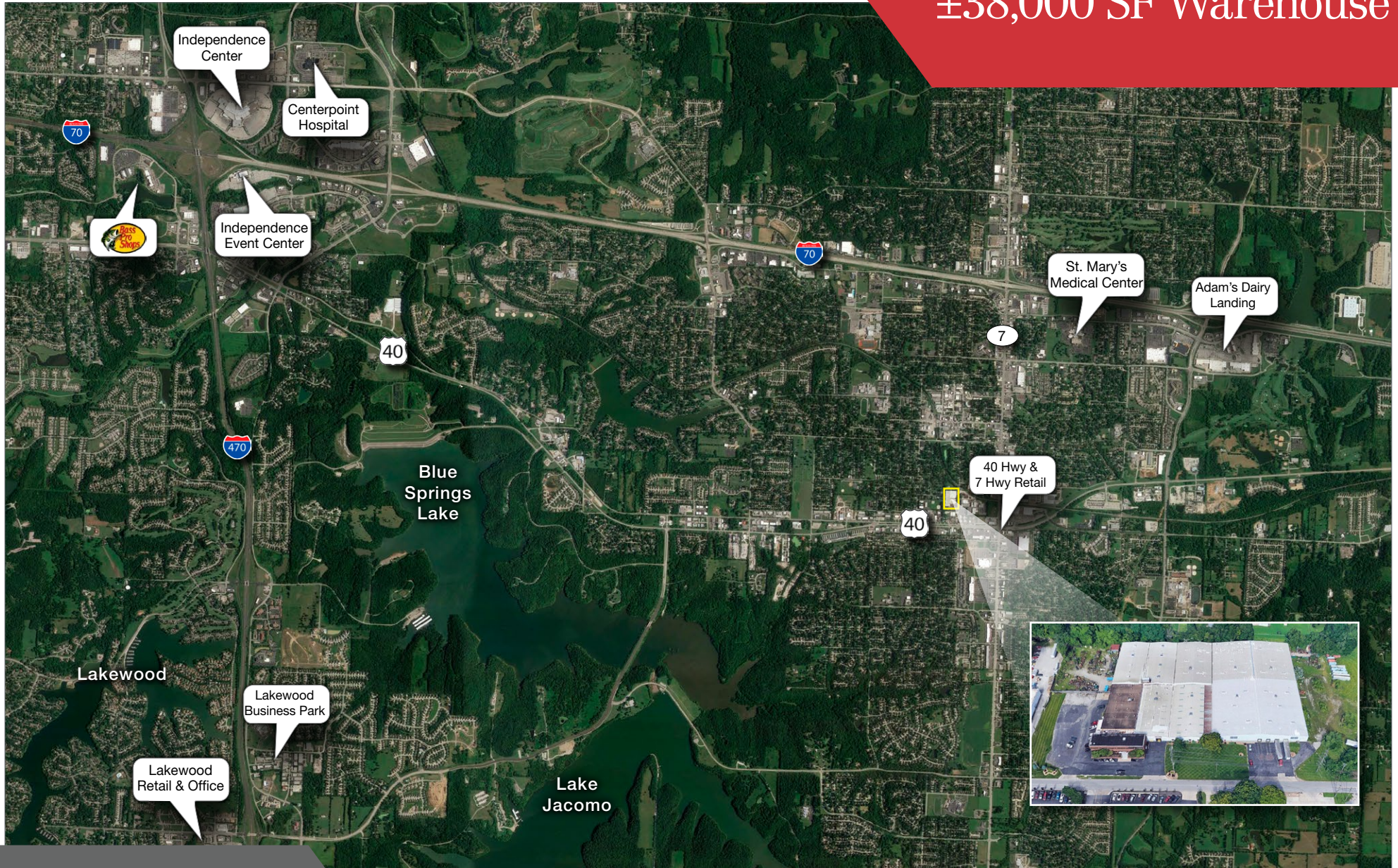
joe@nai-heartland.com

**Nathan Anderson, SIOR, CCIM**

+1 913 890 2001

nathan@nai-heartland.com





4400 College Boulevard Suite 170  
Overland Park, Kansas 66211  
+1 913 362 1000  
nai-heartland.com

For more information:

**Joe O'Neill**  
+1 913 890 2010  
joe@nai-heartland.com

**Nathan Anderson, SIOR, CCIM**  
+1 913 890 2001  
nathan@nai-heartland.com