

**±100 Acre Family Retreat**  
**Sale Price: \$980,000**

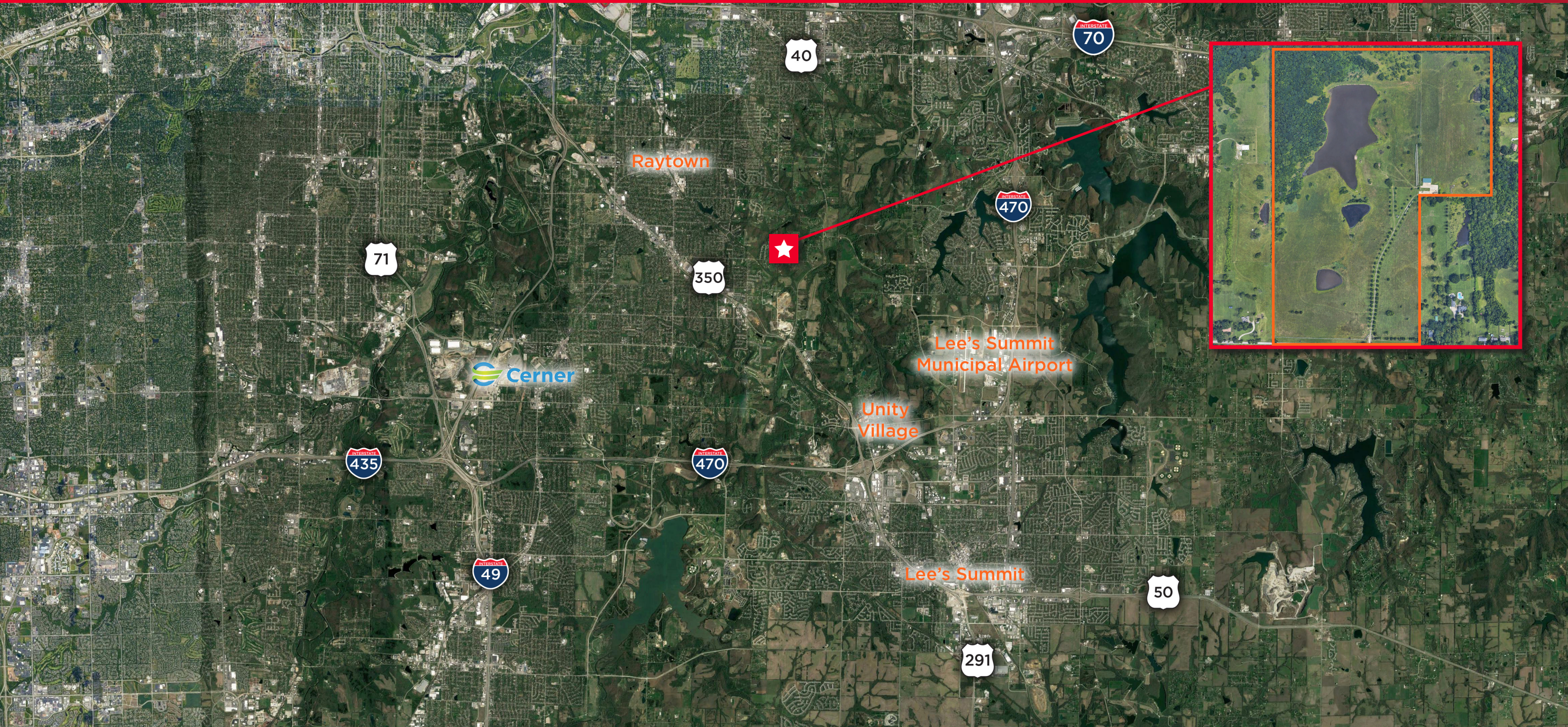
**Property Highlights**

- 10 acre fully stocked lake
- Gated entry with white metal fence
- 1,500' tree lined driveway
- ±3,000 SF metal building with drive-in doors and concrete pad
- Zoned AG
- Very private, yet accessible to all Kansas City amenities

**Craig Kelly, SIOR**  
Director  
+1 816 412 0279  
craig.kelly@cushwake.com

**Jeffrey Bentz**  
Senior Associate  
+1 816 412 0281  
jeffrey.bentz@cushwake.com

4600 Madison Avenue, Suite 800  
Kansas City, MO 64112  
Main +1 816 221 2200  
Fax +1 816 842 2798  
**cushmanwakefield.com**



**Craig Kelly, SIOR**  
Director  
+1 816 412 0279  
craig.kelly@cushwake.com

**Jeffrey Bentz**  
Senior Associate  
+1 816 412 0281  
jeffrey.bentz@cushwake.com

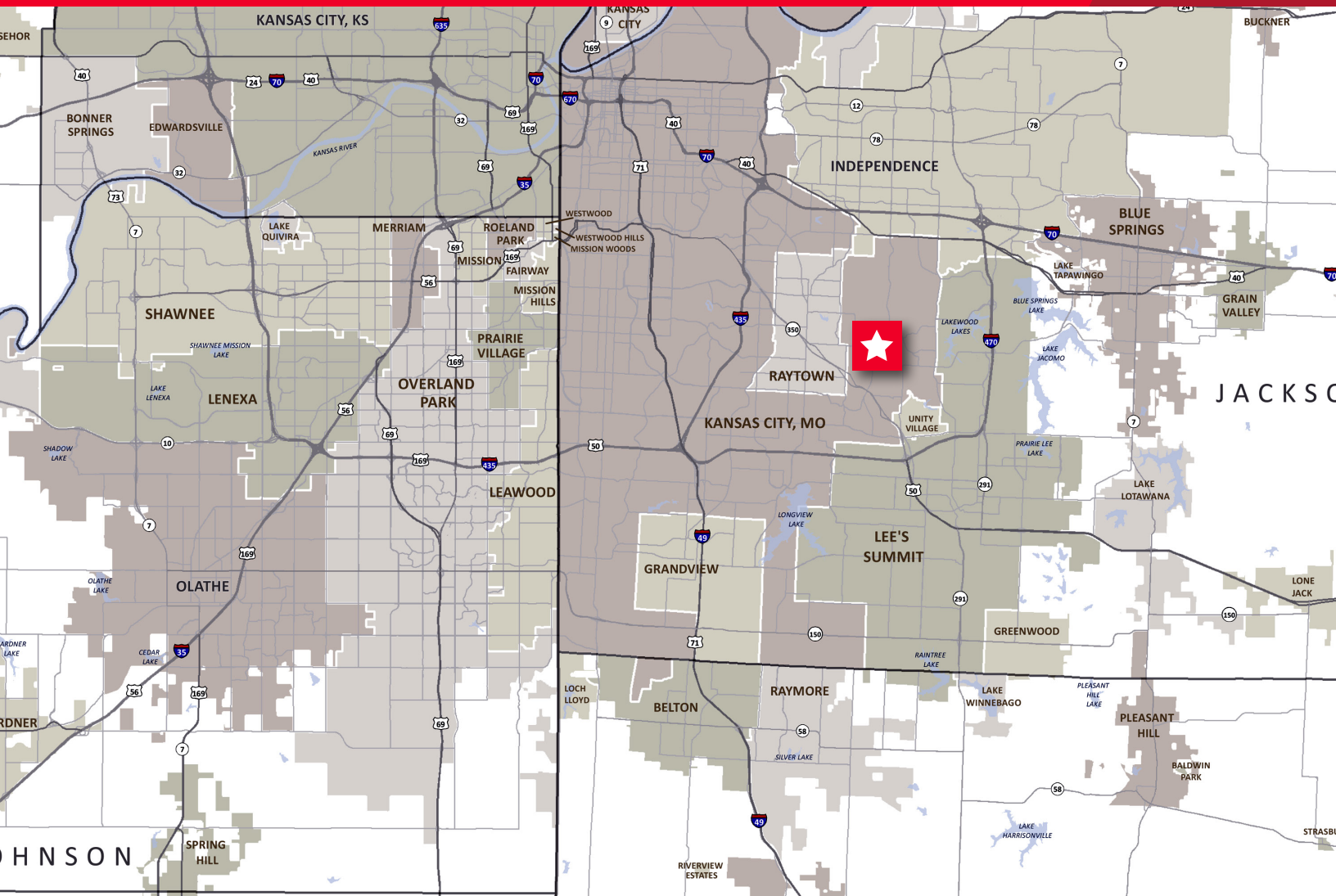
4600 Madison Avenue, Suite 800  
Kansas City, MO 64112  
Main +1 816 221 2200  
Fax +1 816 842 2798  
**cushmanwakefield.com**



FOR SALE

12640 E 75th Street

Jackson County, Kansas City, MO



### Demographics

	1 Mile	3 Miles	5 Miles
Population	3,683	41,322	122,984
AVG. HH Income	\$84,122	\$71,636	\$74,838

**Craig Kelly, SIOR**  
 Director  
 +1 816 412 0279  
 craig.kelly@cushwake.com

**Jeffrey Bentz**  
 Senior Associate  
 +1 816 412 0281  
 jeffrey.bentz@cushwake.com

4600 Madison Avenue, Suite 800  
 Kansas City, MO 64112  
 Main +1 816 221 2200  
 Fax +1 816 842 2798  
[cushmanwakefield.com](http://cushmanwakefield.com)