



1100

MASSACHUSETTS AVENUE
CAMBRIDGE, MASSACHUSETTS

FOR LEASE TOP TWO FLOORS
20,194 RSF AVAILABLE

DYNAMIC
HARVARD
SQUARE
LOCATION

PROPERTY OVERVIEW

On behalf of Bentall Kennedy, CBRE/New England is pleased to announce the availability of two floors at 1100 Massachusetts Avenue in Cambridge, MA. This 46,094 RSF, first class building is immediately adjacent to Harvard Square and Harvard University, providing tenants with a strong identity in a vibrant location.

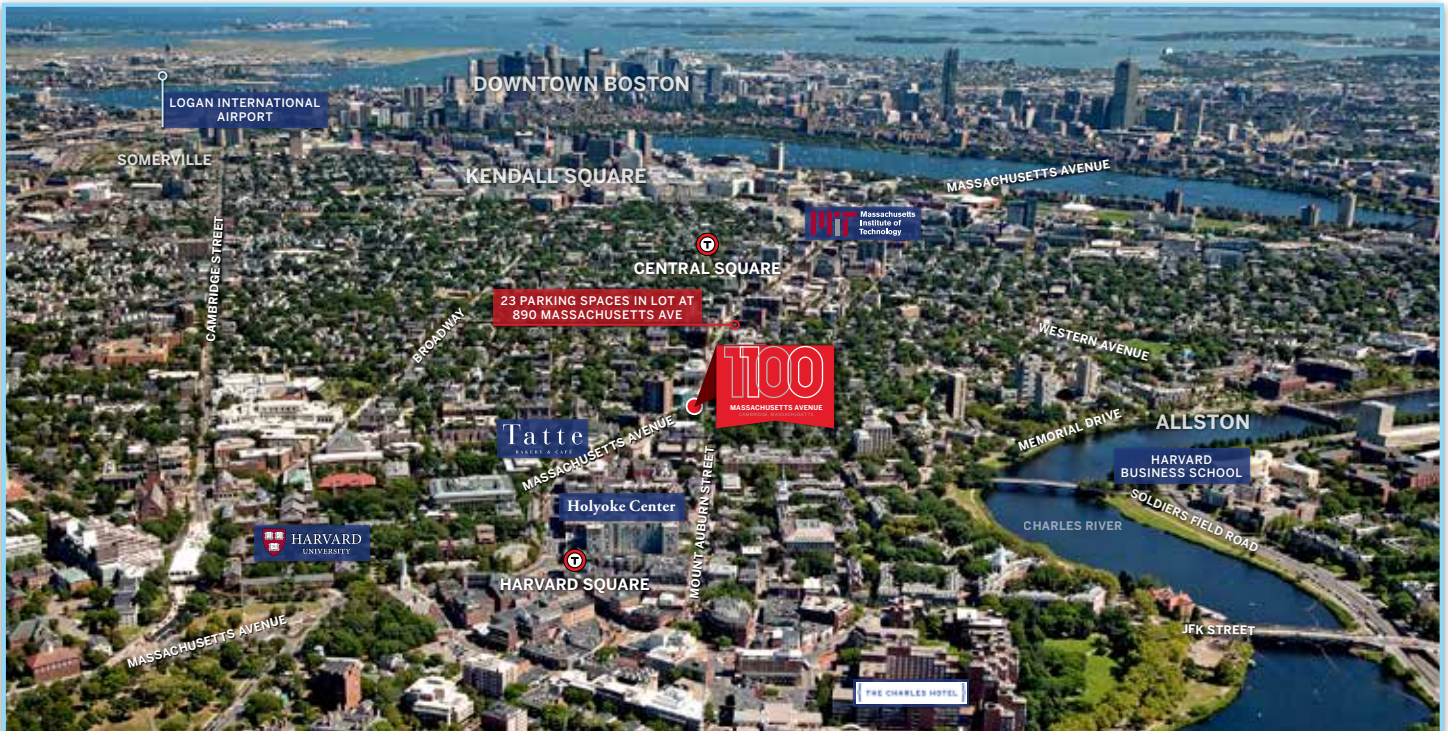
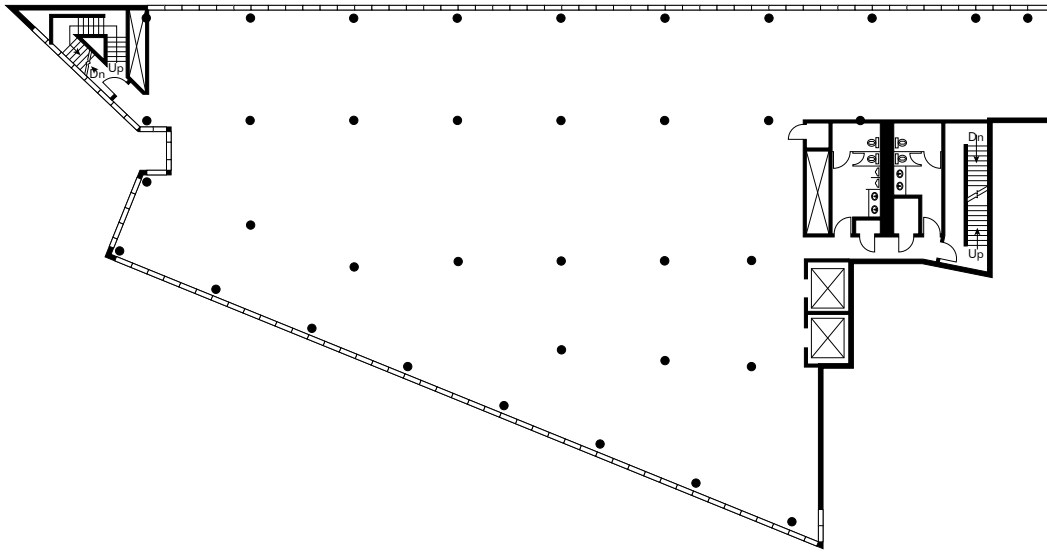
AVAILABILITY

- 10,097 RSF on 4th floor
- 10,097 RSF on 5th floor
- Both floors available within 90 days

ACCESS & AMENITIES

- Transit-oriented location providing easy access to Harvard and Central MBTA Red Line Stations
- Garage parking
- Proximity to numerous restaurants and retail amenities

4TH FLOOR PLAN



CONTACT

CHARLES KAVOOGIAN
Senior Vice President/Partner
+1 617 912 7079
charles.kavoogian@cbre-ne.com

ADAM BRINCH
Senior Vice President/Partner
+1 617 912 6997
adam.brinch@cbre-ne.com

CAROLYN WHEATLEY
Associate
+1 617 912 6999
carolyn.wheatley@cbre-ne.com