

For Sale/Lease

Property Description

The Campion Lafayette apartment development will be a best-in-class product catering to University of Louisiana students based on a successful concept previously executed at major universities across the country. This new residential product allows for a retail component to be developed in conjunction. The businesses operating out of the small-shop building will cater to the 194 apartment units (600 beds), as well as the existing business community that engulfs the site.

The project is in the heart of Lafayette's Central Business District, which has thriving day-time commerce, yet remains quite active in the evening hours. Successful restaurants, both family dining & fast food, occupy this corridor; these include but are not limited to Chili's Grill & Bar, Outback Steakhouse & Raising Cane's, all of which are within a quarter mile of the site.

The Lafayette General Medical complex is a block away with many peripheral doctors' offices nearby. Another indicator of the strength of this sub market of Lafayette is the hotel growth in the immediate area, as there are approximately 1,702 rooms in a one-mile radius, substantially more than any other sub market of Lafayette.

Available

- 2,400 SF Endcap
- 1,100 SF
- 1,100 SF
- 1,400 SF Endcap

Traffic Count (ADT 2016)

- West Pinhook Rd: 54,168



Campion Lafayette Outparcel

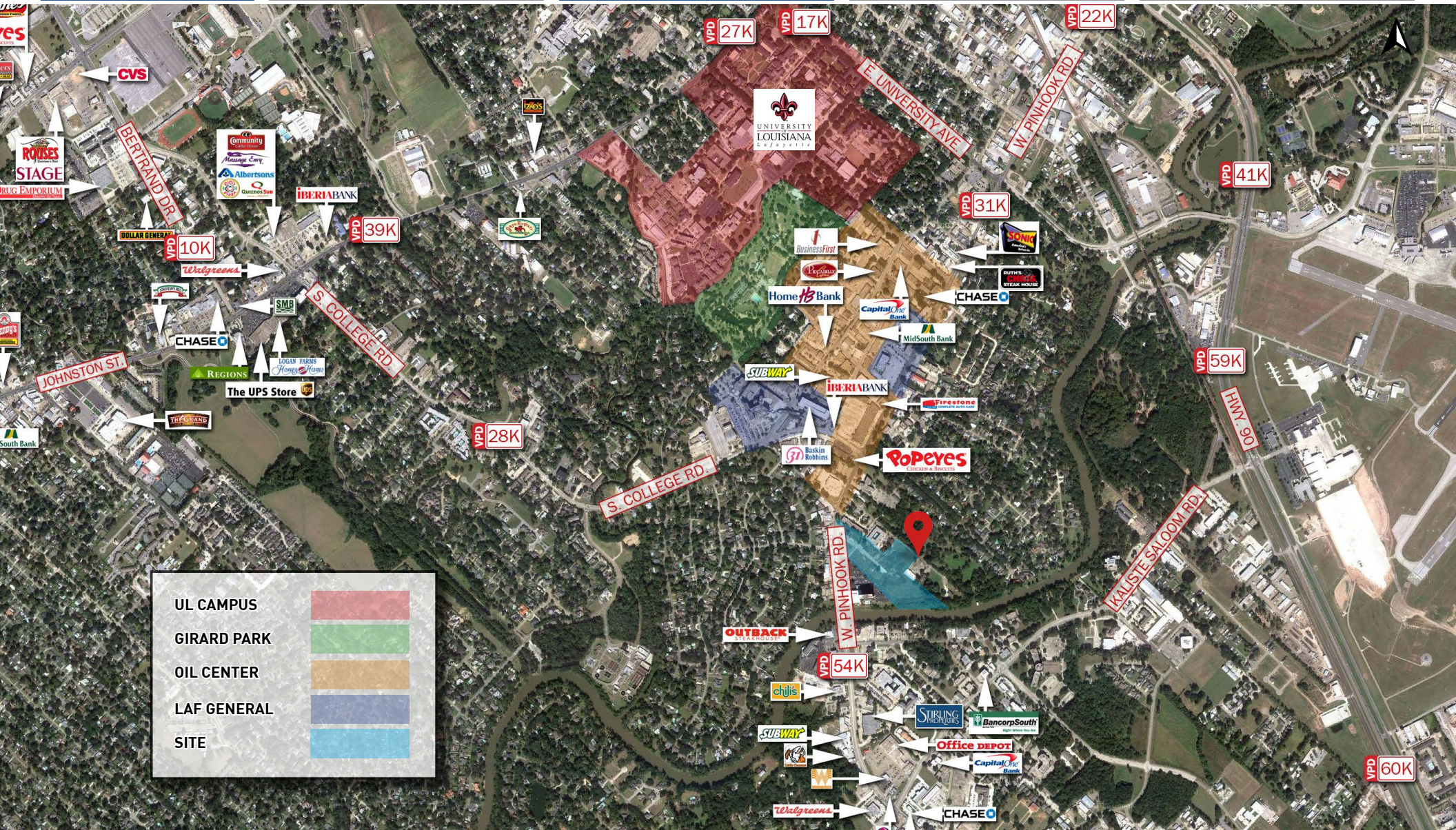
1500 West Pinhook Road, Lafayette, LA

Overview

Aerial

Site Plan

Demographics



UL CAMPUS	
GIRARD PARK	
OIL CENTER	
LAF GENERAL	
SITE	

Campion Lafayette Outparcel

1500 West Pinhook Road, Lafayette, LA

Overview

Aerial

Site Plan

Demographics



1500 PINHOOK APARTMENTS

Campion Lafayette Outparcel

1500 West Pinhook Road, Lafayette, LA

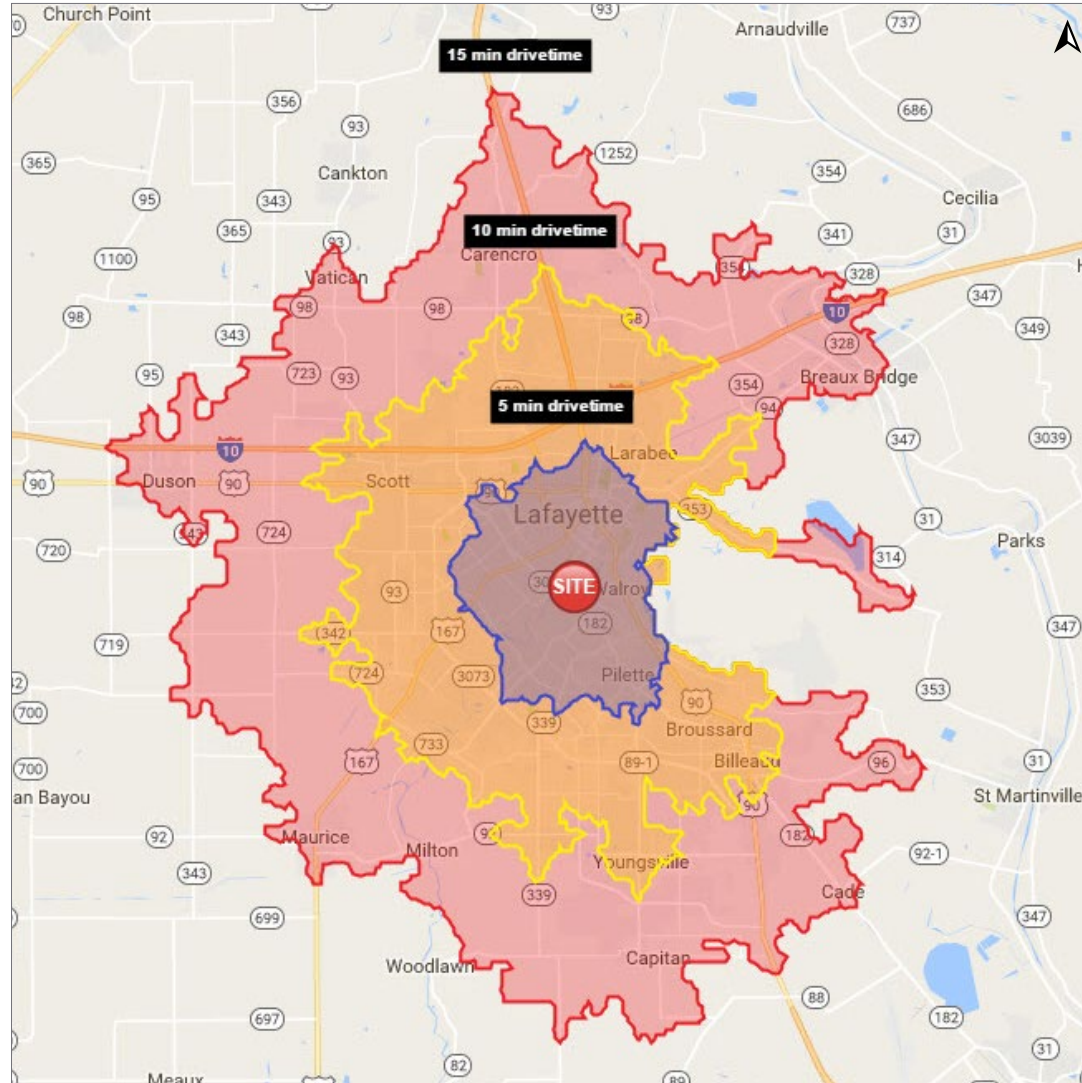
Overview

Aerial

Site Plan

Demographics

Drive Time Map



2017 Drive Time	5 min.	10 min.	15 min.
Population	71,972	182,351	254,858
Households	31,426	74,883	101,916
Avg. HH Income	\$74,751	\$78,468	\$79,904

2017 Mile Radius	1 mi.	3 mi.	5 mi.
Population	5,654	70,186	141,131
Households	2,207	60,606	59,051
Avg. HH Income	\$100,961	\$75,734	\$76,425