

FOR LEASE



CASCADE PARK OFFICE/MEDICAL SPACE

**LOCATION:**

12214 SE Mill Plain Blvd., Vancouver, WA 98684

AVAILABILITY:

928 RSF

LEASE RATE:

\$17.50/SF per year; Modified Gross (excludes janitorial)

PARKING RATIO:

4.0 / 1,000 SF

SIGNAGE:

Building and monument signage available directly on SE Mill Plain Blvd.

For more info Contact:

Adam Roselli | 360.597.0568
aroselli@ef-inc.com

Deborah Ewing | 360.597.0566
dewing@ef-inc.com



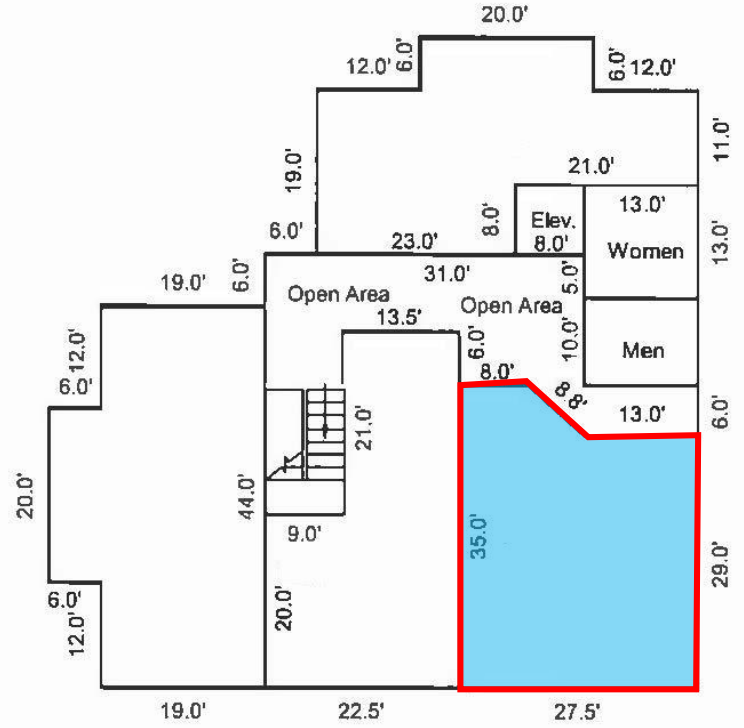
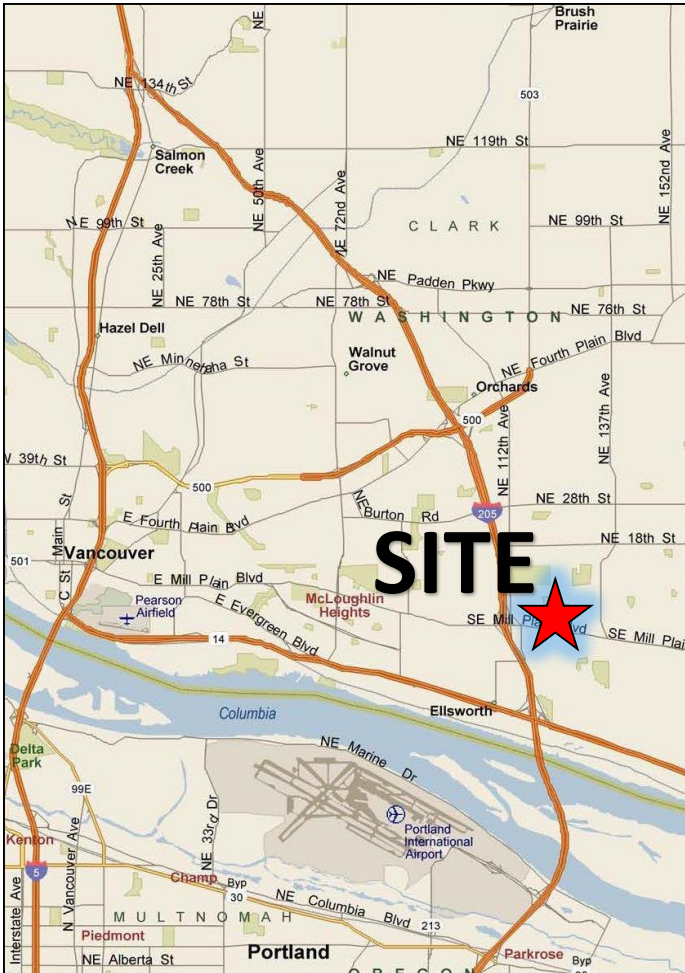
900 Washington Street, Suite 850
Vancouver, WA 98660
360-750-5595

www.ericfullerinc.com

This statement with the information it contains is given with the understanding that all the negotiations relating to the purchase, rental or leasing of the property described above shall be conducted through this office. The above information, while not guaranteed, has been secured from sources we believe to be reliable.

CASCADE PARK OFFICE/MEDICAL SPACE

VANCOUVER, WASHINGTON



Nearby Businesses Include:

