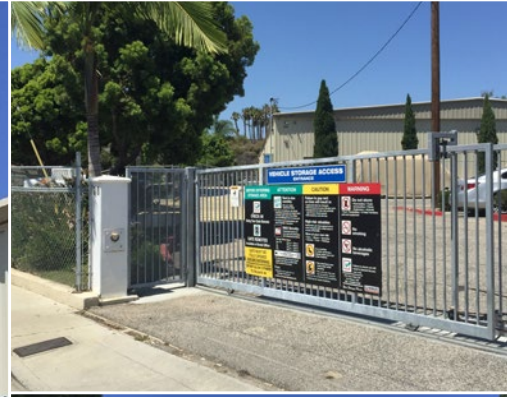


# available for lease

108 calle lago, san clemente, ca



## PROPERTY FEATURES

- APPROXIMATELY 16,830 (90' X 187') SF METAL BUILDING
- APPROXIMATELY 63,432 SF PARCEL
- 43 PARKING STALLS
- FENCED CONCRETE YARD AREA
- METAL HALIDE LIGHTING
- FIRE SPRINKLERED
- WALKING DISTANCE TO BEACH, SAN CLEMENTE METROLINK STATION, RETAIL AND OTHER AMENITIES
- CLOSE PROXIMITY TO SAN DIEGO (5) FREEWAY

For more information, please contact:

**DAVID BOLT**

☎: 949.724.4715

✉: [dbolt@lee-associates.com](mailto:dbolt@lee-associates.com)

BRE #: 01169899

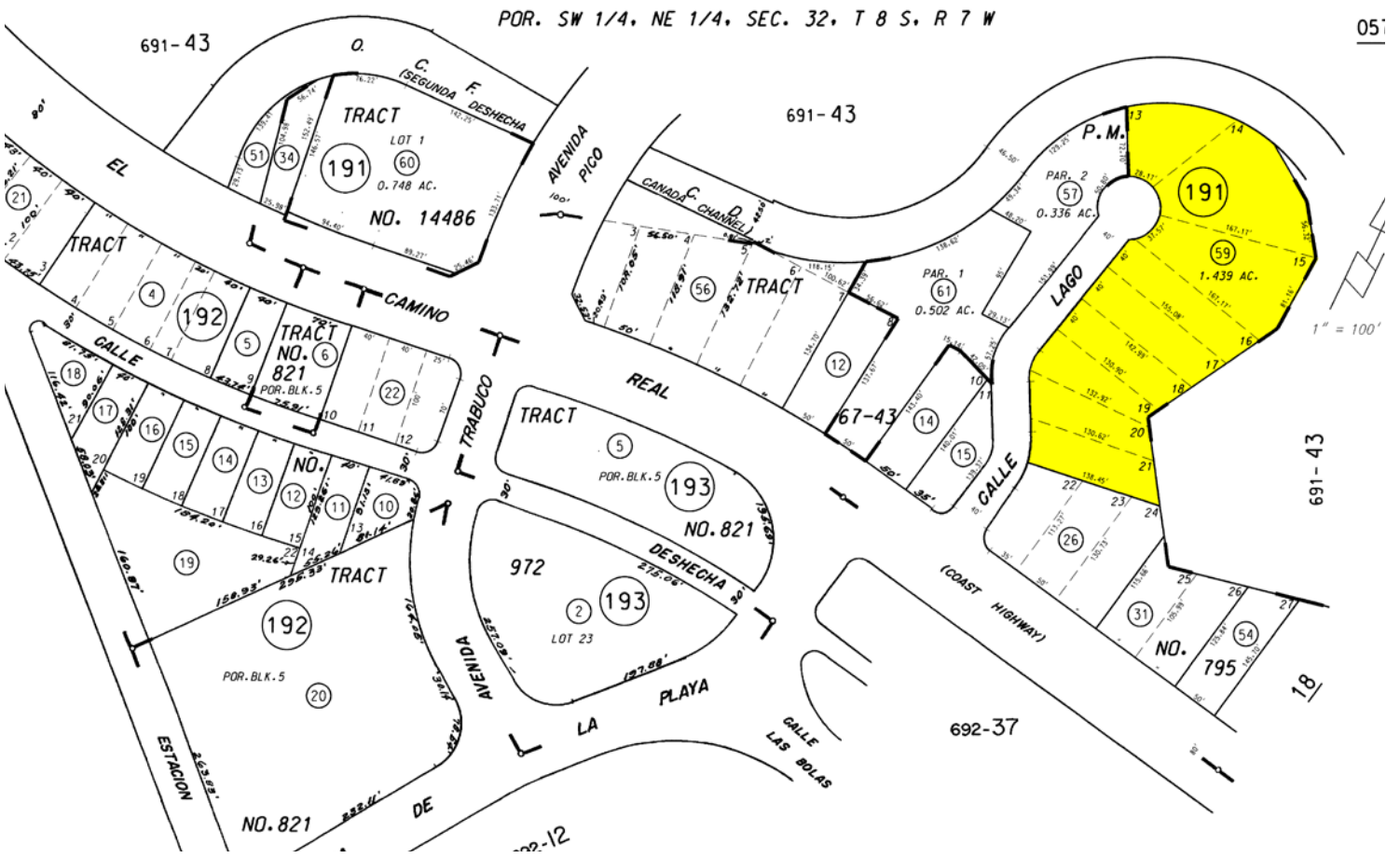


**LEE & ASSOCIATES® - NEWPORT BEACH** | Corporate ID#01197433  
100 Bayview Circle, Suite 600, Newport Beach, California 92660  
☎ 949.724.1000 | ☎ 949.862.9048 | [www.lee-associates.com](http://www.lee-associates.com)

**DISCLAIMER:** The information contained herein has been obtained from the property owner or other third party and is provided to you without verification as to accuracy. We (Lee & Associates, its brokers, employees, agents, principals, officers, directors and affiliates) make no warranty or representation regarding the information, property, or transaction. You and your attorneys, advisors and consultants should conduct your own investigation of the property and transaction.

# available for lease

108 calle lago, san clemente, ca



For more information, please contact:

**DAVID BOLT**

☎: 949.724.4715

✉: [dbolt@lee-associates.com](mailto:dbolt@lee-associates.com)

BRE #: 01169899



**LEE & ASSOCIATES® - NEWPORT BEACH** | Corporate ID#01197433  
100 Bayview Circle, Suite 600, Newport Beach, California 92660  
☎ 949.724.1000 | 📠 949.862.9048 | [www.lee-associates.com](http://www.lee-associates.com)

**DISCLAIMER:** The information contained herein has been obtained from the property owner or other third party and is provided to you without verification as to accuracy. We (Lee & Associates, its brokers, employees, agents, principals, officers, directors and affiliates) make no warranty or representation regarding the information, property, or transaction. You and your attorneys, advisors and consultants should conduct your own investigation of the property and transaction.